



GS DIAMANT

tool-sized quality



Scansiona il **QRCode** o
visita il nostro sito
gsdiament.com

*Scan the **QRCode** or
visit our site
gsdiament.com*



Frese <i>Routers</i>	07
Foretti <i>Drills</i>	31
Mole <i>Wheels</i>	45
CNC <i>CNC</i>	63
Utensili Macchine Manuali <i>Hand Machine Tools</i>	169
Dischi <i>Blade</i>	183
Coni e Prolunghe <i>Cones and Extensions</i>	195
Lucidatura <i>Polishing</i>	205
Fili <i>Wires</i>	211
Accessori e Servizi <i>Accessories and services</i>	215
Termini e Condizioni <i>Terms and Conditions</i>	219

GR Granito
Granite

MR Marmo
Marble

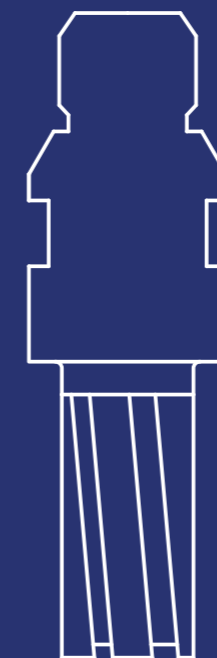
S Arenaria
Sandstone

Q Quarzo Naturale
Natural Quartz

MT Materiali Tecnici
Technical Materials

K Ceramica
Ceramic

V Vetro - Stoneglass
Glass - Stoneglass



1 / FRESE

Frese e testine intercambiabili utilizzate per il taglio, ribasso e la finitura su diversi materiali come: granito, marmo, materiali tecnici, ceramica, quarziti e materiali molto duri.

ROUTERS

Routers and changeable heads used to cut, recess and finishing on different kind of materials like : granite, marble, technical materials, quartzite and very hard materials.

1.1



SINTERIZZATO
SINTERED


GR FRESA BLU Z5 / *BLUE FINGER BIT Z5*

CODE	DIMENSIONS	PARAMETERS
FCB2035Z5	Ø20 h35 Z5	RPM 4500-5200 Feed 250-500mm/min
FCB2045Z5	Ø20 h45 Z5	
FCB2055Z5	Ø20 h55 Z5	


GR FRESA THUNDER AZZURRA Z5 / *THUNDER LIGHT BLUE FINGER BIT Z5*

CODE	DIMENSIONS	PARAMETERS
FCT2035Z5	Ø20 h35 Z5	RPM 4500-5200 Feed 250-500mm/min
FCT2045Z5	Ø20 h45 Z5	
FCT2055Z5	Ø20 h55 Z5	


GR FRESA ORO (TURBO) Z8 / *GOLD (TURBO) FINGER BIT Z8*

CODE	DIMENSIONS	PARAMETERS
FC02035Z8	Ø20 h35 Z5	RPM 4500-5600 Feed 350-800mm/min
FC02045Z8	Ø20 h45 Z5	


S FRESA VIOLA Z6 / *PURPLE FINGER BIT Z6*

CODE	DIMENSIONS	PARAMETERS
FCP2335Z6	Ø23 h35 Z6	RPM 4500-5200 Feed 250-500mm/min
FCP2345Z6	Ø23 h45 Z6	
FCP2355Z6	Ø23 h55 Z6	


Q FRESA NERA Z6 / *BLACK FINGER BIT Z6*

CODE	DIMENSIONS	PARAMETERS
FCN2335Z6	Ø23 h35 Z6	RPM 4500-5200 Feed 250-500mm/min
FCN2345Z6	Ø23 h45 Z6	


MT FRESA GIALLA Z8 / *YELLOW FINGER BIT Z8*

CODE	DIMENSIONS	PARAMETERS
FCY2535Z8	Ø25 h35 Z8	RPM 4500-5200 Feed 250-500mm/min


MT FRESA EVO Z8 / *EVO FINGER BIT Z8*

CODE	DIMENSIONS	PARAMETERS
FCL2535Z8	Ø25 h35 Z8	RPM 4500-5200 Feed 250-500mm/min


K FRESA ARANCIO Z8 / *ORANGE FINGER BIT Z8*

CODE	DIMENSIONS	PARAMETERS
FCA2535Z8	Ø25 h35 Z8	RPM 4500-5200 Feed 250-500mm/min


V FRESA VERDE Z8 / GREEN FINGER BIT Z6

CODE	DIMENSIONS	PARAMETERS
FCV2040Z8	Ø20 h40 Z8	RPM 5200-5500 Feed 200-300mm/min


GR TESTINA TAGLI INCREMENTALI / STEP CUT BIT

CODE	DIMENSIONS	PARAMETERS
FTI1415M8	Ø14 h15 M8	RPM 4500-5200 Feed 750-1800mm/min Max removal 2mm
FTI1615M10	Ø16 h15 M10	
FTI2015M12	Ø20 h15 M12	
FTI2515M14	Ø25 h15 M14	
FTI3015M14	Ø30 h15 M14	


GR TESTINA TAGLI INCREMENTALI "PREMIUM" / "PREMIUM" STEP CUT BIT

CODE	DIMENSIONS	PARAMETERS
FTP2020M12	Ø20 h20 M12	RPM 4500-5200 Feed 750-1800mm/min Max removal 2mm


MT TESTINA TAGLI INCREMENTALI GIALLA / YELLOW STEP CUT BIT

CODE	DIMENSIONS	PARAMETERS
FTY1415M8	Ø14 h15 M8	RPM 4500-5200 Feed 750-1800mm/min Max removal 2mm
FTY1615M10	Ø16 h15 M10	
FTY2015M12	Ø20 h15 M12	


MT TESTINA TAGLI INCREMENTALI "PREMIUM" GIALLA / YELLOW "PREMIUM" STEP CUT BIT

CODE	DIMENSIONS	PARAMETERS
FTPY2015M12	Ø20 h20 M12	RPM 4500-5200 Feed 750-1800mm/min Max removal 2mm


K TESTINA TAGLI INCREMENTALI ARANCIONE / ORANGE STEP CUT BIT

CODE	DIMENSIONS	PARAMETERS
FTA1415M8	Ø14 h15 M8	RPM 4500-5200 Feed 750-1800mm/min Max removal 2mm
FTA1615M10	Ø16 h15 M10	
FTA2015M12	Ø20 h15 M12	


K TESTINA TAGLI INCREMENTALI PREMIUM ARANCIONE / ORANGE PREMIUM STEP CUT BIT

CODE	DIMENSIONS	PARAMETERS
FTPA2015M12	Ø20 h20 M12	RPM 4500-5200 Feed 750-1800mm/min Max removal 2mm


GR FRESA MANGIATUTTO BLU / BLUE MANGIATUTTO ROUTER

CODE	DIMENSIONS	PARAMETERS
FMG6806	Ø6 Htot 80 conn. Ø6	RPM 5200-6500 Feed 2150-300 mm/min max removal 3mm
FMG8808	Ø8 Htot 80 conn. Ø8	
FMG108010	Ø10 Htot 80 conn. Ø10	
FMG128010	Ø12 Htot 80 conn. Ø10	
FMG158010	Ø15 Htot 80 conn. Ø10	


GR FRESA MANGIATUTTO BLU 1/2 GAS / *BLUE MANGIATUTTO ROUTER 1/2 GAS*

CODE	DIMENSIONS	PARAMETERS
FMGMG650	Ø6 h50	RPM 5500-6200 150-300 mm/min max removal 3mm
FMGMG850	Ø8 h50	
FMGMG1050	Ø10 h50	
FMGMG1250	Ø12 h50	
FMGMG1550	Ø15 h50	

MR FRESA MANGIATUTTO ROSSA / *MANGIATUTTO RED ROUTER*

CODE	DIMENSIONS	PARAMETERS
FMM6806	Ø6 Htot 80 conn. Ø6	RPM 5500-6200 Feed 150-300 mm/min max removal 3mm
FMM8808	Ø8 Htot 80 conn. Ø8	
FMM108010	Ø10 Htot 80 conn. Ø10	
FMM128010	Ø12 Htot 80 conn. Ø10	
FMM158010	Ø15 Htot 80 conn. Ø10	

MR FRESA MANGIATUTTO ROSSA 1/2 GAS / *RED MANGIATUTTO BIT 1/2 GAS*

CODE	DIMENSIONS	PARAMETERS
FMMM650	Ø6 h50	RPM 5500-6200 Feed 150-300 mm/min max removal 3mm
FMMM850	Ø8 h50	
FMMM1050	Ø10 h50	
FMMM1250	Ø12 h50	
FMMM1550	Ø15 h50	

MT FRESA MANGIATUTTO GIALLA / *YELLOW MANGIATUTTO ROUTER*

CODE	DIMENSIONS	PARAMETERS
FMY6806	Ø6 Htot 80 conn. Ø6	RPM 5500-6200 Feed 150-300 mm/min max removal 3mm
FMY8808	Ø8 Htot 80 conn. Ø8	
FMY108010	Ø10 Htot 80 conn. Ø10	
FMY128010	Ø12 Htot 80 conn. Ø10	
FMY158010	Ø15 Htot 80 conn. Ø10	

MT FRESA MANGIATUTTO GIALLA 1/2 GAS / *YELLOW MANGIATUTTO ROUTER 1/2 GAS*

CODE	DIMENSIONS	PARAMETERS
FMYMG650	Ø6 h50	RPM 5500-6200 Feed 150-300 mm/min max removal 3mm
FMYMG850	Ø8 h50	
FMYMG1050	Ø10 h50	
FMYMG1250	Ø12 h50	
FMYMG1550	Ø15 h50	

K FRESA MANGIATUTTO ARANCIONE / *ORANGE MANGIATUTTO ROUTER*

CODE	DIMENSIONS	PARAMETERS
FMA6806	Ø6 Htot 80 conn. Ø6	RPM 5500-6200 Feed 150-300 mm/min max removal 3mm
FMA8808	Ø8 Htot 80 conn. Ø8	
FMA108010	Ø10 Htot 80 conn. Ø10	
FMA128010	Ø12 Htot 80 conn. Ø10	
FMA158010	Ø15 Htot 80 conn. Ø10	


K FRESA MANGIATUTTO ARANCIONE 1/2 GAS /
ORANGE MANGIATUTTO ROUTER 1/2 GAS

CODE	DIMENSIONS	PARAMETERS
FMAMG650	Ø6 h50	RPM 5500-6200 Feed 150-300 mm/min max removal 3mm
FMAMG850	Ø8 h50	
FMAMG1050	Ø10 h50	
FMAMG1250	Ø12 h50	
FMAMG1550	Ø15 h50	


K FRESA FILO TOP ARANGIONE 1/2 GAS / ORANGE FLUSH MOUNT ROUTER 1/2 GAS

CODE	DIMENSIONS	PARAMETERS
FFTP830A	Ø8 h30	RPM 4800-5500 Feed 400-1000 mm/min max removal 3mm
FFTP1030A	Ø10 h30	
FFTP1230A	Ø12 h30	
FFTP1430A	Ø14 h30	
FFTP1630A	Ø16 h30	
FFTP2030A	Ø20 h30	


GR FRESA FILO TOP BLU 1/2 GAS / BLUE FLUSH MOUNT ROUTER 1/2 GAS

CODE	DIMENSIONS	PARAMETERS
FFTP830	Ø8 h30	RPM 4800-5500 Feed 400-1000 mm/min max removal 3mm
FFTP1030	Ø10 h30	
FFTP1230	Ø12 h30	
FFTP1430	Ø14 h30	
FFTP1630	Ø16 h30	
FFTP2030	Ø20 h30	


GR FRESA GOCCIOLATOTIO BLU 1/2 GAS / BLUE DRIP MILLING ROUTER 1/2 GAS

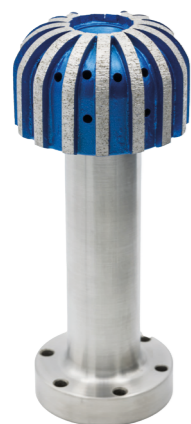
CODE	DIMENSIONS	PARAMETERS
FG10P1	Ø10 r5 POS.1	RPM 5500-7000 Feed 400-600 mm/min
FG10P2	Ø10 r5 POS.2	
FG10P3	Ø10 r5 POS.3	
FG10P4	Ø10 r5 POS.4	
FG12P1	Ø12 r6 POS.1	RPM 5500-6800 Feed 400-600 mm/min
FG12P2	Ø12 r6 POS.2	
FG12P3	Ø12 r6 POS.3	
FG12P4	Ø12 r6 POS.4	
FG15P1	Ø15 r7,5 POS.1	RPM 5500-6500 Feed 400-600 mm/min
FG15P2	Ø15 r7,5 POS.2	
FG15P3	Ø15 r7,5 POS.3	
FG15P4	Ø15 r7,5 POS.4	
FG20P1	Ø20 r10 POS.1	RPM 5500-6500 Feed 400-600 mm/min
FG20P2	Ø20 r10 POS.2	
FG20P3	Ø20 r10 POS.3	
FG20P4	Ø20 r10 POS.4	


MT FRESA FILO TOP GIALLA 1/2 GAS / YELLOW FLUSH MOUNT ROUTER 1/2 GAS

CODE	DIMENSIONS	PARAMETERS
FFTP830Y	Ø8 h30	RPM 4800-5500 Feed 400-1000 mm/min max removal 3mm
FFTP1030Y	Ø10 h30	
FFTP1230Y	Ø12 h30	
FFTP1430Y	Ø14 h30	
FFTP1630Y	Ø16 h30	
FFTP2030Y	Ø20 h30	


GR FRESA PER LAVELLI BLU 1/2 GAS / BLUE SINK ROUTER 1/2 GAS

CODE	DIMENSIONS	PARAMETERS
FL502050	Ø50 r20 h50 h utile 150	RPM 4500-4800 Feed 300-600mm/min Max removal 3mm
FL602050	Ø60 r20 h50 h utile 150	
FL852050	Ø85 r20 h50 h utile 150	


GR FRESA PER LAVELLI BLU FLANGIA / BLUE SINK ROUTER FLANGE

CODE	DIMENSIONS	PARAMETERS
FL502050FL	Ø50 r20 h50 h utile 150	RPM 4500-4800 Feed 300-1000mm/min Max removal 3mm
FL602050FL	Ø60 r20 h50 h utile 150	
FL852050FL	Ø85 r20 h50 h utile 150	


 FOTO CAMPIONE /
EXAMPLE PICTURE

GR FRESA A PROFILO TIPO BLU / BLUE PROFILING ROUTER

DIAMETER	PROFILE THICKNESS	PARAMETERS
30	5	in base a diametro e spessore / based on diameter and thickness
150	120	


 FOTO CAMPIONE /
EXAMPLE PICTURE

MR FRESA A PROFILO TIPO ROSSA / RED PROFILING ROUTER

DIAMETER	PROFILE THICKNESS	PARAMETERS
30	5	in base a diametro e spessore / based on diameter and thickness
150	120	


GR FRESA ANCORAGGI BLU (TYPE GSD) / BLUE ANCHORING BIT (GSD TYPE)

CODE	DIMENSIONS	PARAMETERS
FABGSD12	Ø12 M14fem.	RPM 5200-6500 Feed 150-300mm/min
FABGSD14	Ø14 M14fem.	


MR FRESA ANCORAGGI ROSSO (TYPE GSD) / RED ANCHORING BIT (GSD TYPE)

CODE	DIMENSIONS	PARAMETERS
FRGSD12	Ø12 M14fem.	RPM 5200-6500 Feed 150-300mm/min
FRGSD14	Ø14 M14fem.	


MT FRESA ANCORAGGI GIALLA (TIPO GSD) / YELLOW ANCHORING BIT (GSD TYPE)

CODE	DIMENSIONS	PARAMETERS
FAYGSD12	Ø12 M14fem.	RPM 5200-6500 Feed 150-300mm/min
FAYGSD14	Ø14 M14fem.	


K FRESA ANCORAGGI ARANCIO (TIPO GSD) / ORANGE ANCHORING BIT (GSD TYPE)

CODE	DIMENSIONS	PARAMETERS
FAAGSD12	Ø12 M14fem.	RPM 5200-6500 Feed 150-300mm/min
FAAGSD14	Ø14 M14fem.	

1.2



ELETTRODEPOSTE
ELECTROPLATED



MR FRESA CILINDRICA ATT. CILINDRICO / *ELECTROPLATED CYLINDRICAL ROUTER CYLINDRICAL CONN.*

CODE	DIMENSIONS	PARAMETERS
FCC620	Ø6 h20 CONN. Ø10	RPM 5500-8000 Feed 250-600mm/min
FCC630	Ø6 h30 CONN. Ø10	
FCC820	Ø8 h20 CONN. Ø10	
FCC830	Ø8 h30 CONN. Ø10	
FCC1030	Ø10 h30 CONN. Ø10	
FCC1040	Ø10 h40 CONN. Ø10	



MR FRESA CILINDRICA RAGGIATA ATT. CILINDRICO / *ELECTROPLATED ROUNDED CYLINDRICAL ROUTER CYLINDRICAL CONN.*

CODE	DIMENSIONS	PARAMETERS
FCCR620	Ø6 h20 r3 CONN. Ø10	RPM 5500-8000 Feed 250-600mm/min
FCCR630	Ø6 h30 r3 CONN. Ø10	
FCCR820	Ø8 h20 r3 CONN. Ø10	
FCCR830	Ø8 h30 r3 CONN. Ø10	
FCCR1030	Ø10 h30 r3 CONN. Ø10	
FCCR1040	Ø10 h40 r3 CONN. Ø10	



MR FRESA CILINDRICA 1/2 GAS / *ELECTROPLATED CYLINDRICAL ROUTER 1/2 GAS*

CODE	DIMENSIONS	PARAMETERS
FCE1030	Ø10 h30	RPM 5500-8000 Feed 250-600mm/min
FCE1640	Ø16 h40	
FCE1660	Ø16 h60	
FCE2040	Ø20 h40	
FCE2060	Ø20 h60	
FCE2080	Ø20 h80	
FCE20100	Ø20 h100	
FCE2540	Ø25 h40	
FCE2560	Ø25 h60	
FCE2580	Ø25 h80	
FCE25100	Ø25 h100	



MR FRESA CILINDRICA 1/2 GAS RAGGIATA / *ELECTROPLATED ROUNDED CYLINDRICAL ROUTER 1/2 GAS*

CODE	DIMENSIONS	PARAMETERS
FCER1030	Ø10 h30 r5	RPM 5000-6000 Feed 250-800mm/min
FCER1640	Ø16 h40 r8	
FCER1660	Ø16 h60 r8	
FCER2040	Ø20 h40 r10	
FCER2060	Ø20 h60 r10	
FCER2080	Ø20 h80 r10	
FCER20100	Ø20 h100 r10	
FCER2540	Ø25 h40 r12,5	
FCER2560	Ø25 h60 r12,5	
FCER2580	Ø25 h80 r12,5	
FCER25100	Ø25 h100 r12,5	



MR TESTINA INTERCAMBIABILE / *ELECTROPLATED CHANGEALBE HEAD*

CODE	DIMENSIONS	PARAMETERS
TI1620M10	Ø16 h20 M10	RPM 5000-6000 Feed 300-1000mm/min
TI2020M12	Ø20 h20 M12	
TI2520M14	Ø25 h20 M14	
TI3020M14	Ø30 h20 M14	
TI3030M14	Ø30 h30 M14	



MR TESTINA INTERCAMBIABILE RAGGIATA / *ELECTROPLATED CHANGEALBE HEAD*

CODE	DIMENSIONS	PARAMETERS
TIR1620M10	Ø16 h20 r8 M10	RPM 5000-6000 Feed 300-1000mm/min
TIR2020M12	Ø20 h20 r10 M12	
TIR2520M14	Ø25 h20 r12,5 M14	
TIR3020M14	Ø30 h20 r15 M14	
TIR3030M14	Ø30 h30 r15 M14	



MR

**FRESA CILINDRICA PORTATESTINE /
ELECTROPLATED ROUTER HEAD-HOLDER**

CODE	DIMENSIONS	PARAMETERS
FCEF1630M10	Ø16 h30 M10fem.	RPM 5000-6000 Feed 300-1000mm/min
FCEF1650M10	Ø16 h50 M10fem.	
FCEF2050M12	Ø20 h50 M12fem.	
FCEF2080M12	Ø20 h80 M12fem.	
FCEF20100M12	Ø20 h100 M12fem.	
FCEF2550M14	Ø25 h50 M14fem.	
FCEF2580M14	Ø25 h80 M14fem.	
FCEF25100M14	Ø25 h100 M14fem.	



MR

**FRESA PER ANCORAGGI (TIPO GSD) /
ELECTROPLATED ANCHORING BIT (GSD TYPE)**

CODE	DIMENSIONS	PARAMETERS
FAEGSD12	Ø12 M14	RPM 5200-6500 Feed 150-300mm/min
FAEGSD14	Ø14 M14	



MR

FRESA PER LAVELLI 1/2 GAS / ELECTROPLATED SINK ROUTER 1/2 GAS

CODE	DIMENSIONS	PARAMETERS
FLE5050R15	Ø50 h50 r15	RPM 5000-6000 Feed 500-800mm/min
FLE8550R20	Ø85 h50 r20	



MR

**FRESA PER LAVELLI ATT. FLANGIA /
ELECTROPLATED SINK ROUTER FLANGE CONN.**

CODE	DIMENSIONS	PARAMETERS
FLEF8550R20	Ø85 h50 r20	RPM 5000-6000 Feed 500-800mm/min

1.3



INCISIONE E FINITURA ENGRAVING AND FINISHING


MR FRESA WIDIA 1/2 GAS / *WIDIA ROUTER 1/2 GAS*

CODE	DIMENSIONS	PARAMETERS
FW330	Ø3 h30 r1,5	RPM 8000 Feed 150-200mm/min
FW530	Ø5 h30 r2,5	
FW830	Ø8 h30 r4	
FW350	Ø3 h50 r1,5	
FW550	Ø5 h50 r2,5	
FW850	Ø8 h50 r4	


MR TESTINA INTERCAMBIABILE WIDIA / *WIDIA CHANGEABLE HEAD*

CODE	DIMENSIONS	PARAMETERS
TIW350	Ø3 h50 r1,5	RPM 8000 Feed 150-200mm/min
TIW530	Ø5 h50 r2,5	


MR FRESA WIDIA ATTACCO CILINDRICO / *WIDIA ROUTER CYLINDRICAL CONNECTION*

CODE	DIMENSIONS	PARAMETERS
FWC30	α° 30 CONN. Ø10	RPM 8000-10000 Feed 150-250mm/min
FWC60	α° 60 CONN. Ø10	
FWC90	α° 90 CONN. Ø10	
FWC120	α° 120 CONN. Ø10	


GR FRESA PCD 1/2 GAS / *PCD ROUTER 1/2 GAS*

CODE	DIMENSIONS	PARAMETERS
FPCD515	Ø5 h15 r1,5	RPM 7000-8000 Feed 150-200mm/min
FPCD815	Ø8 h15 r2,5	


GR FRESA PCD ATTACCO CILINDRICO / *PCD ROUTER CYLINDRICAL CONNECTION*

CODE	DIMENSIONS	PARAMETERS
FMDC2	Ø2 h12 Htot39 CONN. Ø3	RPM 8000-10000 Feed 150-250mm/min
FPOL30	α° 30 CONN. Ø10	
FPOL60	α° 60 CONN. Ø10	
FPOL90	α° 90 CONN. Ø10	
FWC105	α° 105 CONN. Ø10	


MR FRESA METALLO DURO 1/2 GAS / *CARBIDE ROUTER 1/2 GAS*

CODE	DIMENSIONS	PARAMETERS
FMD228	Ø2 h28 r1	RPM 8000 Feed 150-200mm/min
FMD628	Ø6 h28 r3	
FMD535	Ø5 h28 r2,5	
FMD1140	Ø11 h40 r5,5	
FMD550	Ø5 h50 r2,5	
FMD580	Ø5 h80 r2,5	
FMD8102	Ø8 h102 r4	


MR FRESA METALLO DURI ATTACCO CILINDRICO / *CARBIDE ROUTER CYLINDRICAL CONNECTION*

CODE	DIMENSIONS	PARAMETERS
FMDC3	Ø3 h13 Htot40 CONN. Ø3	RPM 8000 - 10000 Feed 150-200mm/min
FMDC4	Ø4 h10 Htot45 CONN. Ø3	
FMDC5	Ø5 h12 Htot47 CONN. Ø3	
FMDC6	Ø6 h13 Htot48 CONN. Ø3	
FMDC10	Ø10 h20 Htot65 CONN. Ø6	

GR Granito
Granite

MR Marmo
Marble

S Arenaria
Sandstone

Q Quarzo Naturale
Natural Quartz

MT Materiali Tecnici
Technical Materials

K Ceramica
Ceramic

V Vetro - Stoneglass
Glass - Stoneglass



2/ FORETTI

Foretti per la sagomatura, finitura e la foratura di marmo, granito, materiali ceramici, pietre naturali ed agglomerati, sia per macchine manuali che a controllo numerico

DRILLS

Routers for shaping boring and finishing different kinds of materials like: granite, marble, technical materials, quartzite and very hard materials both for hand and numerical machines

2.1



SINTERIZZATO
SINTERED


GR FORETTO BLU A SETTORI / *SEGMENTED BLUE DRILL*

CODE	DIMENSIONS	PARAMETERS
FSG20100	Ø20 h100	RPM 2500-3500 Feed 60-110mm/min
FSG30100	Ø30 h100	
FSG35100	Ø35 h100	
FSG50100	Ø50 h100	RPM 1800-2500 Feed 50-100mm/min
FSG60100	Ø60 h100	
FSG80100	Ø80 h100	
FSG90100	Ø90 h100	
FSG100100	Ø100 h100	RPM 1500-1700 Feed 30-65mm/min
FSG120100	Ø120 h100	

GR FORETTO BLU A CORONA CONTINUA / *CONTINUOUS RIM BLUE DRILL*

CODE	DIMENSIONS	PARAMETERS
FKG10	Ø10 h55	RPM 2500-3500 Feed 60-110mm/min
FKG15	Ø15 h55	
FKG20	Ø20 h55	
FKG25	Ø25 h55	RPM 1800-2500 Feed 50-100mm/min
FKG30	Ø30 h55	
FKG32	Ø32 h55	
FKG35	Ø35 h55	
FKG45	Ø45 h55	RPM 1500-1700 Feed 30-65mm/min
FKG60	Ø60 h55	
FKG68	Ø68 h55	
FKG100	Ø100 h55	


MT FORETTO GIALLO A CORONA CONTINUA / *CONTINUOUS RIM YELLOW DRILL*

CODE	DIMENSIONS	PARAMETERS
FKY10	Ø10 h55	RPM 3000-4800 Feed 15-30mm/min
FKY15	Ø15 h55	
FKY20	Ø20 h55	
FKY25	Ø25 h55	RPM 1800-2300 Feed 15-30mm/min
FKY30	Ø30 h55	
FKY32	Ø32 h55	
FKY35	Ø35 h55	
FKY45	Ø45 h55	RPM 1100-1800 Feed 15-30mm/min
FKY60	Ø60 h55	
FKY68	Ø68 h55	
FKY100	Ø100 h55	

K FORETTO ARANCIO A CORONA CONTINUA / *CONTINUOUS RIM ORANGE DRILL*

CODE	DIMENSIONS	PARAMETERS
FKA10	Ø10 h55	RPM 3000-4800 Feed 15-30mm/min
FKA15	Ø15 h55	
FKA20	Ø20 h55	
FKA25	Ø25 h55	RPM 1800-2300 Feed 15-30mm/min
FKA30	Ø30 h55	
FKA32	Ø32 h55	
FKA35	Ø35 h55	
FKA45	Ø45 h55	RPM 1100-1800 Feed 15-30mm/min
FKA60	Ø60 h55	
FKA68	Ø68 h55	
FKA100	Ø100 h55	





GR

FORETTO BLU A CORONA CONTINUA ATT. M14 /
CONTINUOUS RIM BLUE DRILL M14 CONN

CODE	DIMENSIONS	PARAMETERS
FKG10M14	Ø10 h55	RPM 2500-3500 Feed 60-110mm/min
FKG20M14	Ø20 h55	
FKG32M14	Ø32 h55	
FKG35M14	Ø35 h55	



GR

FORETTO BLU A CORONA CONTINUA ATT. 5/8" /
CONTINUOUS RIM BLUE DRILL 5/8" CONN

CODE	DIMENSIONS	PARAMETERS
FKG105-8	Ø10 h55	RPM 2500-3500 Feed 60-110mm/min
FKG205-8	Ø20 h55	
FKG325-8	Ø32 h55	
FKG355-8	Ø35 h55	



GR

FORETTO BLU A CORONA CONTINUA ATT. CILINDRICO O ESAGONALE /
CONTINUOUS RIM BLUE DRILL CYLINDRICAL OR HEXAGONAL CONN.

CODE	DIMENSIONS	PARAMETERS
FKG20AT	Ø20 h55	RPM 2500-3500 Feed 60-110mm/min
FKG325AT	Ø32 h55	
FKG35AT	Ø35 h55	



MT

FORETTO GIALLO A CORONA CONTINUA ATT. M14 /
CONTINUOUS RIM YELLOW DRILL M14 CONN.

CODE	DIMENSIONS	PARAMETERS
FKY10M14	Ø10 h55	RPM 2500-3500 Feed 60-110mm/min
FKY20M14	Ø20 h55	
FKY32M14	Ø32 h55	
FKY35M14	Ø35 h55	



MT

FORETTO GIALLO A CORONA CONTINUA ATT. 5/8" /
CONTINUOUS RIM YELLOW DRILL 5/8" CONN.

CODE	DIMENSIONS	PARAMETERS
FKY105-8	Ø10 h55	RPM 2500-3500 Feed 60-110mm/min
FKY205-8	Ø20 h55	
FKY325-8	Ø32 h55	
FKY355-8	Ø35 h55	



MT

FORETTO GIALLO A CORONA CONTINUA ATT. CILINDRICO O ESAGONALE /
CONTINUOUS RIM YELLOW DRILL CYLINDRICAL OR HEXAGONAL CONN.

CODE	DIMENSIONS	PARAMETERS
FKY20AT	Ø20 h55	RPM 2500-3500 Feed 60-110mm/min
FKY325AT	Ø32 h55	
FKY35AT	Ø35 h55	



K FORETTO ARANCIO A CORONA CONTINUA ATT. M14 /
CONTINUOUS RIM ORANGE DRILL M14 CONN

CODE	DIMENSIONS	PARAMETERS
FKA10M14	Ø10 h55	RPM 2500-3500 Feed 60-110mm/min
FKA20M14	Ø20 h55	
FKA32M14	Ø32 h55	
FKA35M14	Ø35 h55	



K FORETTO ARANCIO A CORONA CONTINUA ATT. 5/8" /
CONTINUOUS RIM ORANGE DRILL 5/8" CONN

CODE	DIMENSIONS	PARAMETERS
FKA105-8	Ø10 h55	RPM 2500-3500 Feed 60-110mm/min
FKA205-8	Ø20 h55	
FKA325-8	Ø32 h55	
FKA355-8	Ø35 h55	



K FORETTO ARANCIO A CORONA CONTINUA ATT. CILINDRICO O ESAGONALE /
CONTINUOUS RIM ORANGE DRILL CYLINDRICAL OR HEXAGONAL CONN.

CODE	DIMENSIONS	PARAMETERS
FKA20AT	Ø20 h55	RPM 2500-3500 Feed 60-110mm/min
FKA325AT	Ø32 h55	
FKA35AT	Ø35 h55	

2.2



ELETTRODEPOSTI
ELECTROPLATED



MR FORETTO ELETTRODEPOSTO 1/2 GAS / *ELECTROPLATED DRILL 1/2 GAS*

CODE	DIMENSIONS	PARAMETERS
FDE20100	Ø20 h100	RPM 1500-2800 Feed 40-100mm/min
FDE25100	Ø25 h100	
FDE30100	Ø30 h100	
FDE35100	Ø35 h100	
FDE40100	Ø40 h100	
FDE50100	Ø50 h100	
FDE60100	Ø60 h100	
FDE80100	Ø80 h100	
FDE100100	Ø100 h100	



MR FORETTO ELETTRODEPOSTO ATT. 5/8" / *ELECTROPLATED DRILL 5/8" CONN.*

CODE	DIMENSIONS	PARAMETERS
FDE205-8	Ø20 h55	RPM 1500-2800 Feed 40-100mm/min
FDE255-8	Ø25 h55	
FDE305-8	Ø30 h55	
FDE355-8	Ø35 h55	
FDE455-8	Ø45 h55	



MR FORETTO ELETTRODEPOSTO ATT. M14 / *ELECTROPLATED DRILL M14 CONN.*

CODE	DIMENSIONS	PARAMETERS
FDE20M14	Ø20 h55	RPM 1500-2800 Feed 40-100mm/min
FDE25M14	Ø25 h55	
FDE30M14	Ø30 h55	
FDE35M14	Ø35 h55	
FDE45M14	Ø45 h55	



MR FORETTO ELETTRODEPOSTO ATT. CILINDRICO/ESAGONALE / *ELECTROPLATED DRILL CYLINDRICAL/HEXAGONAL CONN.*

CODE	DIMENSIONS	PARAMETERS
FDE20AT	Ø20 h55	RPM 1500-2800 Feed 40-100mm/min
FDE25AT	Ø25 h55	
FDE30AT	Ø30 h55	
FDE35AT	Ø35 h55	
FDE45AT	Ø45 h55	

GR Granito
Granite

MR Marmo
Marble

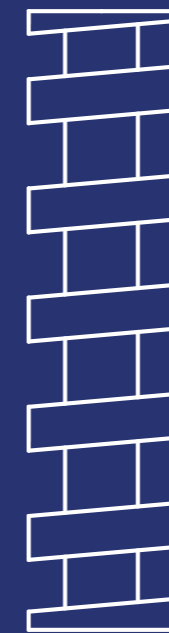
S Arenaria
Sandstone

Q Quarzo Naturale
Natural Quartz

MT Materiali Tecnici
Technical Materials

K Ceramica
Ceramic

V Vetro - Stoneglass
Glass - Stoneglass



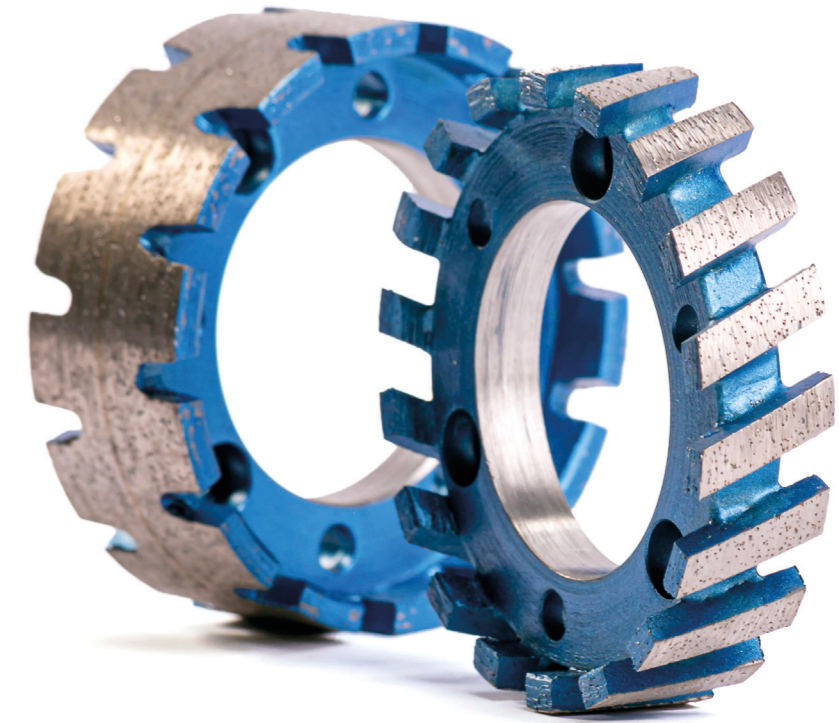
3 / MOLE

Mole per la calibratura e la sagomatura di marmo, granito, materiali ceramici, pietre naturali ed agglomerati

WHEELS

Wheels for the calibration and shaping of marble, granite, ceramic materials, natural stone and composite materials

3.1



SINTERIZZATE
SINTEREDS


GR MOLA GRECATA TIPO BLU / *BLUE GRECATA WHEEL*

CODE	DIMENSIONS	PARAMETERS
MSGR50302H20	Ø50 h30 conn. 2+2 bore 20	RPM 4000-5200 Feed 400-800mm/min
MSGR85303H50	Ø85 h30 conn. 3+3 bore 50	
MSGR90303H50	Ø90 h30 conn. 3+3 bore 50	
MSGR150303H50	Ø150 h30 conn. 3+3 bore 50	


MR MOLA GRECATA TIPO ROSSA / *RED GRECATA WHEEL*

CODE	DIMENSIONS	PARAMETERS
MSMR50302H20	Ø50 h30 conn. 2+2 bore 20	RPM 4000-4500 Feed 400-800mm/min
MSMR85303H50	Ø85 h30 conn. 3+3 bore 50	
MSMR90303H50	Ø90 h30 conn. 3+3 bore 50	
MSMR150303H50	Ø150 h30 conn. 3+3 bore 50	


GR MOLA DA SBANCO TIPO BLU / *BLUE STUBBING WHEEL*

CODE	DIMENSIONS	PARAMETERS
MSG50202H20	Ø50 h20 conn. 2+2 bore 20	RPM 4000-4500 Feed 400-800mm/min
MSG85203H50	Ø85 h20 conn. 3+3 bore 50	


Q MOLA DA SBANCO TIPO NERA / *BLACK STUBBING WHEEL*

CODE	DIMENSIONS	PARAMETERS
MSQ50202H20	Ø50 h20 conn. 2+2 bore 20	RPM 4000-4500 Feed 400-800mm/min
MSQ85203H50	Ø85 h20 conn. 3+3 bore 50	


GR MOLA DA SBANCO TIPO BLU NON REVERSIBILE / *BLUE NOT REVERSIBLE STUBBING WHEEL*

CODE	DIMENSIONS	PARAMETERS
MSGNR50202H20	Ø50 h20 conn. 2 hole bore 10	RPM 4000-4500 Feed 400-800mm/min
MSGNR85203H50	Ø85 h20 conn. 3 hole bore 50	

GR

MOLA PIANA TIPO BLU / BLUE FLAT WHEEL



CODE	DIMENSIONS	PARAMETERS
MG35020	Ø350 x 20	in base a diametro e spessore / based on diameter and thickness
MG35030	Ø350 x 30	
MG35040	Ø350 x 40	
MG35050	Ø350 x 50	
MG40020	Ø400 x 20	
MG40030	Ø400 x 30	
MG40040	Ø400 x 40	
MG40050	Ø400 x 50	
MG45050	Ø450 x 20	
MG50030	Ø500 x 30	
MG50040	Ø500 x 40	
MG50050	Ø500 x 50	
MG60010	Ø600 x 10	

altri diametri e spessori disponibili / other diameters and thicknesses available

GR

MOLA PIANA TIPO BLU CORPO PVC / BLUE FLAT WHEEL PVC BODY

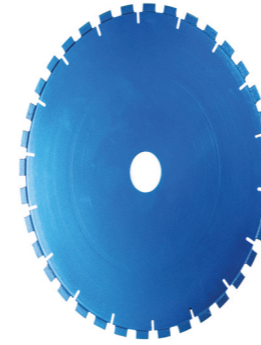


CODE	DIMENSIONS	PARAMETERS
MG35025PVC	Ø350 x 25	in base a diametro e spessore / based on diameter and thickness
MG35030PVC	Ø350 x 30	
MG35040PVC	Ø350 x 40	
MG35050PVC	Ø350 x 50	
MG40025PVC	Ø400 x 25	
MG40030PVC	Ø400 x 30	
MG40040PVC	Ø400 x 40	
MG40050PVC	Ø400 x 50	
MG50025PVC	Ø500 x 25	
MG50030PVC	Ø500 x 30	
MG50040PVC	Ø500 x 40	
MG50050PVC	Ø500 x 50	
MG60025PVC	Ø600 x 25	
MG60030PVC	Ø600 x 30	
MG60040PVC	Ø600 x 40	
MG60050PVC	Ø600 x 50	

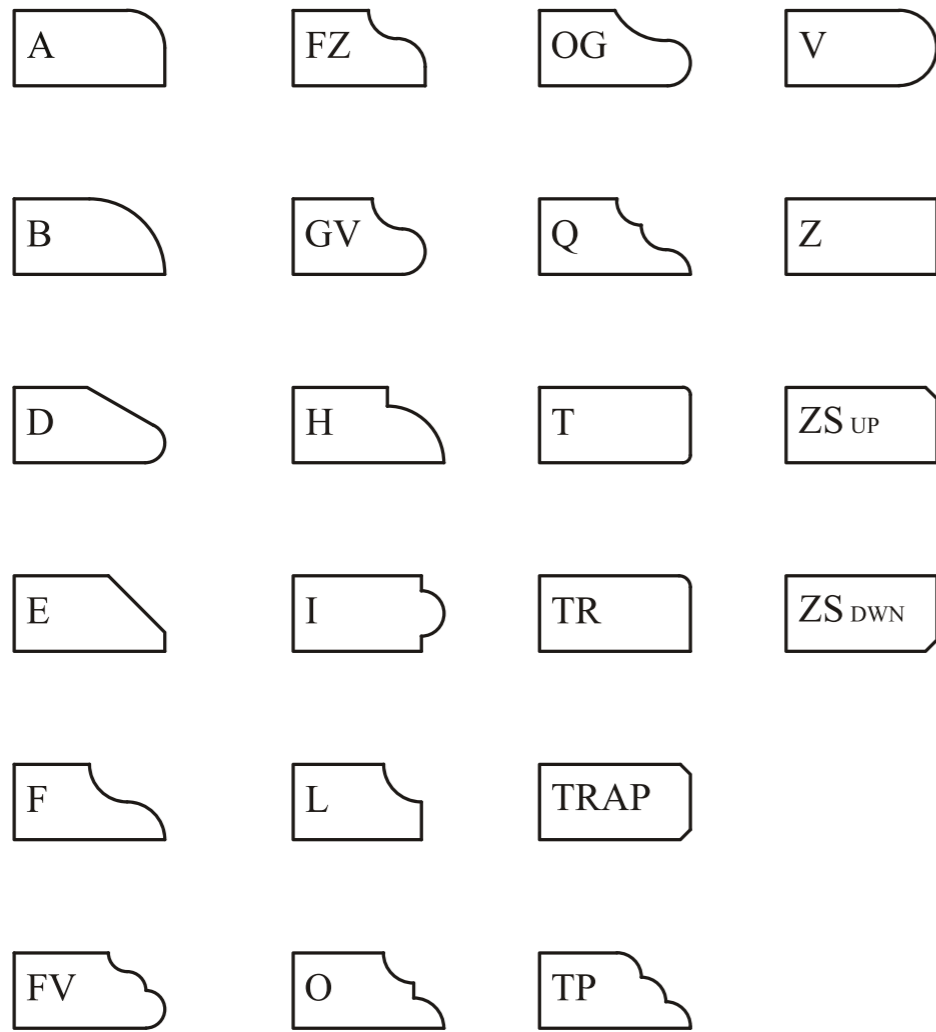
MR**MOLA PIANA TIPO ROSSA / RED FLAT WHEEL**

CODE	DIMENSIONS	PARAMETERS
MM35020	Ø350 x 20	in base a diametro e spessore / based on diameter and thickness
MM35030	Ø350 x 30	
MM35040	Ø350 x 40	
MM35050	Ø350 x 50	
MM40020	Ø400 x 20	
MM40030	Ø400 x 30	
MM40040	Ø400 x 40	
MM40050	Ø400 x 50	
MM45020	Ø450 x 20	
MM50030	Ø500 x 30	
MM50040	Ø500 x 40	
MM50050	Ø500 x 50	
MM60010	Ø600 x 10	

altri diametri e spessori disponibili / other diameters and thicknesses available

GR**MOLA DA TORNIO TIPO BLU SILENZIATA / BLUE LATHE WHEEL SILENT BODY**

CODE	DIMENSIONS	PARAMETERS
MTGS4008	Ø400 x 8	in base a diametro e spessore / based on diameter and thickness
MTGS40010	Ø400 x 10	
MTGS5008	Ø500 x 8	
MTGS50010	Ø500 x 10	
MTGS60010	Ø600 x 10	



GR MOLA PRE-TAGLIO PER LUCIDACOSTE / PRE-CUT WHEEL FOR EDGE POLISHING MACHINE

CODE	DIMENSIONS	PARAMETERS
MLPT130	Ø130	SEGUIRE LE INDICAZIONI DEL COSTRUTTORE DELLA MACCHINA
MLPT150	Ø150	



GR MOLA GENERATRICE PER LUCIDACOSTE / GENERATING WHEEL FOR EDGE POLISHING MACHINE

CODE	DIMENSIONS	PARAMETERS
MLGEN130	Ø130	SEGUIRE LE INDICAZIONI DEL COSTRUTTORE DELLA MACCHINA
MLGEN150	Ø150	

GR MOLA PROFILO TIPO BLU / BLUE PROFILING WHEEL

CODE	DIMENSIONS	PARAMETERS
MPG-	Ø150 x 500 Ø500 x 150	in base a diametro e spessore / based on diameter and thickness

MR MOLA PROFILO TIPO ROSSA / RED PROFILING WHEEL

CODE	DIMENSIONS	PARAMETERS
MPM-	Ø150 x 500 Ø500 x 150	in base a diametro e spessore / based on diameter and thickness



GR MOLA CALIBRATRICE / CALIBRATOR WHEEL

CODE	DIMENSIONS	PARAMETERS
MCAL150	Ø150	SEGUIRE LE INDICAZIONI DEL COSTRUTTORE DELLA MACCHINA
MCAL250	Ø250	

3.2



ELETTRODEPOSTE
ELECTROPLATED



MR MOLA DA SBANCO ELETTRODEPOSTA / *ELECTROPLATED STUBBING WHEEL*

CODE	DIMENSIONS	PARAMETERS
MSM50202H20	Ø50 h20 conn. 2+2 bore 20	RPM 5200-6500 Feed 1500-3000mm/min Max removal 2,5mm 40/45% surface work
MSM85203H50	Ø85 h20 conn. 3+3 bore 50	



MR MOLA DA TORNIO ELETTRODEPOSTA / *ELECTROPLATED LATHE WHEEL*

CODE	DIMENSIONS	PARAMETERS
MTE4008	Ø400 x 8 x 10 x 10 + rinf.	RPM 2000-2600
MTE40010	Ø400 x 10 x 10 x 10 + rinf.	
MTE50010	Ø500 x 10 x 10 x 10 + rinf.	
MTE60010	Ø600 x 10 x 10 x 10 + rinf.	

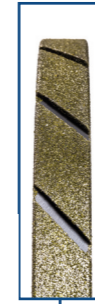


MR MOLA DA SBANCO MAGNUM ELETTRODEPOSTA / *ELECTROPLATED MAGNUMSTUBBING WHEEL*

CODE	DIMENSIONS	PARAMETERS
MSMM50252H10	Ø50 h25 conn. 2 holes bore 10	RPM 5200-6500 Feed 1500-3000mm/min Max removal 2,5mm 40/45% surface work
MSMM85253H5	Ø85 h25 conn. 3 holes bore 50	



MR



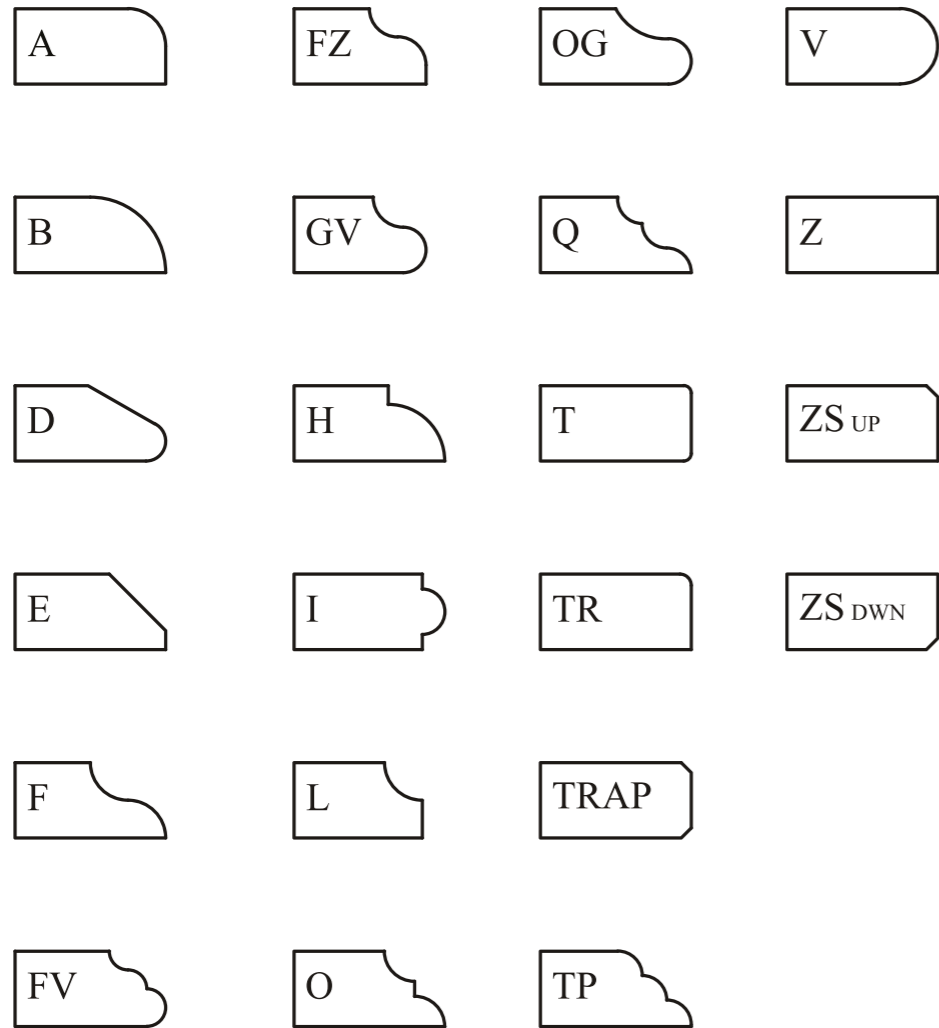
MOLA PIANA ELETTRODEPOSTA / *ELECTROPLATED FLAT WHEEL*

CODE	DIMENSIONS	PARAMETERS
ME	Ø150 x 5 Ø500 x 150	in base a diametro e spessore / <i>based on diameter and thickness</i>



MR MOLA DA SBANCO ELETTRODEPOSTA TWIN / *ELECTROPLATED TWIN STUBBING WHEEL*

CODE	DIMENSIONS	PARAMETERS
MSMT50202H20	Ø50 h20 conn. 2+2 bore 20	RPM 5200-6500 Feed 1500-3000mm/min Max removal 2,5mm 40/45% surface work
MSMT85203H50	Ø85 h20 conn. 3+3 bore 50	



MR MOLA PROFILO ELETTRODEPOSTA / *ELECTROPLATED PROFILING WHEEL*

CODE	DIMENSIONS	PARAMETERS
MPE	Ø150 x 5 Ø500 x 150	in base a diametro e spessore / <i>based on diameter and thickness</i>

4 / CNC

Mole e frese per macchine a controllo numerico per marmo, granito e agglomerati

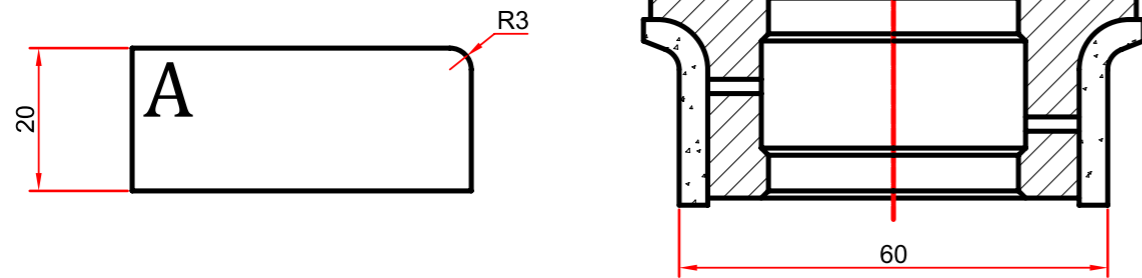
CNC

Wheels and routers for numerical control machines for marble, granite and composite materials

4.1



MOLE CNC
CNC WHEELS


A20 r3 GRANITO / A20 r3 GRANITE

CODE	TYPE	Ø min	POSISTION
CSA20R3P1	S	60	1
CCA20R3P2	C	60	2
CCA20R3P3	C	60	3
CCA20R3P4	C	60	4

A20 r3 MATERIALI DURI / A20 r3 HARD MATERIALS

CODE	TYPE	Ø min	POSISTION
CSA20R3P1Q	S	60	1
CCA20R3P2Q	C	60	2
CCA20R3P3Q	C	60	3
CCA20R3P4Q	C	60	4

A20 r3 MATERIALI TECNICI / A20 r3 TECHNICAL MATERIALS

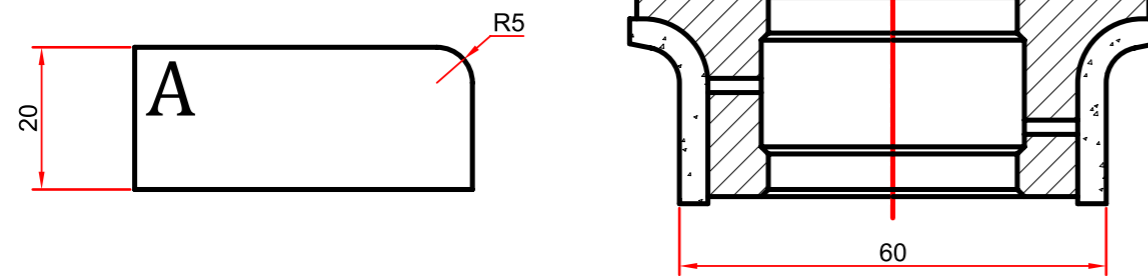
CODE	TYPE	Ø min	POSISTION
CSA20R3P1Y	S	60	1
CCA20R3P2Y	C	60	2
CCA20R3P3Y	C	60	3
CCA20R3P4Y	C	60	4

A20 r3 ELETTRORDEPOSTO / A20 r3 ELECTROPLATED

CODE	TYPE	Ø min	POSISTION
CEA20R3P1	E.F.	60	1
CEA20R3P2	E.C.	60	2
CEA20R3P3	E.C.	60	3
CEA20R3P4	E.C.	60	4

A20 r3 LUCIDANTE / A20 r3 POLISHING

CODE	TYPE	Ø min	POSISTION
CHA20R3P5	L	60	5
CHA20R3P6	L	60	6
CHA20R3P7	L	60	7


A20 r5 GRANITO / A20 r5 GRANITE

CODE	TYPE	Ø min	POSISTION
CSA20R5P1	S	60	1
CCA20R5P2	C	60	2
CCA20R5P3	C	60	3
CCA20R5P4	C	60	4

A20 r5 MATERIALI DURI / A20 r5 HARD MATERIALS

CODE	TYPE	Ø min	POSISTION
CSA20R5P1Q	S	60	1
CCA20R5P2Q	C	60	2
CCA20R5P3Q	C	60	3
CCA20R5P4Q	C	60	4

A20 r5 MATERIALI TECNICI / A20 r5 TECHNICAL MATERIALS

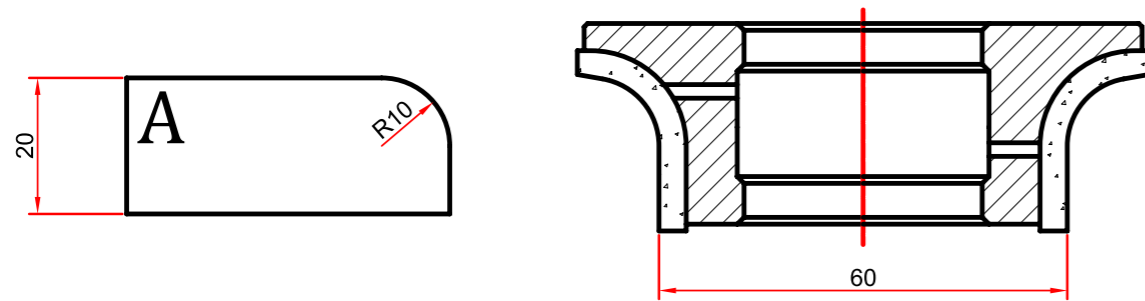
CODE	TYPE	Ø min	POSISTION
CSA20R5P1Y	S	60	1
CCA20R5P2Y	C	60	2
CCA20R5P3Y	C	60	3
CCA20R5P4Y	C	60	4

A20 r5 ELETTRORDEPOSTO / A20 r5 ELECTROPLATED

CODE	TYPE	Ø min	POSISTION
CEA20R5P1	E.F.	60	1
CEA20R5P2	E.C.	60	2
CEA20R5P3	E.C.	60	3
CEA20R5P4	E.C.	60	4

A20 r5 LUCIDANTE / A20 r5 POLISHING

CODE	TYPE	Ø min	POSISTION
CHA20R5P5 L 60 5	L	60	5
CHA20R5P6 L 60 6	L	60	6
CHA20R5P7 L 60 7	L	60	7


A20 r10 GRANITO / A20 r10 GRANITE

CODE	TYPE	Ø min	POSISTION
CSA20R10P1	S	60	1
CCA20R10P2	C	60	2
CCA20R10P3	C	60	3
CCA20R10P4	C	60	4

A20 r10 MATERIALI DURI / A20 r10 HARD MATERIALS

CODE	TYPE	Ø min	POSISTION
CSA20R10P1Q	S	60	1
CCA20R10P2Q	C	60	2
CCA20R10P3Q	C	60	3
CCA20R10P4Q	C	60	4

A20 r10 MATERIALI TECNICI / A20 r10 TECHNICAL MATERIALS

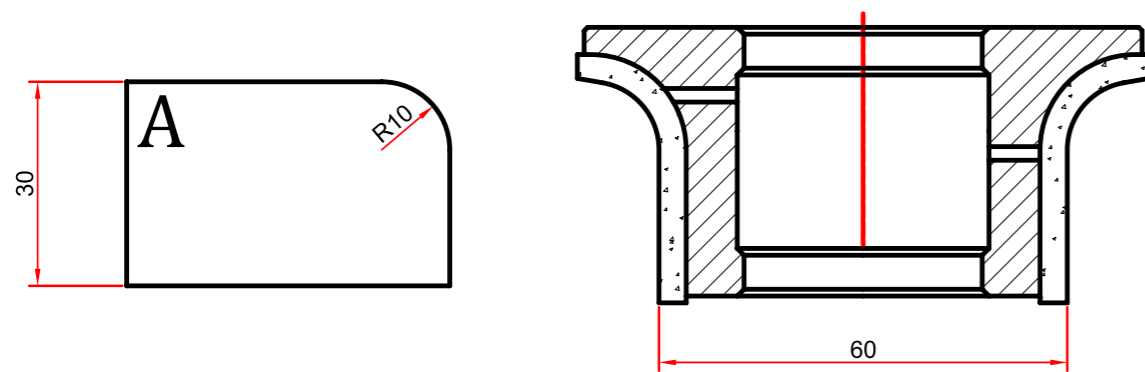
CODE	TYPE	Ø min	POSISTION
CSA20R10P1Y	S	60	1
CCA20R10P2Y	C	60	2
CCA20R10P3Y	C	60	3
CCA20R10P4Y	C	60	4

A20 r10 ELETTRODEPOSTO / A20 r10 ELECTROPLATED

CODE	TYPE	Ø min	POSISTION
CEA20R10P1	E.F.	60	1
CEA20R10P2	E.C.	60	2
CEA20R10P3	E.C.	60	3
CEA20R10P4	E.C.	60	4

A20 r10 LUCIDANTE / A20 r10 POLISHING

CODE	TYPE	Ø min	POSISTION
CHA20R10P5	L	60	5
CHA20R10P6	L	60	6
CHA20R10P7	L	60	7


A30 r10 GRANITO / A30 r10 GRANITE

CODE	TYPE	Ø min	POSISTION
CSA30R10P1	S	60	1
CCA30R10P2	C	60	2
CCA30R10P3	C	60	3
CCA30R10P4	C	60	4

A30 r10 MATERIALI DURI / A30 r10 HARD MATERIALS

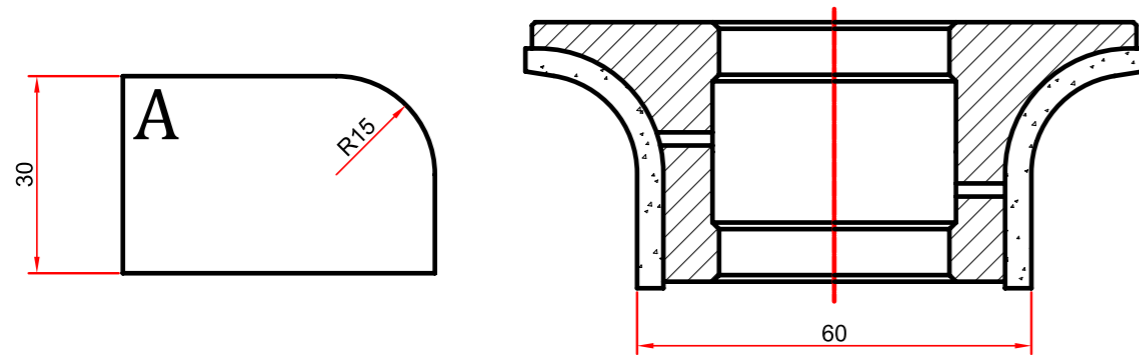
CODE	TYPE	Ø min	POSISTION
CSA30R10P1Q	S	60	1
CCA30R10P2Q	C	60	2
CCA30R10P3Q	C	60	3
CCA30R10P4Q	C	60	4

A30 r10 ELETTRODEPOSTO / A30 r10 ELECTROPLATED

CODE	TYPE	Ø min	POSISTION
CEA30R10P1	E.F.	60	1
CEA30R10P2	E.C.	60	2
CEA30R10P3	E.C.	60	3
CEA30R10P4	E.C.	60	4

A30 r10 LUCIDANTE / A23 r10 POLISHING

CODE	TYPE	Ø min	POSISTION
CHA30R10P5	L	60	5
CHA30R10P6	L	60	6
CHA30R10P7	L	60	7


A30 r15 GRANITO / A30 r15 GRANITE

CODE	TYPE	Ø min	POSISTION
CSA30R15P1	S	60	1
CCA30R15P2	C	60	2
CCA30R15P3	C	60	3
CCA30R15P4	C	60	4

A30 r15 MATERIALI DURI / A30 r15 HARD MATERIALS

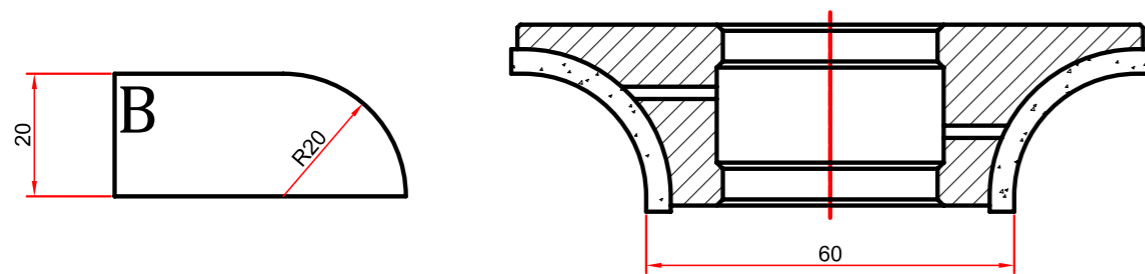
CODE	TYPE	Ø min	POSISTION
CSA30R15P1Q	S	60	1
CCA30R15P2Q	C	60	2
CCA30R15P3Q	C	60	3
CCA30R15P4Q	C	60	4

A30 r15 ELETTRODEPOSTO / A30 r15 ELECTROPLATED

CODE	TYPE	Ø min	POSISTION
CEA30R15P1	E.F.	60	1
CEA30R15P2	E.C.	60	2
CEA30R15P3	E.C.	60	3
CEA30R15P4	E.C.	60	4

A30 r10 LUCIDANTE / A23 r10 POLISHING

CODE	TYPE	Ø min	POSISTION
CHA30R15P5	L	60	5
CHA30R15P6	L	60	6
CHA30R15P7	L	60	7


B20 (MEZZO TORO) GRANITO / B20 (HALF BULLNOSE) GRANITE

CODE	TYPE	Ø min	POSISTION
CSB20P1	S	60	1
CCB20P2	C	60	2
CCB20P3	C	60	3
CCB20P4	C	60	4

B20 (MEZZO TORO) MATERIALI DURI / B20 (HALF BULLNOSE) HARD MATERIALS

CODE	TYPE	Ø min	POSISTION
CSB20P1Q	S	60	1
CCB20P2Q	C	60	2
CCB20P3Q	C	60	3
CCB20P4Q	C	60	4

B20 (MEZZO TORO) MATERIALI TECNICI / B20 (HALF BULLNOSE) TECHNICAL MATERIALS

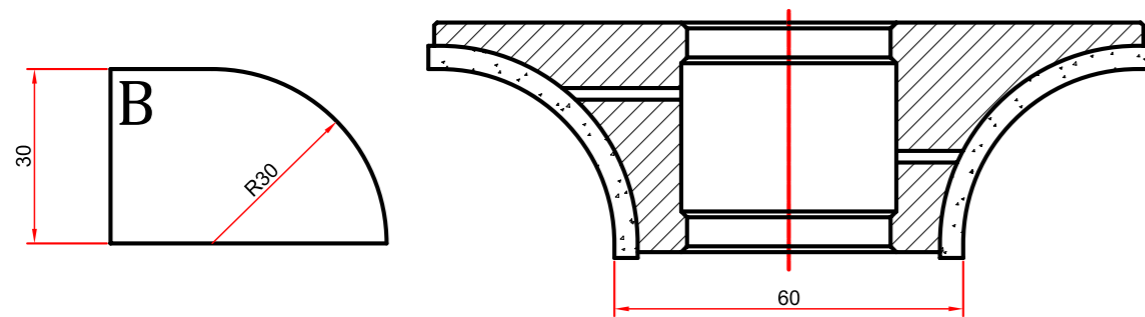
CODE	TYPE	Ø min	POSISTION
CSB20P1Y	S	60	1
CCB20P2Y	C	60	2
CCB20P3Y	C	60	3
CCB20P4Y	C	60	4

B20 (MEZZO TORO) ELETTRODEPOSTO / B20 (HALF BULLNOSE) ELECTROPLATED

CODE	TYPE	Ø min	POSISTION
CEB20P1	E.F.	60	1
CEB20P2	E.C.	60	2
CEB20P3	E.C.	60	3
CEB20P4	E.C.	60	4

B20 (MEZZO TORO) LUCIDANTE / B20 (HALF BULLNOSE) POLISHING

CODE	TYPE	Ø min	POSISTION
CHB20P5	L	60	5
CHB20P6	L	60	6
CHB20P7	L	60	7


B30 (MEZZO TORO) GRANITO / B30 (HALF BULLNOSE) GRANITE

CODE	TYPE	Ø min	POSISTION
CSB30P1	S	60	1
CCB30P2	C	60	2
CCB30P3	C	60	3
CCB30P4	C	60	4

B30 (MEZZO TORO) MATERIALI DURI / B30 (HALF BULLNOSE) HARD MATERIALS

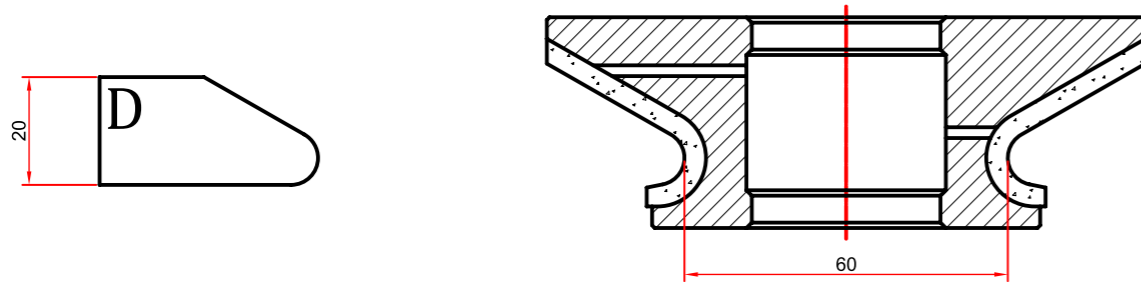
CODE	TYPE	Ø min	POSISTION
CSB30P1Q	S	60	1
CCB30P2Q	C	60	2
CCB30P3Q	C	60	3
CCB30P4Q	C	60	4

B30 (MEZZO TORO) MATERIALI TECNICI / B30 (HALF BULLNOSE) ELECTROPLATED

CODE	TYPE	Ø min	POSISTION
CEB30P1	E.F.	60	1
CEB30P2	E.C.	60	2
CEB30P3	E.C.	60	3
CEB30P4	E.C.	60	4

B30 (MEZZO TORO) LUCIDANTE / B30 (HALF BULLNOSE) POLISHING

CODE	TYPE	Ø min	POSISTION
CHB30P5	L	60	5
CHB30P6	L	60	6
CHB30P7	L	60	7


D20 r5 GRANITO / D20 r5 GRANITE

CODE	TYPE	Ø min	POSISTION
CSD20R5P1	S	60	1
CCD20R5P2	C	60	2
CCD20R5P3	C	60	3
CCD20R5P4	C	60	4

D20 r5 MATERIALI DURI / D20 r5 HARD MATERIALS

CODE	TYPE	Ø min	POSISTION
CSD20R5P1Q	S	60	1
CCD20R5P2Q	C	60	2
CCD20R5P3Q	C	60	3
CCD20R5P4Q	C	60	4

D20 r5 MATERIALI TECNICI / D20 r5 TECHNICAL MATERIALS

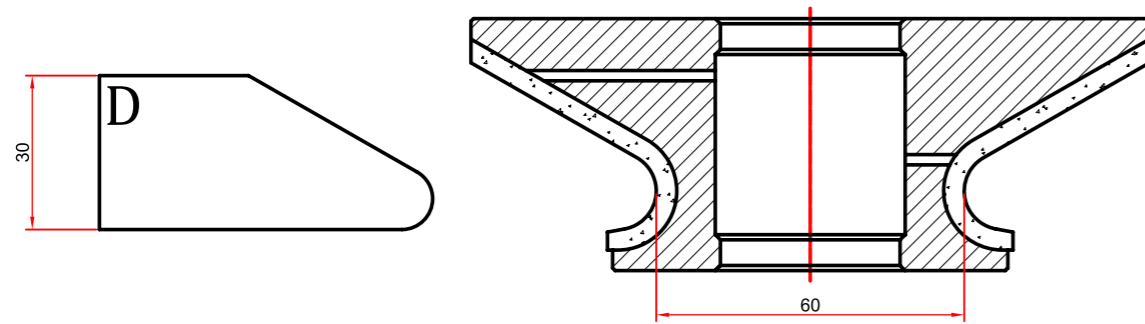
CODE	TYPE	Ø min	POSISTION
CSD20R5P1Y	S	60	1
CCD20R5P2Y	C	60	2
CCD20R5P3Y	C	60	3
CCD20R5P4Y	C	60	4

D20 r5 ELETTRODEPOSTO / D20 r5 ELECTROPLATED

CODE	TYPE	Ø min	POSISTION
CED20R5P1	E.F.	60	1
CED20R5P2	E.C.	60	2
CED20R5P3	E.C.	60	3
CED20R5P4	E.C.	60	4

D20 r5 LUCIDANTE / D20 r5 POLISHING

CODE	TYPE	Ø min	POSISTION
CHD20R5P5	L	60	5
CHD20R5P6	L	60	6
CHD20R5P7	L	60	7


D30 r6 GRANITO / D30 r6 GRANITE

CODE	TYPE	Ø min	POSISTION
CSD30R6P1	S	60	1
CCD30R6P2	C	60	2
CCD30R6P3	C	60	3
CCD30R6P4	C	60	4

D30 r6 MATERIALI DURI / D30 r6 HARD MATERIALS

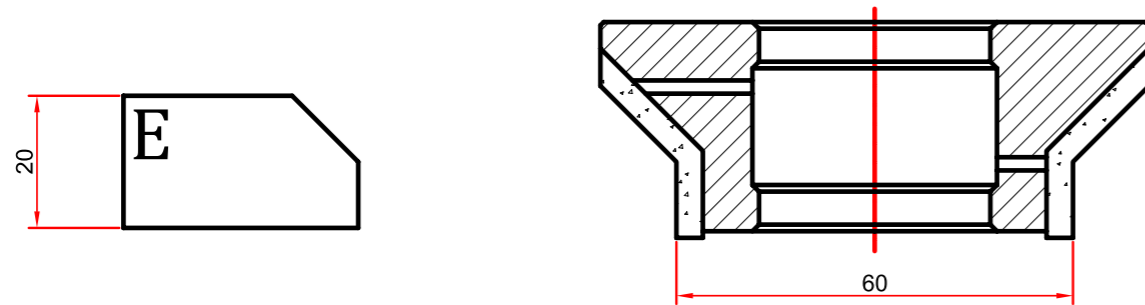
CODE	TYPE	Ø min	POSISTION
CSD30R5P1Q	S	60	1
CCD30R5P2Q	C	60	2
CCD30R5P3Q	C	60	3
CCD30R5P4Q	C	60	4

D30 r6 ELETTRODEPOSTO / D30 r6 ELECTROPLATED

CODE	TYPE	Ø min	POSISTION
CED30R6P1	E.F.	60	1
CED30R6P2	E.C.	60	2
CED30R6P3	E.C.	60	3
CED30R6P4	E.C.	60	4

D30 r6 LUCIDANTE / D30 r6 POLISHING

CODE	TYPE	Ø min	POSISTION
CHD30R6P5	L	60	5
CHD30R6P6	L	60	6
CHD30R6P7	L	60	7



E20 b10 GRANITO / E20 b10 GRANITE

CODE	TYPE	Ø min	POSISTION
CSE20P1	S	60	1
CCE20P2	C	60	2
CCE20P3	C	60	3
CCE20P4	C	60	4

E20 b10 MATERIALI DURI / E20 b10 HARD MATERIALS

CODE	TYPE	Ø min	POSISTION
CSE20P1Q	S	60	1
CCE20P2Q	C	60	2
CCE20P3Q	C	60	3
CCE20P4Q	C	60	4

E20 b10 MATERIALI TECNICI / E20 b10 TECHNICAL MATERIALS

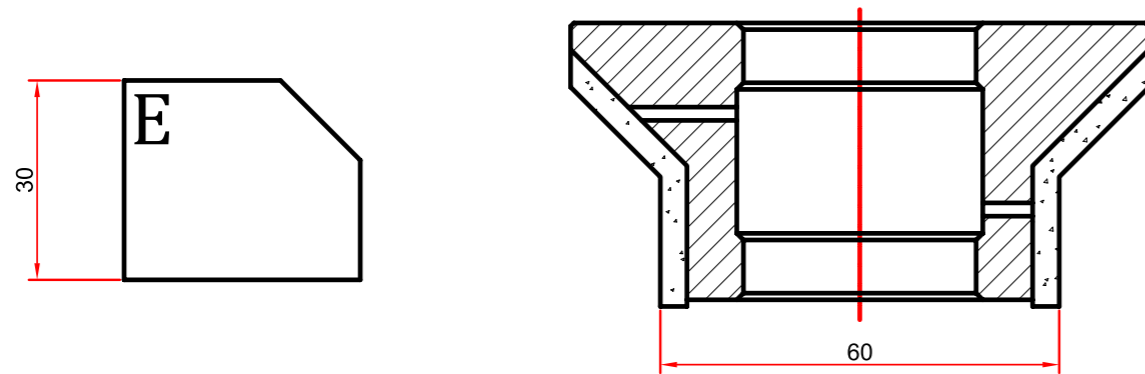
CODE	TYPE	Ø min	POSISTION
CSE20P1Y	S	60	1
CCE20P2Y	C	60	2
CCE20P3Y	C	60	3
CCE20P4Y	C	60	4

E20 b10 ELETTRUDEPOSTO / E20 b10 ELECTROPLATED

CODE	TYPE	Ø min	POSISTION
CEE20P1	E.F.	60	1
CEE20P2	E.C.	60	2
CEE20P3	E.C.	60	3
CEE20P4	E.C.	60	4

E20 b10 LUCIDANTE / E20 b10 POLISHING

CODE	TYPE	Ø min	POSISTION
CHE20P5	L	60	5
CHE20P6	L	60	6
CHE20P7	L	60	7


E30 b15 GRANITO / E30 b15 GRANITE

CODE	TYPE	Ø min	POSISTION
CSE30P1	S	60	1
CCE30P2	C	60	2
CCE30P3	C	60	3
CCE30P4	C	60	4

E30 b15 MATERIALI DURI / E30 b15 HARD MATERIALS

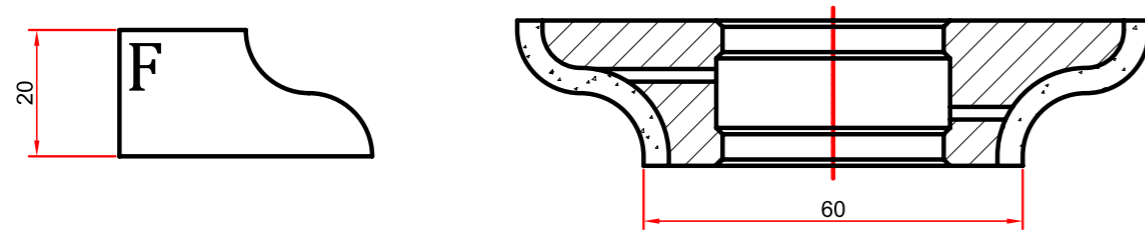
CODE	TYPE	Ø min	POSISTION
CSE30P1Q	S	60	1
CCE30P2Q	C	60	2
CCE30P3Q	C	60	3
CCE30P4Q	C	60	4

E30 b15 ELETTRORDEPOSTO / E30 b15 ELECTROPLATED

CODE	TYPE	Ø min	POSISTION
CEE30P1	E.F.	60	1
CEE30P2	E.C.	60	2
CEE30P3	E.C.	60	3
CEE30P4	E.C.	60	4

E30 b15 LUCIDANTE / E30 b15 POLISHING

CODE	TYPE	Ø min	POSISTION
CHE30P5	L	60	5
CHE30P6	L	60	6
CHE30P7	L	60	7


F20 GRANITO / F20 GRANITE

CODE	TYPE	Ø min	POSISTION
CSF20P1	S	60	1
CCF20P2	C	60	2
CCF20P3	C	60	3
CCF20P4	C	60	4

F20 MATERIALI DURI / F20 HARD MATERIALS

CODE	TYPE	Ø min	POSISTION
CSF20P1Q	S	60	1
CCF20P2Q	C	60	2
CCF20P3Q	C	60	3
CCF20P4Q	C	60	4

F20 MATERIALI TECNICI / F20 TECHNICAL MATERIALS

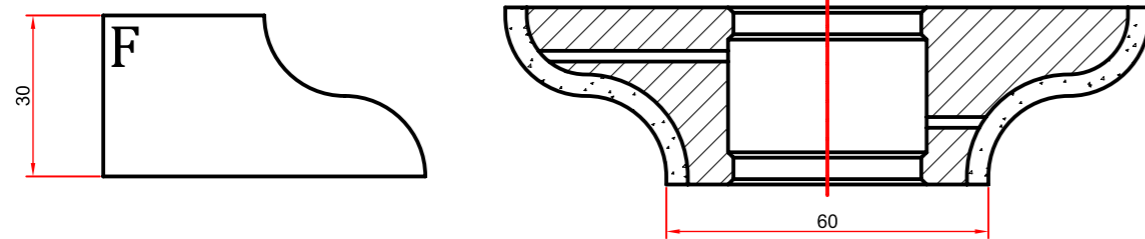
CODE	TYPE	Ø min	POSISTION
CSF20P1Y	S	60	1
CCF20P2Y	C	60	2
CCF20P3Y	C	60	3
CCF20P4Y	C	60	4

F20 ELETTRORDEPOSTO / F20 ELECTROPLATED

CODE	TYPE	Ø min	POSISTION
CEF20P1	E.F.	60	1
CEF20P2	E.C.	60	2
CEF20P3	E.C.	60	3
CEF20P4	E.C.	60	4

E30 b15 LUCIDANTE / E30 b15 POLISHING

CODE	TYPE	Ø min	POSISTION
CHF20P6	L	60	6
CHF20P7	L	60	7
CHE30P7	L	60	7


F30 GRANITO / F30 GRANITE

CODE	TYPE	Ø min	POSISTION
CSF30P1	S	60	1
CCF30P2	C	60	2
CCF30P3	C	60	3
CCF30P4	C	60	4

F30 MATERIALI DURI / F30 HARD MATERIALS

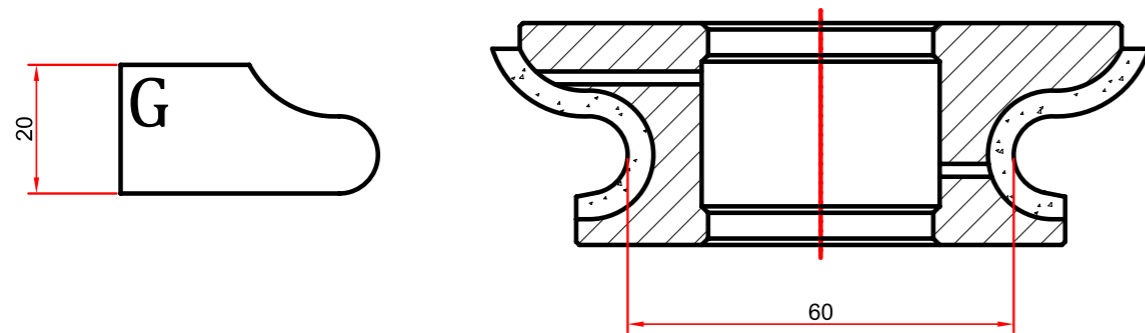
CODE	TYPE	Ø min	POSISTION
CSF30P1Q	S	60	1
CCF30P2Q	C	60	2
CCF30P3Q	C	60	3
CCF30P4Q	C	60	4

F30 ELETTRORDEPOSTO / F30 ELECTROPLATED

CODE	TYPE	Ø min	POSISTION
CEF30P1	E.F.	60	1
CEF30P2	E.C.	60	2
CEF30P3	E.C.	60	3
CEF30P4	E.C.	60	4

F30 LUCIDANTE / F30 POLISHING

CODE	TYPE	Ø min	POSISTION
CHF30P5	L	60	5
CHF30P6	L	60	6
CHF30P7	L	60	7


G20 (OGEE) GRANITO / G20 (OGEE) GRANITE

CODE	TYPE	Ø min	POSISTION
CSG20P1	S	60	1
CCG20P2	C	60	2
CCG20P3	C	60	3
CCG20P4	C	60	4

G20 (OGEE) MATERIALI DURI / G20 (OGEE) HARD MATERIALS

CODE	TYPE	Ø min	POSISTION
CSG20P1Q	S	60	1
CCG20P2Q	C	60	2
CCG20P3Q	C	60	3
CCG20P4Q	C	60	4

G20 (OGEE) MATERIALI TECNICI / G20 (OGEE) TECHNICAL MATERIALS

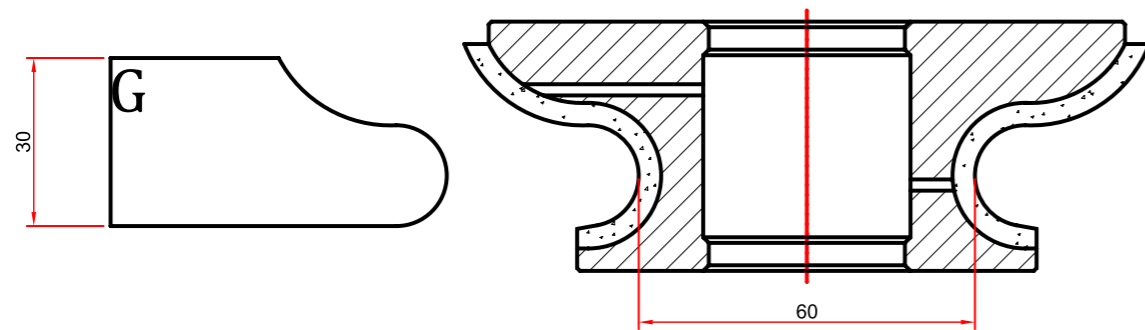
CODE	TYPE	Ø min	POSISTION
CSG20P1Y	S	60	1
CCG20P2Y	C	60	2
CCG20P3Y	C	60	3
CCG20P4Y	C	60	4

G20 (OGEE) ELETTRODEPOSTO / G20 (OGEE) ELECTROPLATED

CODE	TYPE	Ø min	POSISTION
CEG20P1	E.F.	60	1
CEG20P2	E.C.	60	2
CEG20P3	E.C.	60	3
CEG20P4	E.C.	60	4

G20 (OGEE) LUCIDANTE / G20 (OGEE) POLISHING

CODE	TYPE	Ø min	POSISTION
CHG20P5	L	60	5
CHG20P6	L	60	6
CHG20P7	L	60	7


G30 (OGEE) GRANITO / G30 (OGEE) GRANITE

CODE	TYPE	Ø min	POSISTION
CSG30P1	S	60	1
CCG30P2	C	60	2
CCG30P3	C	60	3
CCG30P4	C	60	4

G30 (OGEE) MATERIALI DURI / G30 (OGEE) HARD MATERIALS

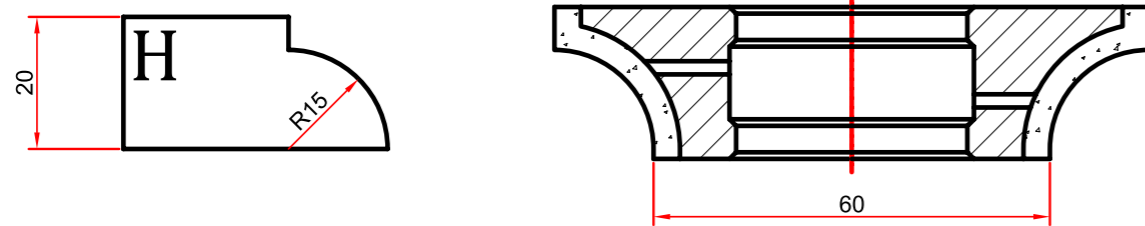
CODE	TYPE	Ø min	POSISTION
CSG30P1Q	S	60	1
CCG30P2Q	C	60	2
CCG30P3Q	C	60	3
CCG30P4Q	C	60	4

G30 (OGEE) ELETTRORDEPOSTO / G30 (OGEE) ELECTROPLATED

CODE	TYPE	Ø min	POSISTION
CEG30P1	E.F.	60	1
CEG30P2	E.C.	60	2
CEG30P3	E.C.	60	3
CEG30P4	E.C.	60	4

G30 (OGEE) LUCIDANTE / G30 (OGEE) POLISHING

CODE	TYPE	Ø min	POSISTION
CHG30P5	L	60	5
CHG30P6	L	60	6
CHG30P7	L	60	7


H20 (DUPONT) GRANITO / H20 (DUPONT) GRANITE

CODE	TYPE	Ø min	POSISTION
CSH20P1	S	60	1
CCH20P2	C	60	2
CCH20P3	C	60	3
CCH20P4	C	60	4

H20 (DUPONT) MATERIALI DURI / H20 (DUPONT) HARD MATERIALS

CODE	TYPE	Ø min	POSISTION
CSH20P1Q	S	60	1
CCH20P2Q	C	60	2
CCH20P3Q	C	60	3
CCH20P4Q	C	60	4

H20 (DUPONT) MATERIALI TECNICI / H20 (DUPONT) TECHNICAL MATERIALS

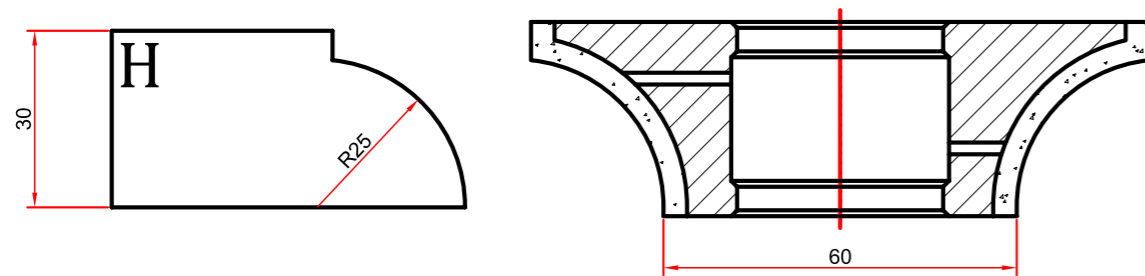
CODE	TYPE	Ø min	POSISTION
CSH20P1Y	S	60	1
CCH20P2Y	C	60	2
CCH20P3Y	C	60	3
CCH20P4Y	C	60	4

H20 (DUPONT) ELETTRODEPOSTO / H20 (DUPONT) ELECTROPLATED

CODE	TYPE	Ø min	POSISTION
CEH20P1	E.F.	60	1
CEH20P2	E.C.	60	2
CEH20P3	E.C.	60	3
CEH20P4	E.C.	60	4

H20 (DUPONT) LUCIDANTE / H20 (DUPONT) POLISHING

CODE	TYPE	Ø min	POSISTION
CHH20P5	L	60	5
CHH20P6	L	60	6
CHH20P7	L	60	7


H30 (DUPONT) GRANITO / H30 (DUPONT) GRANITE

CODE	TYPE	Ø min	POSISTION
CSH30P1	S	60	1
CCH30P2	C	60	2
CCH30P3	C	60	3
CCH30P4	C	60	4

H30 (DUPONT) MATERIALI DURI / H30 (DUPONT) HARD MATERIALS

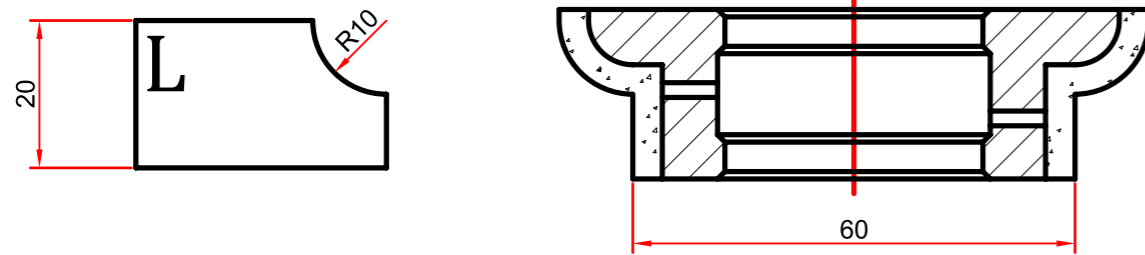
CODE	TYPE	Ø min	POSISTION
CSH30P1Q	S	60	1
CCH30P2Q	C	60	2
CCH30P3Q	C	60	3
CCH30P4Q	C	60	4

H30 (DUPONT) ELETTRORDEPOSTO / H30 (DUPONT) ELECTROPLATED

CODE	TYPE	Ø min	POSISTION
CEH30P1	E.F.	60	1
CEH30P2	E.C.	60	2
CEH30P3	E.C.	60	3
CEH30P4	E.C.	60	4

H30 (DUPONT) LUCIDANTE / H30 (DUPONT) POLISHING

CODE	TYPE	Ø min	POSISTION
CHH30P5	L	60	5
CHH30P6	L	60	6
CHH30P7	L	60	7


L20 GRANITO / L20 GRANITE

CODE	TYPE	Ø min	POSISTION
CSL20P1	S	60	1
CCL20P2	C	60	2
CCL20P3	C	60	3
CCL20P4	C	60	4

L20 MATERIALI DURI / L20 HARD MATERIALS

CODE	TYPE	Ø min	POSISTION
CSL20P1Q	S	60	1
CCL20P2Q	C	60	2
CCL20P3Q	C	60	3
CCL20P4Q	C	60	4

L20 MATERIALI TECNICI / L20 TECHNICAL MATERIALS

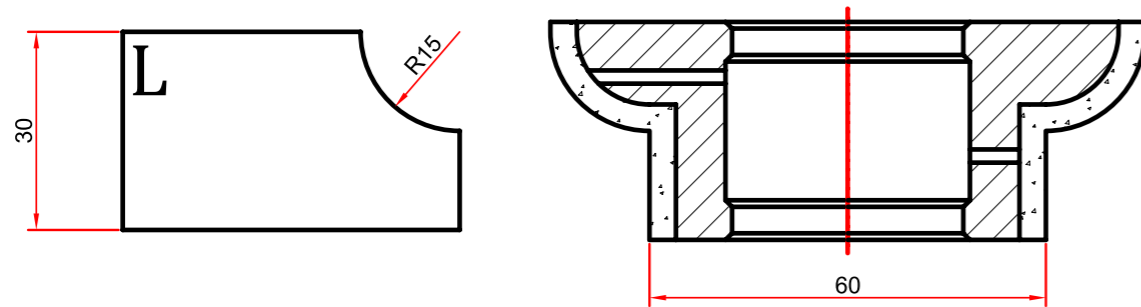
CODE	TYPE	Ø min	POSISTION
CSL20P1Y	S	60	1
CCL20P2Y	C	60	2
CCL20P3Y	C	60	3
CCL20P4Y	C	60	4

L20 ELETTRORDEPOSTO / L20 ELECTROPLATED

CODE	TYPE	Ø min	POSISTION
CEL20P1	E.F.	60	1
CEL20P2	E.C.	60	2
CEL20P3	E.C.	60	3
CEL20P4	E.C.	60	4

L20 LUCIDANTE / L20 POLISHING

CODE	TYPE	Ø min	POSISTION
CHL20P5	L	60	5
CHL20P6	L	60	6
CHL20P7	L	60	7


L30 GRANITO / L30 GRANITE

CODE	TYPE	Ø min	POSISTION
CSL30P1	S	60	1
CCL30P2	C	60	2
CCL30P3	C	60	3
CCL30P4	C	60	4

L30 MATERIALI DURI / L30 HARD MATERIALS

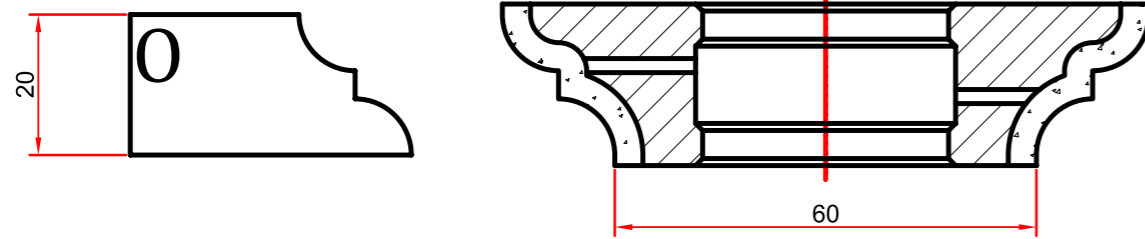
CODE	TYPE	Ø min	POSISTION
CSL30P1Q	S	60	1
CCL30P2Q	C	60	2
CCL30P3Q	C	60	3
CCL30P4Q	C	60	4

L30 ELETTRORDEPOSTO / L30 ELECTROPLATED

CODE	TYPE	Ø min	POSISTION
CEL30P1	E.F.	60	1
CEL30P2	E.C.	60	2
CEL30P3	E.C.	60	3
CEL30P4	E.C.	60	4

L30 LUCIDANTE / L30 POLISHING

CODE	TYPE	Ø min	POSISTION
CHL30P5	L	60	5
CHL30P6	L	60	6
CHL30P7	L	60	7


O20 GRANITO / O20 GRANITE

CODE	TYPE	Ø min	POSISTION
CS020P1	S	60	1
CC020P2	C	60	2
CC020P3	C	60	3
CC020P4	C	60	4

O20 MATERIALI DURI / O20 HARD MATERIALS

CODE	TYPE	Ø min	POSISTION
CS020P1Q	S	60	1
CC020P2Q	C	60	2
CC020P3Q	C	60	3
CC020P4Q	C	60	4

O20 MATERIALI TECNICI / O20 TECHNICAL MATERIALS

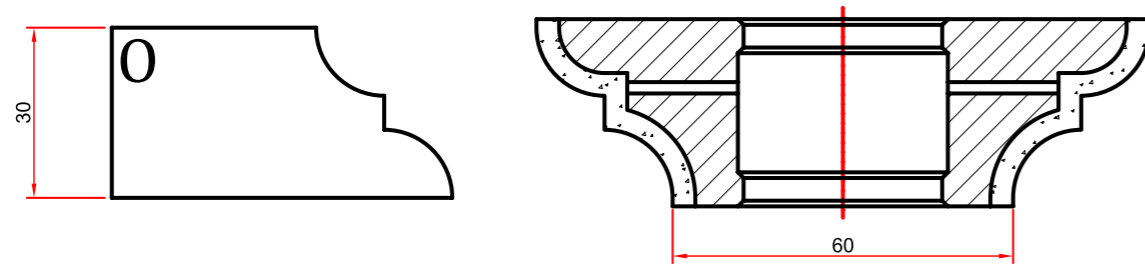
CODE	TYPE	Ø min	POSISTION
CS020P1Y	S	60	1
CC020P2Y	C	60	2
CC020P3Y	C	60	3
CC020P4Y	C	60	4

O20 ELETTRORDEPOSTO / O20 ELECTROPLATED

CODE	TYPE	Ø min	POSISTION
CE020P1	E.F.	60	1
CE020P2	E.C.	60	2
CE020P3	E.C.	60	3
CE020P4	E.C.	60	4

O20 LUCIDANTE / O20 POLISHING

CODE	TYPE	Ø min	POSISTION
CH020P5	L	60	5
CH020P6	L	60	6
CH020P7	L	60	7


O30 GRANITO / O30 GRANITE

CODE	TYPE	Ø min	POSISTION
CS030P1	S	60	1
CC030P2	C	60	2
CC030P3	C	60	3
CC030P4	C	60	4

O30 MATERIALI DURI / O30 HARD MATERIALS

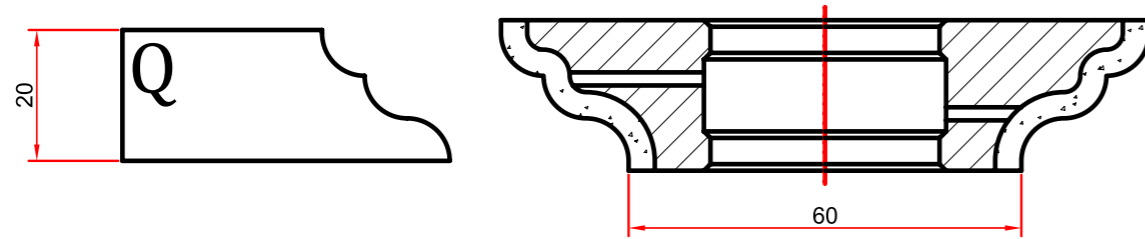
CODE	TYPE	Ø min	POSISTION
CS030P1Q	S	60	1
CC030P2Q	C	60	2
CC030P3Q	C	60	3
CC030P4Q	C	60	4

O30 ELETTRORDEPOSTO / O30 ELECTROPLATED

CODE	TYPE	Ø min	POSISTION
CE030P1	E.F.	60	1
CE030P2	E.C.	60	2
CE030P3	E.C.	60	3
CE030P4	E.C.	60	4

O30 LUCIDANTE / O30 POLISHING

CODE	TYPE	Ø min	POSISTION
CHO30P5	L	60	5
CHO30P6	L	60	6
CHO30P7	L	60	7


Q20 GRANITO / Q20 GRANITE

CODE	TYPE	Ø min	POSISTION
CSQ20P1	S	60	1
CCQ20P2	C	60	2
CCQ20P3	C	60	3
CCQ20P4	C	60	4

Q20 MATERIALI DURI / Q20 HARD MATERIALS

CODE	TYPE	Ø min	POSISTION
CSQ20P1Q	S	60	1
CCQ20P2Q	C	60	2
CCQ20P3Q	C	60	3
CCQ20P4Q	C	60	4

Q20 MATERIALI TECNICI / Q20 TECHNICAL MATERIALS

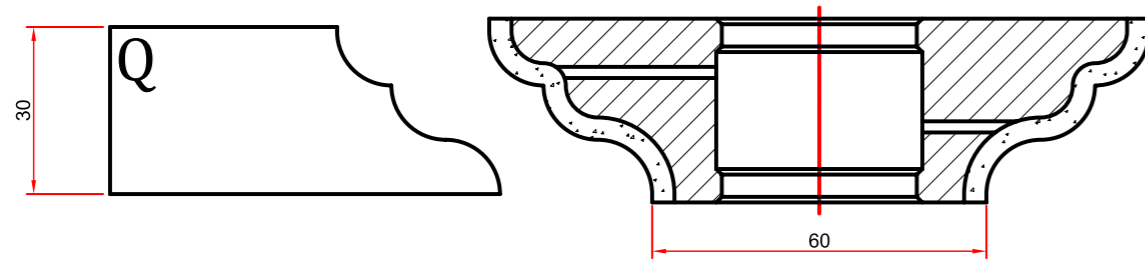
CODE	TYPE	Ø min	POSISTION
CSQ20P1Y	S	60	1
CCQ20P2Y	C	60	2
CCQ20P3Y	C	60	3
CCQ20P4Y	C	60	4

Q20 ELETTRORDEPOSTO / Q20 ELECTROPLATED

CODE	TYPE	Ø min	POSISTION
CEQ20P1	E.F.	60	1
CEQ20P2	E.C.	60	2
CEQ20P3	E.C.	60	3
CEQ20P4	E.C.	60	4

Q20 LUCIDANTE / Q20 POLISHING

CODE	TYPE	Ø min	POSISTION
CHQ20P5	L	60	5
CHQ20P6	L	60	6
CHQ20P7	L	60	7


Q30 GRANITO / Q30 GRANITE

CODE	TYPE	Ø min	POSISTION
CSQ30P1	S	60	1
CCQ30P2	C	60	2
CCQ30P3	C	60	3
CCQ30P4	C	60	4

Q30 MATERIALI DURI / Q30 HARD MATERIALS

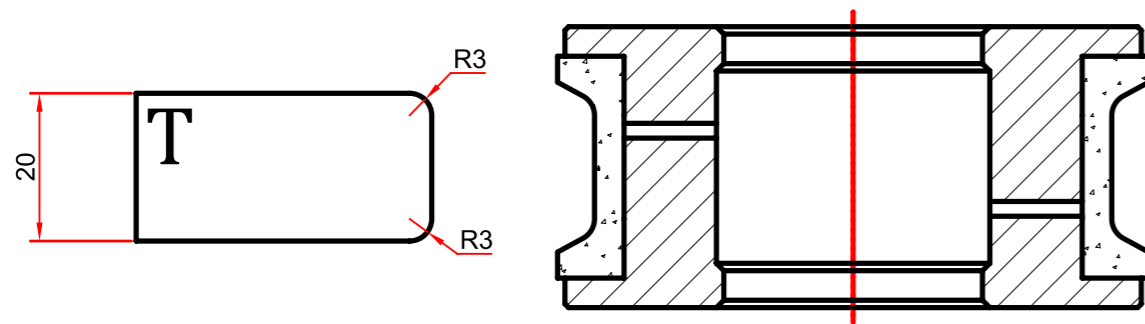
CODE	TYPE	Ø min	POSISTION
CSQ30P1Q	S	60	1
CCQ30P2Q	C	60	2
CCQ30P3Q	C	60	3
CCQ30P4Q	C	60	4

Q30 ELETTRORDEPOSTO / Q30 ELECTROPLATED

CODE	TYPE	Ø min	POSISTION
CEQ30P1	E.F.	60	1
CEQ30P2	E.C.	60	2
CEQ30P3	E.C.	60	3
CEQ30P4	E.C.	60	4

Q30 LUCIDANTE / Q30 POLISHING

CODE	TYPE	Ø min	POSISTION
CHQ30P5	L	60	5
CHQ30P6	L	60	6
CHQ30P7	L	60	7


T20 GRANITO / T20 GRANITE

CODE	TYPE	Ø min	POSISTION
CST20P1	S	60	1
CCT20P2	C	60	2
CCT20P3	C	60	3
CCT20P4	C	60	4

T20 MATERIALI DURI / T20 HARD MATERIALS

CODE	TYPE	Ø min	POSISTION
CST20P1Q	S	60	1
CCT20P2Q	C	60	2
CCT20P3Q	C	60	3
CCT20P4Q	C	60	4

T20 MATERIALI TECNICI / T20 TECHNICAL MATERIALS

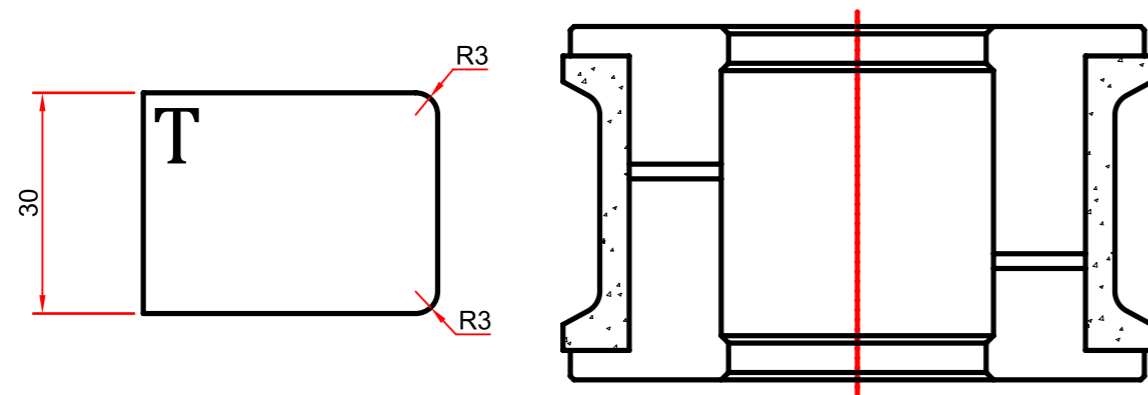
CODE	TYPE	Ø min	POSISTION
CST20P1Y	S	60	1
CCT20P2Y	C	60	2
CCT20P3Y	C	60	3
CCT20P4Y	C	60	4

T20 ELETTRORDEPOSTO / T20 ELECTROPLATED

CODE	TYPE	Ø min	POSISTION
CET20P1	E.F.	60	1
CET20P2	E.C.	60	2
CET20P3	E.C.	60	3
CET20P4	E.C.	60	4

T20 LUCIDANTE / T20 POLISHING

CODE	TYPE	Ø min	POSISTION
CHT20P5	L	60	5
CHT20P6	L	60	6
CHT20P7	L	60	7


T30 GRANITO / T30 GRANITE

CODE	TYPE	Ø min	POSISTION
CST30P1	S	60	1
CCT30P2	C	60	2
CCT30P3	C	60	3
CCT30P4	C	60	4

T30 MATERIALI DURI / T30 HARD MATERIALS

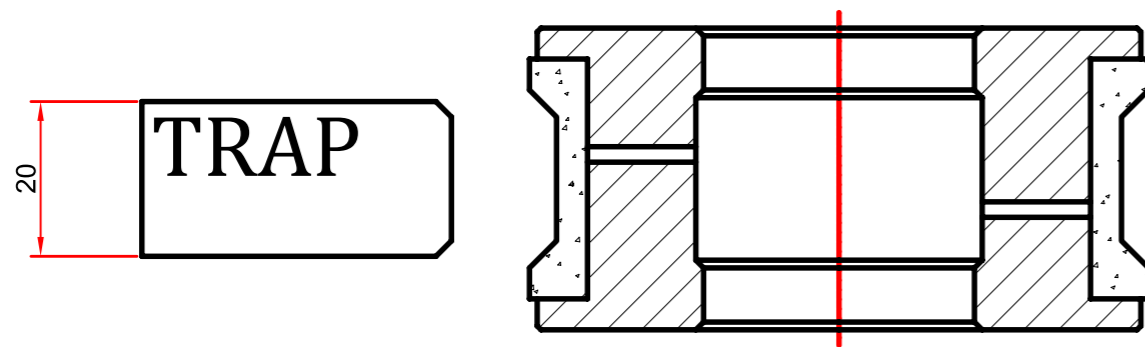
CODE	TYPE	Ø min	POSISTION
CST30P1Q	S	60	1
CCT30P2Q	C	60	2
CCT30P3Q	C	60	3
CCT30P4Q	C	60	4

T30 ELETTRORDEPOSTO / T30 ELECTROPLATED

CODE	TYPE	Ø min	POSISTION
CET30P1	E.F.	60	1
CET30P2	E.C.	60	2
CET30P3	E.C.	60	3
CET30P4	E.C.	60	4

T30 LUCIDANTE / T30 POLISHING

CODE	TYPE	Ø min	POSISTION
CHT30P5	L	60	5
CHT30P6	L	60	6
CHT30P7	L	60	7


TRAP20 GRANITO / TRAP20 GRANITE

CODE	TYPE	Ø min	POSISTION
CSTRP20P1	S	60	1
CCTRP20P2	C	60	2
CCTRP20P3	C	60	3
CCTRP20P4	C	60	4

TRAP20 MATERIALI DURI / TRAP20 HARD MATERIALS

CODE	TYPE	Ø min	POSISTION
CSTRP20P1Q	S	60	1
CCTRP20P2Q	C	60	2
CCTRP20P3Q	C	60	3
CCTRP20P4Q	C	60	4

TRAP20 MATERIALI TECNICI / TRAP20 TECHNICAL MATERIALS

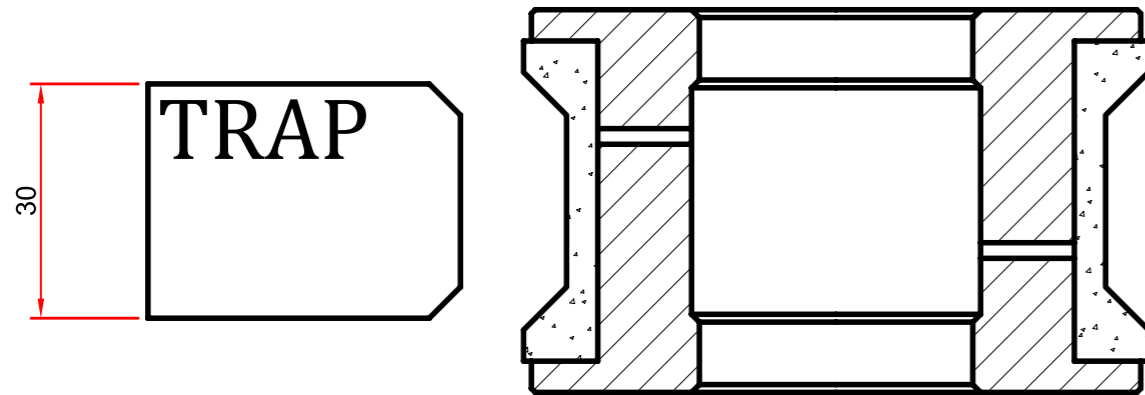
CODE	TYPE	Ø min	POSISTION
CSTRP20P1Y	S	60	1
CCTRP20P2Y	C	60	2
CCTRP20P3Y	C	60	3
CCTRP20P4Y	C	60	4

TRAP20 ELETTRODEPOSTO / TRAP20 ELECTROPLATED

CODE	TYPE	Ø min	POSISTION
CETRP20P1	E.F.	60	1
CETRP20P2	E.C.	60	2
CETRP20P3	E.C.	60	3
CETRP20P4	E.C.	60	4

TRAP20 LUCIDANTE / TRAP20 POLISHING

CODE	TYPE	Ø min	POSISTION
CHTRP20P5	L	60	5
CHTRP20P6	L	60	6
CHTRP20P7	L	60	7


TRAP30 GRANITO / TRAP30 GRANITE

CODE	TYPE	Ø min	POSISTION
CSTRP30P1	S	60	1
CCTRP30P2	C	60	2
CCTRP30P3	C	60	3
CCTRP30P4	C	60	4

TRAP30 MATERIALI DURI / TRAP30 HARD MATERIALS

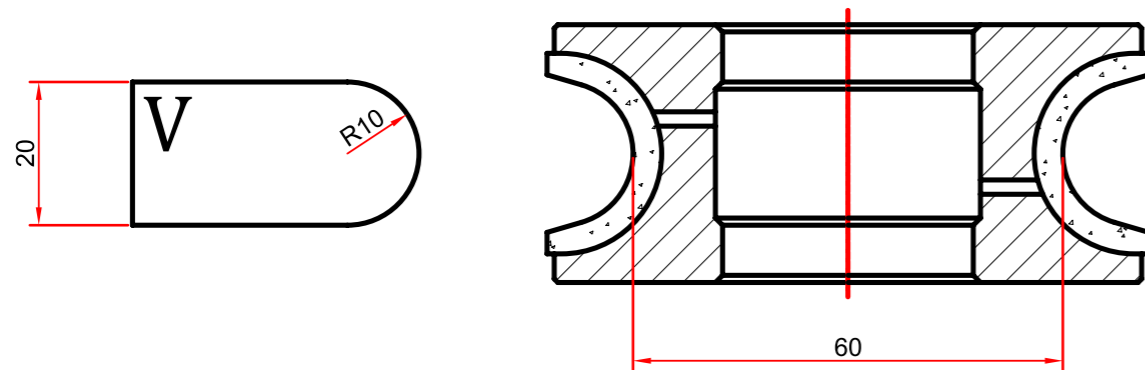
CODE	TYPE	Ø min	POSISTION
CSTRP30P1Q	S	60	1
CCTRP30P2Q	C	60	2
CCTRP30P3Q	C	60	3
CCTRP30P4Q	C	60	4

TRAP30 ELETTRORDEPOSTO / TRAP30 ELECTROPLATED

CODE	TYPE	Ø min	POSISTION
CETRP30P1	S	60	1
CETRP30P2	C	60	2
CETRP30P3	C	60	3
CETRP30P4	C	60	4

TRAP30 LUCIDANTE / TRAP30 POLISHING

CODE	TYPE	Ø min	POSISTION
CHTRP30P5	L	60	5
CHTRP30P6	L	60	6
CHTRP30P7	L	60	7


V20 GRANITO / V20 GRANITE

CODE	TYPE	Ø min	POSISTION
CSV20P1	S	60	1
CCV20P2	C	60	2
CCV20P3	C	60	3
CCV20P4	C	60	4

V20 MATERIALI DURI / V20 HARD MATERIALS

CODE	TYPE	Ø min	POSISTION
CSV20P1Q	S	60	1
CCV20P2Q	C	60	2
CCV20P3Q	C	60	3
CCV20P4Q	C	60	4

V20 MATERIALI TECNICI / V20 TECHNICAL MATERIALS

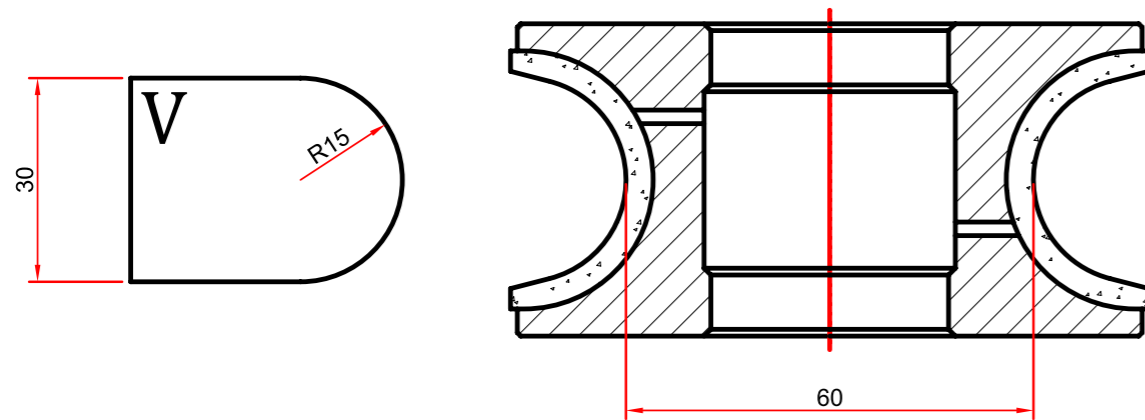
CODE	TYPE	Ø min	POSISTION
CSV20P1Y	S	60	1
CCV20P2Y	C	60	2
CCV20P3Y	C	60	3
CCV20P4Y	C	60	4

V20 ELETTRORDEPOSTO / V20 ELECTROPLATED

CODE	TYPE	Ø min	POSISTION
CEV20P1	E.F.	60	1
CEV20P2	E.C.	60	2
CEV20P3	E.C.	60	3
CEV20P4	E.C.	60	4

V20 LUCIDANTE / V20 POLISHING

CODE	TYPE	Ø min	POSISTION
CHV20P5	L	60	5
CHV20P6	L	60	6
CHV20P7	L	60	7


V30 GRANITO / V30 GRANITE

CODE	TYPE	Ø min	POSISTION
CSV30P1	S	60	1
CCV30P2	C	60	2
CCV30P3	C	60	3
CCV30P4	C	60	4

V30 MATERIALI DURI / V30 HARD MATERIALS

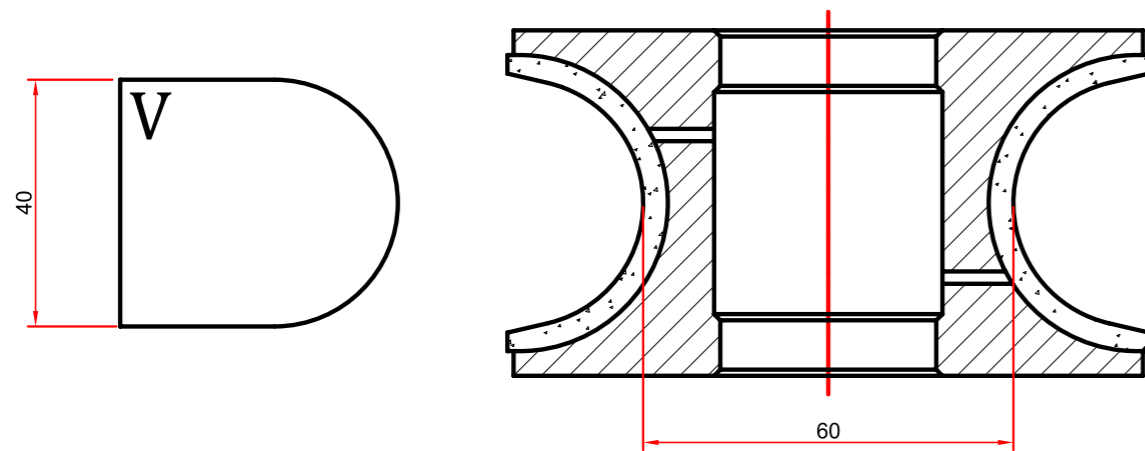
CODE	TYPE	Ø min	POSISTION
CSV30P1Q	S	60	1
CCV30P2Q	C	60	2
CCV30P3Q	C	60	3
CCV30P4Q	C	60	4

V30 ELETTRODEPOSTO / V30 ELECTROPLATED

CODE	TYPE	Ø min	POSISTION
CEV30P1	E.F.	60	1
CEV30P2	E.C.	60	2
CEV30P3	E.C.	60	3
CEV30P4	E.C.	60	4

V30 LUCIDANTE / V30 POLISHING

CODE	TYPE	Ø min	POSISTION
CHV30P5	L	60	5
CHV30P6	L	60	6
CHV30P7	L	60	7


V40 GRANITO / V40 GRANITE

CODE	TYPE	Ø min	POSISTION
CSV40P1	S	60	1
CCV40P2	C	60	2
CCV40P3	C	60	3
CCV40P4	C	60	4

V40 MATERIALI DURI / V40 HARD MATERIALS

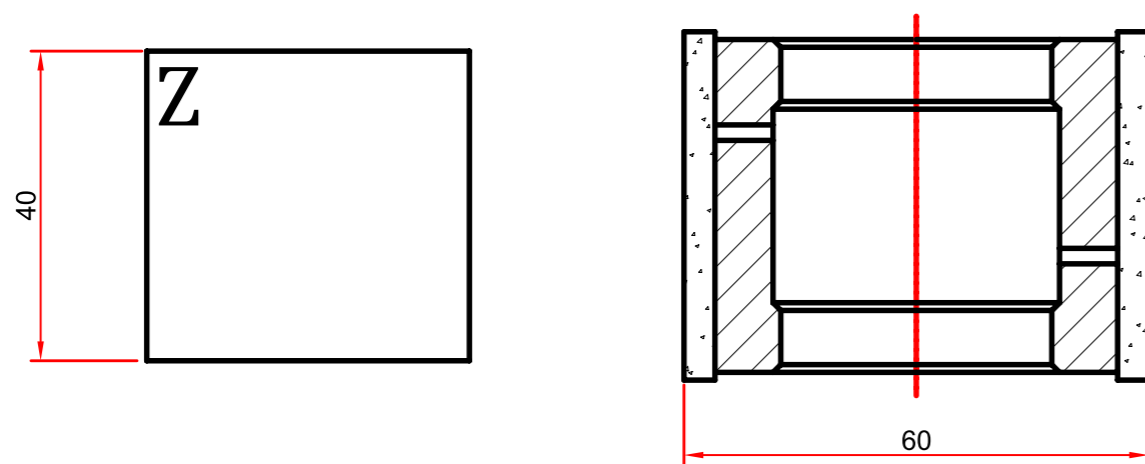
CODE	TYPE	Ø min	POSISTION
CSV40P1Q	S	60	1
CCV40P2Q	C	60	2
CCV40P3Q	C	60	3
CCV40P4Q	C	60	4

V40 ELETTRORDEPOSTO / V40 ELECTROPLATED

CODE	TYPE	Ø min	POSISTION
CEV40P1	E.F.	60	1
CEV40P2	E.C.	60	2
CEV40P3	E.C.	60	3
CEV40P4	E.C.	60	4

V40 LUCIDANTE / V40 POLISHING

CODE	TYPE	Ø min	POSISTION
CHV40P5	L	60	5
CHV40P6	L	60	6
CHV40P7	L	60	7


Z45 GRANITO / Z45 GRANITE

CODE	TYPE	Ø min	POSISTION
CSZ45P1	S	60	1
CCZ45P2	C	60	2
CCZ45P3	C	60	3
CCZ45P4	C	60	4

Z45 MATERIALI DURI / Z45 HARD MATERIALS

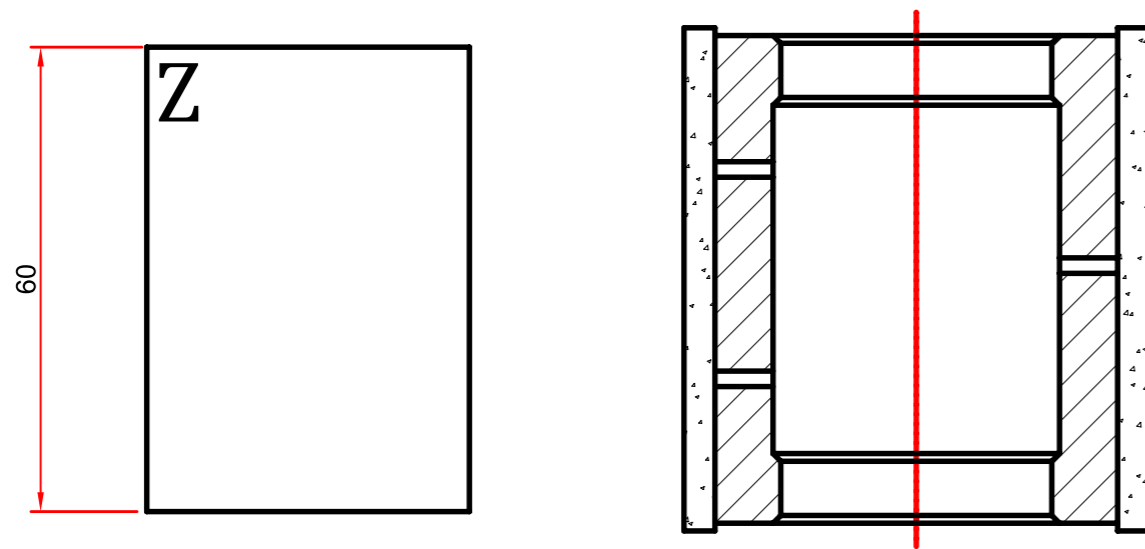
CODE	TYPE	Ø min	POSISTION
CSZ45P1	S	60	1
CCZ45P2	C	60	2
CCZ45P3	C	60	3
CCZ45P4	C	60	4

Z45 ELETTRORDEPOSTO / Z45 ELECTROPLATED

CODE	TYPE	Ø min	POSISTION
CEZ45P1	E.F.	60	1
CEZ45P2	E.C.	60	2
CEZ45P3	E.C.	60	3
CEZ45P4	E.C.	60	4

Z45 LUCIDANTE / Z45 POLISHING

CODE	TYPE	Ø min	POSISTION
CHZ45P5	L	60	5
CHZ45P6	L	60	6
CHZ45P7	L	60	7


Z65 GRANITO / Z65 GRANITE

CODE	TYPE	Ø min	POSISTION
CSZ65P1	S	60	1
CCZ65P2	C	60	2
CCZ65P3	C	60	3
CCZ65P4	C	60	4

Z65 MATERIALI DURI / Z65 HARD MATERIALS

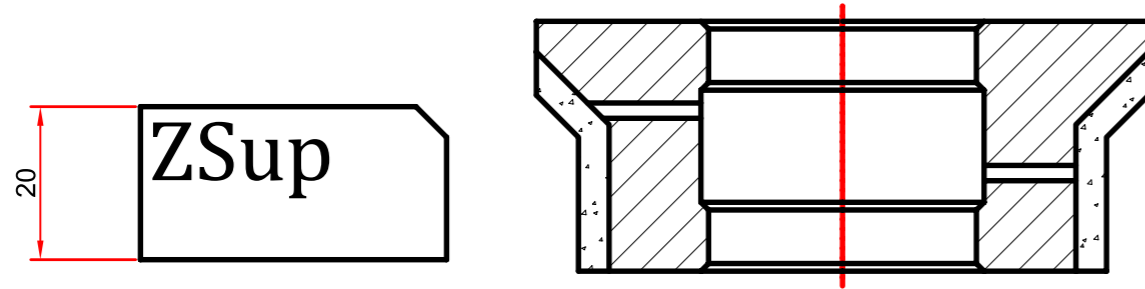
CODE	TYPE	Ø min	POSISTION
CSZ65P1	S	60	1
CCZ65P2	C	60	2
CCZ65P3	C	60	3
CCZ65P4	C	60	4

Z65 ELETTRORDEPOSTO / Z65 ELECTROPLATED

CODE	TYPE	Ø min	POSISTION
CEZ65P1	E.F.	60	1
CEZ65P2	E.C.	60	2
CEZ65P3	E.C.	60	3
CEZ65P4	E.C.	60	4

Z65 LUCIDANTE / Z65 POLISHING

CODE	TYPE	Ø min	POSISTION
CHZ65P5	L	60	5
CHZ65P6	L	60	6
CHZ65P7	L	60	7


ZSup20 GRANITO / ZSup20 GRANITE

CODE	TYPE	Ø min	POSISTION
CSZSU20P1	S	60	1
CCZSU20P2	C	60	2
CCZSU20P3	C	60	3
CCZSU20P4	C	60	4

ZSup20 MATERIALI DURI / ZSup20 HARD MATERIALS

CODE	TYPE	Ø min	POSISTION
CSZSU20P1Q	S	60	1
CCZSU20P2Q	C	60	2
CCZSU20P3Q	C	60	3
CCZSU20P4Q	C	60	4

ZSup20 MATERIALI TECNICI / ZSup20 TECHNICAL MATERIALS

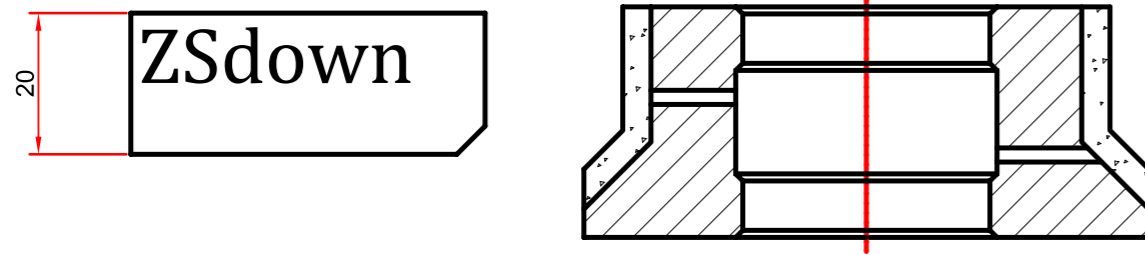
CODE	TYPE	Ø min	POSISTION
CSZSU20P1Y	S	60	1
CCZSU20P2Y	C	60	2
CCZSU20P3Y	C	60	3
CCZSU20P4Y	C	60	4

ZSup20 ELETTRODEPOSTO / ZSup20 ELECTROPLATED

CODE	TYPE	Ø min	POSISTION
CEZSU20P1	E.F.	60	1
CEZSU20P2	E.C.	60	2
CEZSU20P3	E.C.	60	3
CEZSU20P4	E.C.	60	4

ZSup20 LUCIDANTE / ZSup20 POLISHING

CODE	TYPE	Ø min	POSISTION
CHZSU20P5	L	60	5
CHZSU20P6	L	60	6
CHZSU20P7	L	60	7


ZSdown20 GRANITO / ZSdown20 GRANITE

CODE	TYPE	Ø min	POSISTION
CSZSD20P1	S	60	1
CCZSD20P2	C	60	2
CCZSD20P3	C	60	3
CCZSD20P4	C	60	4

ZSdown20 MATERIALI DURI / ZSdown20 HARD MATERIALS

CODE	TYPE	Ø min	POSISTION
CSZSD20P1Q	S	60	1
CCZSD20P2Q	C	60	2
CCZSD20P3Q	C	60	3
CCZSD20P4Q	C	60	4

ZSdown20 MATERIALI TECNICI / ZSdown20 TECHNICAL MATERIALS

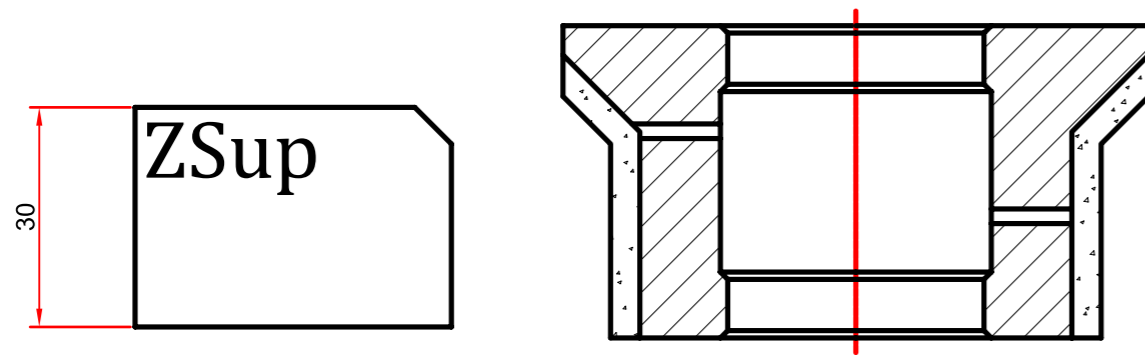
CODE	TYPE	Ø min	POSISTION
CSZSD20P1Y	S	60	1
CCZSD20P2Y	C	60	2
CCZSD20P3Y	C	60	3
CCZSD20P4Y	C	60	4

ZSdown20 ELETTRODEPOSTO / ZSdown20 ELECTROPLATED

CODE	TYPE	Ø min	POSISTION
CEZSD20P1	E.F.	60	1
CEZSD20P2	E.C.	60	2
CEZSD20P3	E.C.	60	3
CEZSD20P4	E.C.	60	4

ZSdown20 LUCIDANTE / ZSdown20 POLISHING

CODE	TYPE	Ø min	POSISTION
CHZSD20P5	L	60	5
CHZSD20P6	L	60	6
CHZSD20P7	L	60	7


ZSup30 GRANITO / ZSup30 GRANITE

CODE	TYPE	Ø min	POSISTION
CSZSU30P1	S	60	1
CCZSU30P2	C	60	2
CCZSU30P3	C	60	3
CCZSU30P4	C	60	4

ZSup30 MATERIALI DURI / ZSup30 HARD MATERIALS

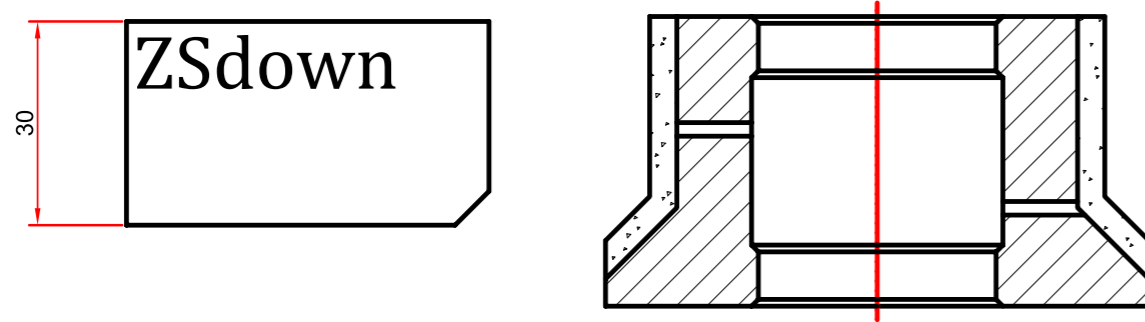
CODE	TYPE	Ø min	POSISTION
CSZSU30P1Q	S	60	1
CCZSU30P2Q	C	60	2
CCZSU30P3Q	C	60	3
CCZSU30P4Q	C	60	4

ZSup30 ELETTRODEPOSTO / ZSup30 ELECTROPLATED

CODE	TYPE	Ø min	POSISTION
CEZSU30P1	E.F.	60	1
CEZSU30P2	E.C.	60	2
CEZSU30P3	E.C.	60	3
CEZSU30P4	E.C.	60	4

ZSup30 LUCIDANTE / ZSup30 POLISHING

CODE	TYPE	Ø min	POSISTION
CHZSU30P5	L	60	5
CHZSU30P6	L	60	6
CHZSU30P7	L	60	7


ZSdown30 GRANITO / ZSdown30 GRANITE

CODE	TYPE	Ø min	POSISTION
CSZSD30P1	S	60	1
CCZSD30P2	C	60	2
CCZSD30P3	C	60	3
CCZSD30P4	C	60	4

ZSdown30 MATERIALI DURI / ZSdown30 HARD MATERIALS

CODE	TYPE	Ø min	POSISTION
CSZSD30P1Q	S	60	1
CCZSD30P2Q	C	60	2
CCZSD30P3Q	C	60	3
CCZSD30P4Q	C	60	4

ZSdown30 ELETTRODEPOSTO / ZSdown30 ELECTROPLATED

CODE	TYPE	Ø min	POSISTION
CEZSD30P1	E.F.	60	1
CEZSD30P2	E.C.	60	2
CEZSD30P3	E.C.	60	3
CEZSD30P4	E.C.	60	4

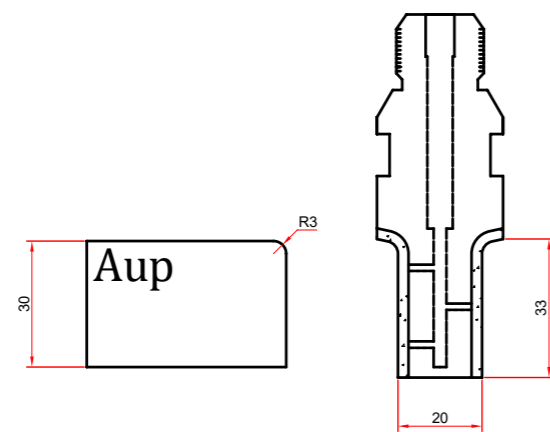
ZSdown30 LUCIDANTE / ZSdown30 POLISHING

CODE	TYPE	Ø min	POSISTION
CHZSD30P5	L	60	5
CHZSD30P6	L	60	6
CHZSD30P7	L	60	7

4.2



FRESE CNC
CNC ROUTERS


A30up r3 GRANITO / A30up r3 GRANITE

CODE	TYPE	Ø min	POSISTION
CFCA30UR3P1	C	20	1
CFCA30UR3P2	C	20	2
CFCA30UR3P3	C	20	3
CFCA30UR3P4	C	20	4

A30up r3 MATERIALI DURI / A30up r3 HARD MATERIALS

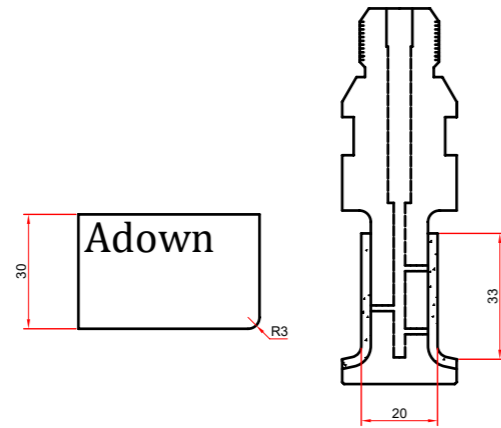
CODE	TYPE	Ø min	POSISTION
CFCA30UR3P1	C	20	1
CFCA30UR3P2	C	20	2
CFCA30UR3P3	C	20	3
CFCA30UR3P4	C	20	4

A30up r3 MATERIALI TECNICI / A30up r3 TECHNICAL MATERIALS

CODE	TYPE	Ø min	POSISTION
CFCA30UR3P1Y	C	20	1
CFCA30UR3P2Y	C	20	2
CFCA30UR3P3Y	C	20	3
CFCA30UR3P4Y	C	20	4

A30up r3 LUCIDANTE / A30up r3 POLISHING

CODE	TYPE	Ø min	POSISTION
CFHA30UR3P5	L	20	5
CFHA30UR3P6	L	20	6
CFHA30UR3P7	L	20	7


A30down r3 GRANITO / A30down r3 GRANITE

CODE	TYPE	Ø min	POSISTION
CFCA30DR3P1	C	20	1
CFCA30DR3P2	C	20	2
CFCA30DR3P3	C	20	3
CFCA30DR3P4	C	20	4

A30down r3 MATERIALI DURI / A30down r3 HARD MATERIALS

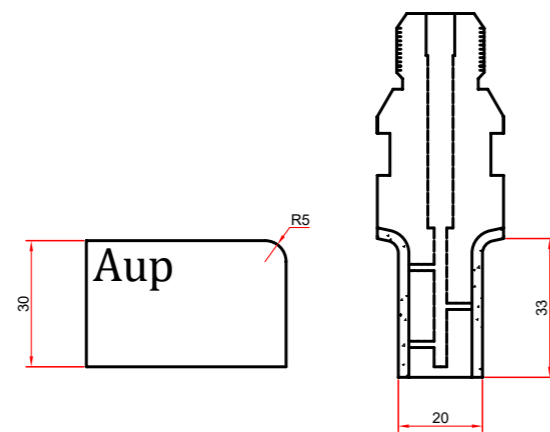
CODE	TYPE	Ø min	POSISTION
CFCA30DR3P1Q	C	20	1
CFCA30DR3P2Q	C	20	2
CFCA30DR3P3Q	C	20	3
CFCA30DR3P4Q	C	20	4

A30down r3 MATERIALI TECNICI / A30down r3 TECHNICAL MATERIALS

CODE	TYPE	Ø min	POSISTION
CFCA30DR3P1Y	C	20	1
CFCA30DR3P2Y	C	20	2
CFCA30DR3P3Y	C	20	3
CFCA30DR3P4Y	C	20	4

A30down r3 LUCIDANTE / A30down r3 POLISHING

CODE	TYPE	Ø min	POSISTION
CFHA30DR3P5	L	20	5
CFHA30DR3P6	L	20	6
CFHA30DR3P7	L	20	7


A30up r5 GRANITO / A30up r5 GRANITE

CODE	TYPE	Ø min	POSISTION
CFCA30UR5P1	C	20	1
CFCA30UR5P2	C	20	2
CFCA30UR5P3	C	20	3
CFCA30UR5P4	C	20	4

A30up r5 MATERIALI DURI / A30up r5 HARD MATERIALS

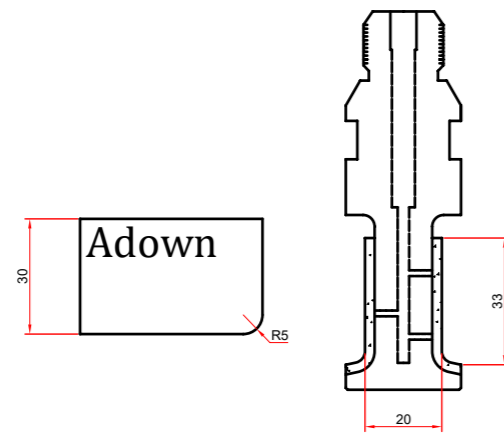
CODE	TYPE	Ø min	POSISTION
CFCA30UR5P1Q	C	20	1
CFCA30UR5P2Q	C	20	2
CFCA30UR5P3Q	C	20	3
CFCA30UR5P4Q	C	20	4

A30up r5 MATERIALI TECNICI / A30up r5 TECHNICAL MATERIALS

CODE	TYPE	Ø min	POSISTION
CFCA30UR5P1Y	C	20	1
CFCA30UR5P2Y	C	20	2
CFCA30UR5P3Y	C	20	3
CFCA30UR5P4Y	C	20	4

A30UP r5 LUCIDANTE / A30UP r5 POLISHING

CODE	TYPE	Ø min	POSISTION
CFHA30UR5P5	L	20	5
CFHA30UR5P6	L	20	6
CFHA30UR5P7	L	20	7


A30down r5 GRANITO / A30down r5 GRANITE

CODE	TYPE	Ø min	POSISTION
CFCA30DR5P1	C	20	1
CFCA30DR5P2	C	20	2
CFCA30DR5P3	C	20	3
CFCA30DR5P4	C	20	4

A30down r5 MATERIALI DURI / A30down r5 HARD MATERIALS

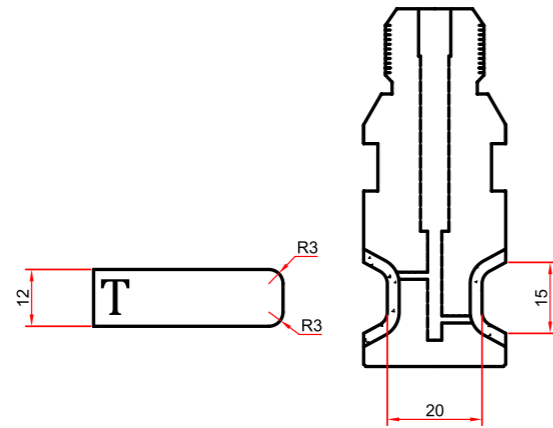
CODE	TYPE	Ø min	POSISTION
CFCA30UR5P1Q	C	20	1
CFCA30UR5P2Q	C	20	2
CFCA30UR5P3Q	C	20	3
CFCA30UR5P4Q	C	20	4

A30down r5 MATERIALI TECNICI / A30down r5 TECHNICAL MATERIALS

CODE	TYPE	Ø min	POSISTION
CFCA30DR5P1Y	C	20	1
CFCA30DR5P2Y	C	20	2
CFCA30DR5P3Y	C	20	3
CFCA30DR5P4Y	C	20	4

A30down r5 LUCIDANTE / A30down r5 POLISHING

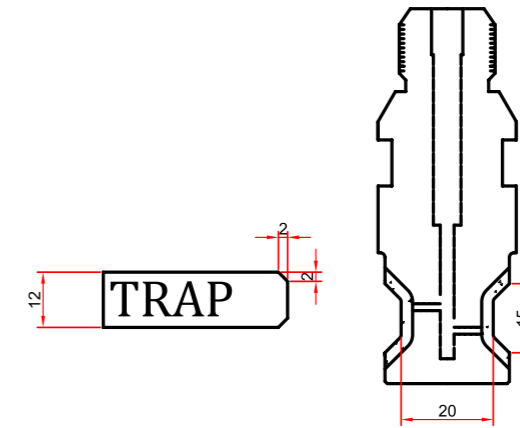
CODE	TYPE	Ø min	POSISTION
CFHA30DR5P5	L	20	5
CFHA30DR5P6	L	20	6
CFHA30DR5P7	L	20	7


T12 MATERIALI TECNICI / T12 TECHNICAL MATERIALS

CODE	TYPE	Ø min	POSISTION
CFCT12P1Y	C	20	1
CFCT12P2Y	C	20	2
CFCT12P3Y	C	20	3
CFCT12P4Y	C	20	4

T12 LUCIDANTE / T12 POLISHING

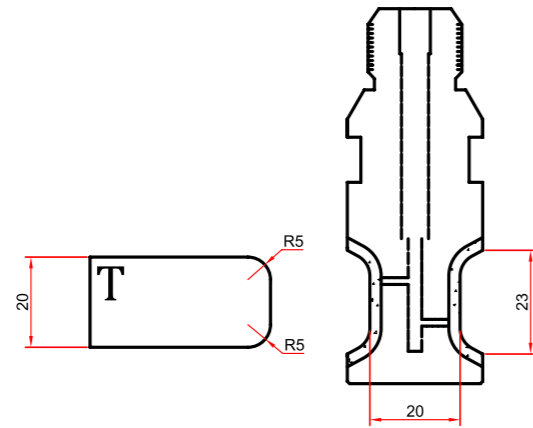
CODE	TYPE	Ø min	POSISTION
CFHT12P5	L	20	5
CFHT12P6	L	20	6
CFHT12P7	L	20	7


TRAP12 MATERIALI TECNICI / TRAP12 TECHNICAL MATERIALS

CODE	TYPE	Ø min	POSISTION
CFCTRP12P1Y	C	20	1
CFCTRP12P2Y	C	20	2
CFCTRP12P3Y	C	20	3
CFCTRP12P4Y	C	20	4

TRAP12 LUCIDANTE / TRAP12 POLISHING

CODE	TYPE	Ø min	POSISTION
CFHTRP12P5	L	20	5
CFHTRP12P6	L	20	6
CFHTRP12P7	L	20	7


T20 r5 GRANITO / T20 r5 GRANITO

CODE	TYPE	Ø min	POSISTION
CFCT20R5P1	C	20	1
CFCT20R5P2	C	20	2
CFCT20R5P3	C	20	3
CFCT20R5P4	C	20	4

T20 r5 MATERIALI DURI / T20 r5 HARD MATERIALS

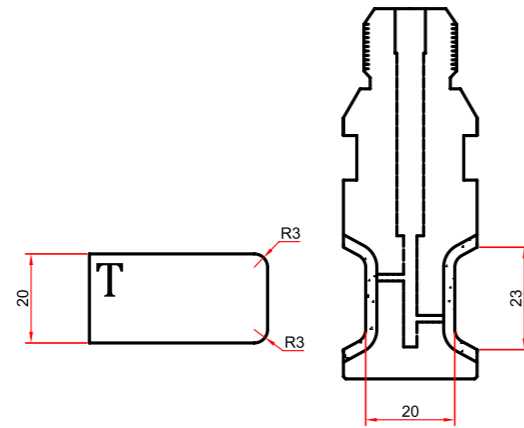
CODE	TYPE	Ø min	POSISTION
CFCT20R5P1Q	C	20	1
CFCT20R5P2Q	C	20	2
CFCT20R5P3Q	C	20	3
CFCT20R5P4Q	C	20	4

T20 r5 MATERIALI TECNICI / T20 r5 TECHNICAL MATERIALS

CODE	TYPE	Ø min	POSISTION
CFCT20R5P1Y	C	20	1
CFCT20R5P2Y	C	20	2
CFCT20R5P3Y	C	20	3
CFCT20R5P4Y	C	20	4

T20 r5 LUCIDANTE / T20 r5 POLISHING

CODE	TYPE	Ø min	POSISTION
CFHT20R5P5	L	20	5
CFHT20R5P6	L	20	6
CFHT20R5P7	L	20	7


T20 r3 GRANITO / T20 r3 GRANITO

CODE	TYPE	Ø min	POSISTION
CFCT20R3P1	C	20	1
CFCT20R3P2	C	20	2
CFCT20R3P3	C	20	3
CFCT20R3P4	C	20	4

T20 r3 MATERIALI DURI / T20 r3 MATERIALI DURI / T20 r3 HARD MATERIALS

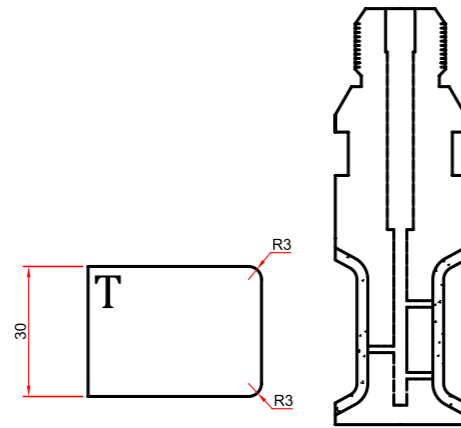
CODE	TYPE	Ø min	POSISTION
CFCT20R3P1Q	C	20	1
CFCT20R3P2Q	C	20	2
CFCT20R3P3Q	C	20	3
CFCT20R3P4Q	C	20	4

T20 r3 MATERIALI TECNICI / T20 r3 TECHNICAL MATERIALS

CODE	TYPE	Ø min	POSISTION
CFCA30DR5P1Y	C	20	1
CFCA30DR5P2Y	C	20	2
CFCA30DR5P3Y	C	20	3
CFCA30DR5P4Y	C	20	4

T20 r3 LUCIDANTE / T20 r3 POLISHING

CODE	TYPE	Ø min	POSISTION
CFHA30DR5P5	L	20	5
CFHA30DR5P6	L	20	6
CFHA30DR5P7	L	20	7


T30 r3 GRANITO / T30 r3 GRANITO

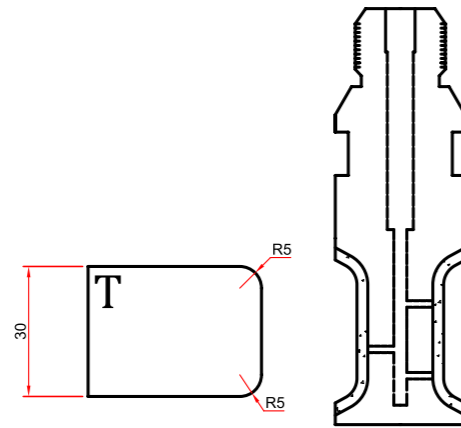
CODE	TYPE	Ø min	POSISTION
CFCT30R3P1	C	20	1
CFCT30R3P2	C	20	2
CFCT30R3P3	C	20	3
CFCT30R3P4	C	20	4

T30 r3 MATERIALI DURI / T30 r3 HARD MATERIALS

CODE	TYPE	Ø min	POSISTION
CFCT30R3P1Q	C	20	1
CFCT30R3P2Q	C	20	2
CFCT30R3P3Q	C	20	3
CFCT30R3P4Q	C	20	4

T30 r3 LUCIDANTE / T30 r3 POLISHING

CODE	TYPE	Ø min	POSISTION
CFHT30R3P5	L	20	5
CFHT30R3P6	L	20	6
CFHT30R3P7	L	20	7


T30 r5 GRANITO / T30 r5 GRANITO

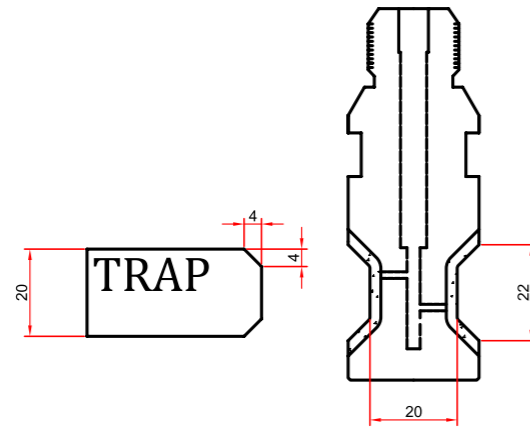
CODE	TYPE	Ø min	POSISTION
CFCT30R5P1	C	20	1
CFCT30R5P2	C	20	2
CFCT30R5P3	C	20	3
CFCT30R5P4	C	20	4

T30 r5 MATERIALI DURI / T30 r5 HARD MATERIALS

CODE	TYPE	Ø min	POSISTION
CFCT30R5P1Q	C	20	1
CFCT30R5P2Q	C	20	2
CFCT30R5P3Q	C	20	3
CFCT30R5P4Q	C	20	4

T30 r5 LUCIDANTE / T30 r5 POLISHING

CODE	TYPE	Ø min	POSISTION
CFHT30R5P5	L	20	5
CFHT30R5P6	L	20	6
CFHT30R5P7	L	20	7


TRAP20 GRANITO / TRAP20 GRANITO

CODE	TYPE	Ø min	POSISTION
CFCTRP20P1	C	20	1
CFCTRP20P2	C	20	2
CFCTRP20P3	C	20	3
CFCTRP20P4	C	20	4

TRAP20 MATERIALI DURI / TRAP20 HARD MATERIALS

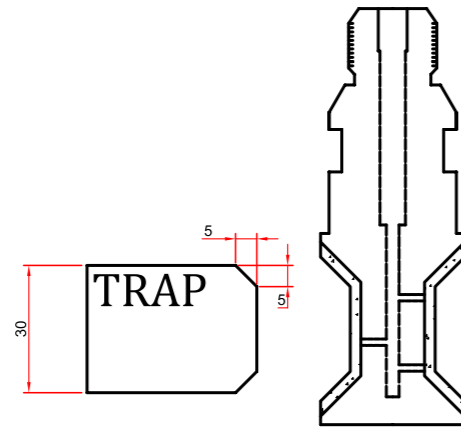
CODE	TYPE	Ø min	POSISTION
CFCTRP20P1Q	C	20	1
CFCTRP20P2Q	C	20	2
CFCTRP20P3Q	C	20	3
CFCTRP20P4Q	C	20	4

TRAP20 MATERIALI TECNICI / TRAP20 TECHNICAL MATERIALS

CODE	TYPE	Ø min	POSISTION
CFCTRP20P1Y	C	20	1
CFCTRP20P2Y	C	20	2
CFCTRP20P3Y	C	20	3
CFCTRP20P4Y	C	20	4

TRAP20 LUCIDANTE / TRAP20 POLISHING

CODE	TYPE	Ø min	POSISTION
CFHTRP20P5	L	20	5
CFHTRP20P6	L	20	6
CFHTRP20P7	L	20	7


TRAP30 GRANITO / TRAP30 GRANITO

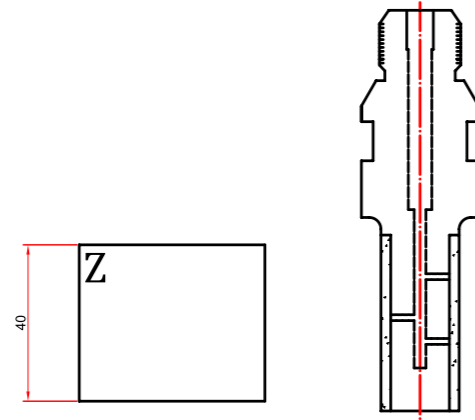
CODE	TYPE	Ø min	POSISTION
CFCTRP30P1	C	20	1
CFCTRP30P2	C	20	2
CFCTRP30P3	C	20	3
CFCTRP30P4	C	20	4

TRAP30 MATERIALI DURI / TRAP30 HARD MATERIALS

CODE	TYPE	Ø min	POSISTION
CFCTRP30P1Q	C	20	1
CFCTRP30P2Q	C	20	2
CFCTRP30P3Q	C	20	3
CFCTRP30P4Q	C	20	4

TRAP30 LUCIDANTE / TRAP30 POLISHING

CODE	TYPE	Ø min	POSISTION
CFHTRP30P5	L	20	5
CFHTRP30P6	L	20	6
CFHTRP30P7	L	20	7

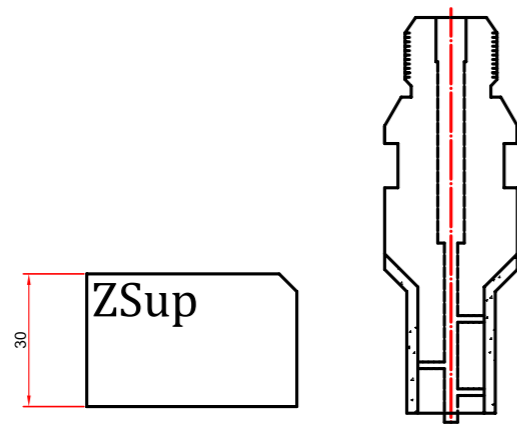


Z45 GRANITO / Z45 GRANITO

CODE	TYPE	Ø min	POSISTION
CFCZ45P1	C	20	1
CFCZ45P2	C	20	2
CFCZ45P3	C	20	3
CFCZ45P4	C	20	4

Z45 LUCIDANTE / Z45 POLISHING

CODE	TYPE	Ø min	POSISTION
CFHZ45P5	L	20	5
CFHZ45P6	L	20	6
CFHZ45P7	L	20	7


ZS30up GRANITO / ZS30up r3 GRANITO

CODE	TYPE	Ø min	POSISTION
CFCZS30UP1	C	20	1
CFCZS30UP2	C	20	2
CFCZS30UP3	C	20	3
CFCZS30UP4	C	20	4

ZS30up MATERIALI DURI / ZS30up r3 HARD MATERIALS

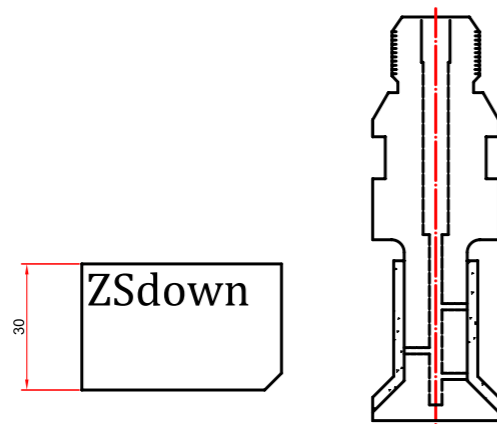
CODE	TYPE	Ø min	POSISTION
CFCZS30UP1Q	C	20	1
CFCZS30UP2Q	C	20	2
CFCZS30UP3Q	C	20	3
CFCZS30UP4Q	C	20	4

ZS30up MATERIALI TECNICI / ZS30up r3 TECHNICAL MATERIALS

CODE	TYPE	Ø min	POSISTION
CFCZS30UP1Y	C	20	1
CFCZS30UP2Y	C	20	2
CFCZS30UP3Y	C	20	3
CFCZS30UP4Y	C	20	4

ZS30up LUCIDANTE / ZS30up POLISHING

CODE	TYPE	Ø min	POSISTION
CFHZS30UP5	L	20	5
CFHZS30UP6	L	20	6
CFHZS30UP7	L	20	7


ZS30down GRANITO / ZS30down r3 GRANITO

CODE	TYPE	Ø min	POSISTION
CFCZS30DP1	C	20	1
CFCZS30DP2	C	20	2
CFCZS30DP3	C	20	3
CFCZS30DP4	C	20	4

ZS30down MATERIALI DURI / ZS30down r3 HARD MATERIALS

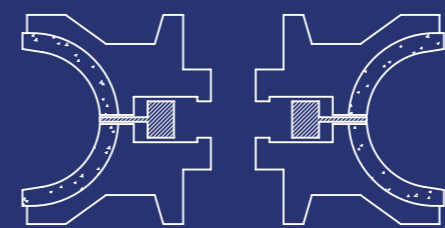
CODE	TYPE	Ø min	POSISTION
CFCZS30DP1Q	C	20	1
CFCZS30DP2Q	C	20	2
CFCZS30DP3Q	C	20	3
CFCZS30DP4Q	C	20	4

ZS30down MATERIALI TECNICI / ZS30down r3 TECHNICAL MATERIALS

CODE	TYPE	Ø min	POSISTION
CFCZS30DP1Y	C	20	1
CFCZS30DP2Y	C	20	2
CFCZS30DP3Y	C	20	3
CFCZS30DP4Y	C	20	4

ZS30down LUCIDANTE / ZS30down POLISHING

CODE	TYPE	Ø min	POSISTION
CFHZS30DP5	L	20	5
CFHZS30DP6	L	20	6
CFHZS30DP7	L	20	7



5 / UTENSILI MACCHINE MANUALI

HAND
MACHINE
TOOLS

GR Granito
Granite

MT Materiali Tecnici
Technical Materials

MR Marmo
Marble

K Ceramica
Ceramic

S Arenaria
Sandstone

V Vetro - Stoneglass
Glass - Stoneglass

Q Quarzo Naturale
Natural Quartz

5.1



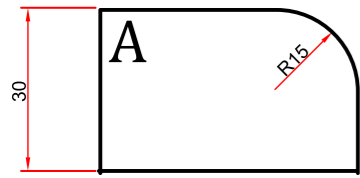
SINTERIZZATE
SINTERED



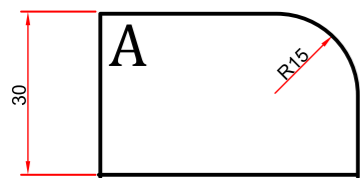
A20 R10 TIPO BLU / BLUE A20 R10		
CODE	TYPE	POSISTION
MMA20R10P1G	SEGMENTED	1
MMA20R10P2G	SEGMENTED / CONTINUOUS RIM	2
MMA20R10P3G	SEGMENTED / CONTINUOUS RIM	3
MMA20R10P4G	SEGMENTED / CONTINUOUS RIM	4



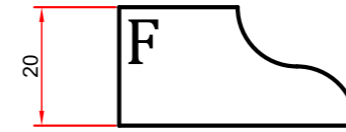
A20 R10 TIPO NERO / BLACK A20 R10		
CODE	TYPE	POSISTION
MMA20R10P1Q	SEGMENTED	1
MMA20R10P2Q	SEGMENTED / CONTINUOUS RIM	2
MMA20R10P3Q	SEGMENTED / CONTINUOUS RIM	3
MMA20R10P4Q	SEGMENTED / CONTINUOUS RIM	4



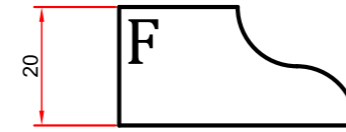
A30 R15 TIPO BLU / BLUE A30 R15		
CODE	TYPE	POSISTION
MMA30R15P1G	SEGMENTED	1
MMA30R15P2G	SEGMENTED / CONTINUOUS RIM	2
MMA30R15P3G	SEGMENTED / CONTINUOUS RIM	3
MMA30R15P4G	SEGMENTED / CONTINUOUS RIM	4



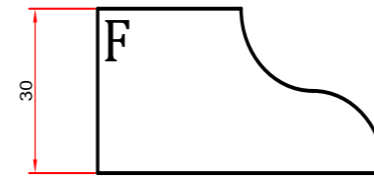
A30 R15 TIPO NERO / BLACK A30 R15		
CODE	TYPE	POSISTION
MMA30R15P1Q	SEGMENTED	1
MMA30R15P2Q	SEGMENTED / CONTINUOUS RIM	2
MMA30R15P3Q	SEGMENTED / CONTINUOUS RIM	3
MMA30R15P4Q	SEGMENTED / CONTINUOUS RIM	4



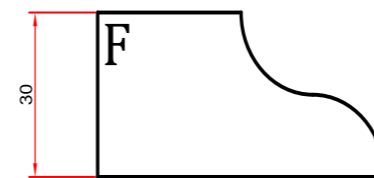
F20 R10 TIPO BLU / BLUE F20 R10		
CODE	TYPE	POSISTION
MMF20R10P1G	SEGMENTED	1
MMF20R10P2G	SEGMENTED / CONTINUOUS RIM	2
MMF20R10P3G	SEGMENTED / CONTINUOUS RIM	3
MMF20R10P4G	SEGMENTED / CONTINUOUS RIM	4



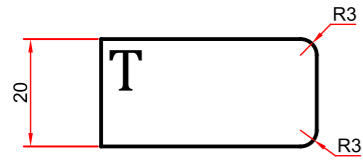
F20 R10 TIPO NERO / BLACK F20 R10		
CODE	TYPE	POSISTION
MMF20R10P1Q	SEGMENTED	1
MMF20R10P2Q	SEGMENTED / CONTINUOUS RIM	2
MMF20R10P3Q	SEGMENTED / CONTINUOUS RIM	3
MMF20R10P4Q	SEGMENTED / CONTINUOUS RIM	4



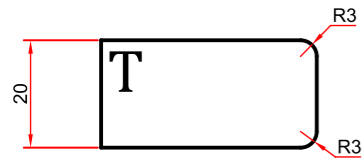
F30 R15 TIPO BLU / BLUE A30 F15		
CODE	TYPE	POSISTION
MMF30R15P1G	SEGMENTED	1
MMF30R15P2G	SEGMENTED / CONTINUOUS RIM	2
MMF30R15P3G	SEGMENTED / CONTINUOUS RIM	3
MMF30R15P4G	SEGMENTED / CONTINUOUS RIM	4



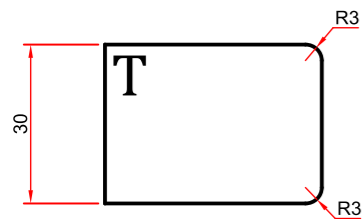
F30 R15 TIPO NERO / BLACK F30 R15		
CODE	TYPE	POSISTION
MMF30R15P1Q	SEGMENTED	1
MMF30R15P2Q	SEGMENTED / CONTINUOUS RIM	2
MMF30R15P3Q	SEGMENTED / CONTINUOUS RIM	3
MMF30R15P4Q	SEGMENTED / CONTINUOUS RIM	4



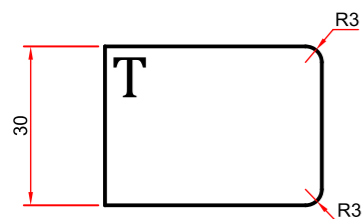
T20 R3 TIPO BLU / BLUE T20 R3		
CODE	TYPE	POSISTION
MMT20R3P1G	SEGMENTED	1
MMT20R3P2G	SEGMENTED / CONTINUOUS RIM	2
MMT20R3P3G	SEGMENTED / CONTINUOUS RIM	3
MMT20R3P4G	SEGMENTED / CONTINUOUS RIM	4



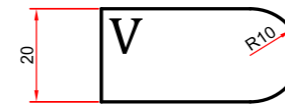
T20 R3 TIPO NERO / BLACK T20 R3		
CODE	TYPE	POSISTION
MMT20R3P1Q	SEGMENTED	1
MMT20R3P2Q	SEGMENTED / CONTINUOUS RIM	2
MMT20R3P3Q	SEGMENTED / CONTINUOUS RIM	3
MMT20R3P4Q	SEGMENTED / CONTINUOUS RIM	4



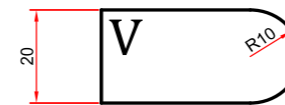
T30 R3 TIPO BLU / BLUE T30 R3		
CODE	TYPE	POSISTION
MMT30R3P1G	SEGMENTED	1
MMT30R3P2G	SEGMENTED / CONTINUOUS RIM	2
MMT30R3P3G	SEGMENTED / CONTINUOUS RIM	3
MMT30R3P4G	SEGMENTED / CONTINUOUS RIM	4



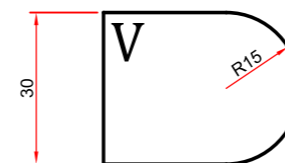
T30 R3 TIPO NERO / BLACK T30 R3		
CODE	TYPE	POSISTION
MMT30R3P1Q	SEGMENTED	1
MMT30R3P2Q	SEGMENTED / CONTINUOUS RIM	2
MMT30R3P3Q	SEGMENTED / CONTINUOUS RIM	3
MMT30R3P4Q	SEGMENTED / CONTINUOUS RIM	4



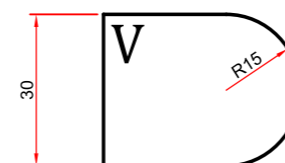
V20 TIPO BLU / BLUE V20		
CODE	TYPE	POSISTION
MMV20P1G	SEGMENTED	1
MMV20P2G	SEGMENTED / CONTINUOUS RIM	2
MMV20P3G	SEGMENTED / CONTINUOUS RIM	3
MMV20P4G	SEGMENTED / CONTINUOUS RIM	4



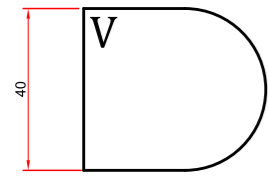
V20 TIPO NERO / BLACK V20		
CODE	TYPE	POSISTION
MMV20P1Q	SEGMENTED / CONTINUOUS RIM	1
MMV20P2Q	SEGMENTED / CONTINUOUS RIM	2
MMV20P3Q	SEGMENTED / CONTINUOUS RIM	3
MMV20P4Q	SEGMENTED / CONTINUOUS RIM	4



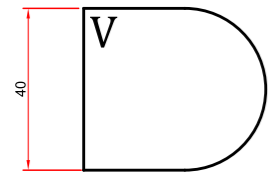
V30 TIPO BLU / BLUE V30		
CODE	TYPE	POSISTION
MMV30P1G	SEGMENTED	1
MMV30P2G	SEGMENTED / CONTINUOUS RIM	2
MMV30P3G	SEGMENTED / CONTINUOUS RIM	3
MMV30P4G	SEGMENTED / CONTINUOUS RIM	4



V30 TIPO NERO / BLACK V30		
CODE	TYPE	POSISTION
MMV30P1Q	SEGMENTED	1
MMV30P2Q	SEGMENTED / CONTINUOUS RIM	2
MMV30P3Q	SEGMENTED / CONTINUOUS RIM	3
MMV30P4Q	SEGMENTED / CONTINUOUS RIM	4


V40 TIPO BLU / BLUE V40

CODE	TYPE	POSISTION
MMV40P1G	SEGMENTED	1
MMV40P2G	SEGMENTED / CONTINUOUS RIM	2
MMV40P3G	SEGMENTED / CONTINUOUS RIM	3
MMV40P4G	SEGMENTED / CONTINUOUS RIM	4


V40 TIPO NERO / BLACK V40

CODE	TYPE	POSISTION
MMV40P1Q	SEGMENTED	1
MMV40P2Q	SEGMENTED / CONTINUOUS RIM	2
MMV40P3Q	SEGMENTED / CONTINUOUS RIM	3
MMV40P4Q	SEGMENTED / CONTINUOUS RIM	4

5.2



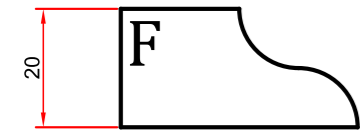
ELETTRODEPOSTE
ELECTROPLATED



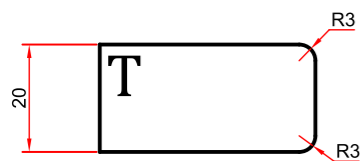
A20 R10		
CODE	TYPE	POSITION
MMEA20R10P1	MILLED	1
MMEA20R10P2	CONTINUOUS RIM	2
MMEA20R10P3	CONTINUOUS RIM	3
MMEA20R10P4	CONTINUOUS RIM	4



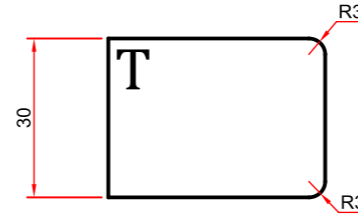
A30 R15		
CODE	TYPE	POSITION
MMEA30R15P1	MILLED	1
MMEA30R15P2	CONTINUOUS RIM	2
MMEA30R15P3	CONTINUOUS RIM	3
MMEA30R15P4	CONTINUOUS RIM	4



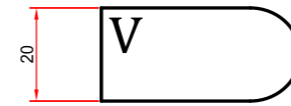
F20 R10		
CODE	TYPE	POSITION
MMEF20R10P1	MILLED	1
MMEF20R10P2	CONTINUOUS RIM	2
MMEF20R10P3	CONTINUOUS RIM	3
MMEF20R10P4	CONTINUOUS RIM	4



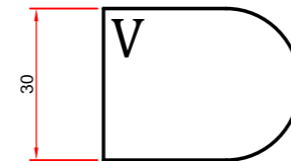
T20 R3		
CODE	TYPE	POSITION
MMET20R3P1	MILLED	1
MMET20R3P2	CONTINUOUS RIM	2
MMET20R3P3	CONTINUOUS RIM	3
MMET20R3P4	CONTINUOUS RIM	4



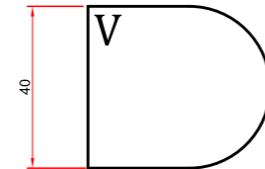
T30 R3		
CODE	TYPE	POSITION
MMET30R3P1	MILLED	1
MMET30R3P2	CONTINUOUS RIM	2
MMET30R3P3	CONTINUOUS RIM	3
MMET30R3P4	CONTINUOUS RIM	4



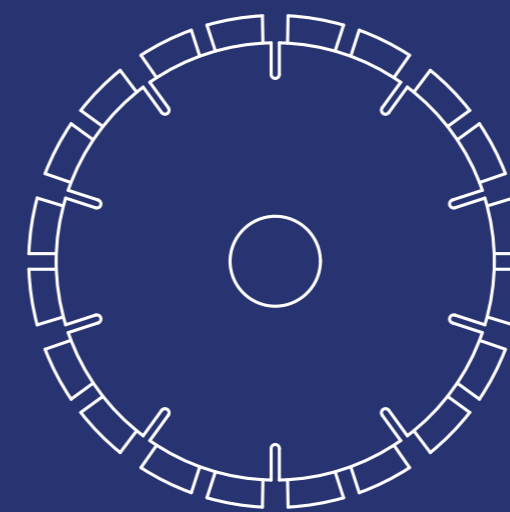
V20		
CODE	TYPE	POSITION
MMEV20P1	MILLED	1
MMEV20P2	CONTINUOUS RIM	2
MMEV20P3	CONTINUOUS RIM	3
MMEV20P4	CONTINUOUS RIM	4



V30		
CODE	TYPE	POSITION
MMEV30P1	MILLED	1
MMEV30P2	CONTINUOUS RIM	2
MMEV30P3	CONTINUOUS RIM	3
MMEV30P4	CONTINUOUS RIM	4

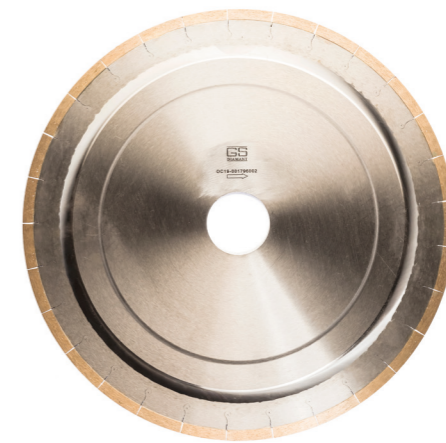


V40		
CODE	TYPE	POSITION
MMEV40P1	MILLED	1
MMEV40P2	CONTINUOUS RIM	2
MMEV40P3	CONTINUOUS RIM	3
MMEV40P4	CONTINUOUS RIM	4



6 / DISCHI
BLADES

6.1



SINTERIZZATO
SINTERED


**DISCO SINTERIZZATO GRANITO ANIMA NORMALE /
SEGMENTED GRANITE BLADE NORMAL CORE**

CODE	DIMENSIONS	PARAMETERS
DGN350T150	Ø350 BORE 60 – Z21 H12	Vp 32/35 classe 1/2/3 Vp 26/30 classe 4/5
DGN400T150	Ø400 BORE 60 – Z24 H12	
DGN450T150	Ø450 BORE 60 – Z26 H12	
DGN500T150	Ø500 BORE 60 – Z30 H12	
DGN625T150	Ø625 BORE 60 – Z36 H12	
DGN725T150	Ø725 BORE 60 – Z40 H12	
DGN825T150	Ø825 BORE 60 – Z46 H12	
DGN900T150	Ø900 BORE 80 – Z64 H15	
DGN1000T150	Ø1000 BORE 80 – Z70 H15	
DGN1200T150	Ø1200 BORE 80 – Z80 H15	


**DISCO SINTERIZZATO GRANITO ANIMA SILENZIATA /
SEGMENTED GRANITE BLADE SILENT CORE**

CODE	DIMENSIONS	PARAMETERS
DGN350T150	Ø350 BORE 60 – Z21 H12	Vp 32/35 classe 1/2/3 Vp 26/30 classe 4/5
DGN400T150	Ø400 BORE 60 – Z24 H12	
DGN450T150	Ø450 BORE 60 – Z26 H12	
DGN500T150	Ø500 BORE 60 – Z30 H12	
DGN625T150	Ø625 BORE 60 – Z36 H12	
DGN725T150	Ø725 BORE 60 – Z40 H12	
DGN825T150	Ø825 BORE 60 – Z46 H12	
DGN900T150	Ø900 BORE 80 – Z64 H15	
DGN1000T150	Ø1000 BORE 80 – Z70 H15	
DGN1200T150	Ø1200 BORE 80 – Z80 H15	


**DISCO SINTERIZZATO GRANITI DURI E MATERIALI DURI ANIMA NORMALE /
SEGMENTED HARD GRANITE AND HARD MATERIALS BLADE NORMAL CORE**

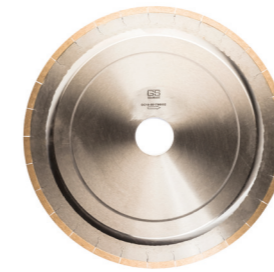
CODE	DIMENSIONS	PARAMETERS
DGN350T130	Ø350 BORE 60 – Z21 H12	Vp 32/35 classe 1/2/3 Vp 26/30 classe 4/5
DGN400T130	Ø400 BORE 60 – Z24 H12	
DGN450T130	Ø450 BORE 60 – Z26 H12	
DGN500T130	Ø500 BORE 60 – Z30 H12	
DGN625T130	Ø625 BORE 60 – Z36 H12	
DGN725T130	Ø725 BORE 60 – Z40 H12	
DGN825T130	Ø825 BORE 60 – Z46 H12	
DGN900T130	Ø900 BORE 80 – Z64 H15	
DGN1000T130	Ø1000 BORE 80 – Z70 H15	
DGN1200T130	Ø1200 BORE 80 – Z80 H15	


**DISCO SINTERIZZATO GRANITI DURI E MATERIALI DURI ANIMA SILENZIATA /
SEGMENTED HARD GRANITE AND HARD MATERIALS BLADE SILENT CORE**

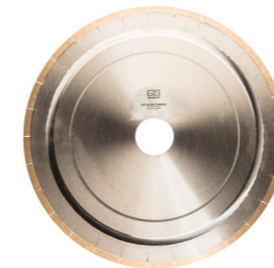
CODE	DIMENSIONS	PARAMETERS
DGS350T130	Ø350 BORE 60 – Z21 H12	Vp 32/35 classe 1/2/3 Vp 26/30 classe 4/5
DGS400T130	Ø400 BORE 60 – Z24 H12	
DGS450T130	Ø450 BORE 60 – Z26 H12	
DGS500T130	Ø500 BORE 60 – Z30 H12	
DGS625T130	Ø625 BORE 60 – Z36 H12	
DGS725T130	Ø725 BORE 60 – Z40 H12	
DGS825T130	Ø825 BORE 60 – Z46 H12	
DGS900T130	Ø900 BORE 80 – Z64 H15	
DGS1000T130	Ø1000 BORE 80 – Z70 H15	
DGS1200T130	Ø1200 BORE 80 – Z80 H15	


**DISCO SINTERIZZATO MARMO ANIMA NORMALE /
SEGMENTED MARBLE BLADE NORMAL CORE**

CODE	DIMENSIONS	PARAMETERS
DMN350T16	Ø350 N°25 SEGMENTS 40 x 3,3 x 7h	Vp 45/55 marmo Vp 45/60 sandstone
DMN400T16	Ø400 N°28 SEGMENTS 40 x 3,3 x 7h	
DMN450T16	Ø450 N°32 SEGMENTS 40 x 4,4 x 7h	
DMN500T16	Ø500 N°36 SEGMENTS 40 x 4,4 x 7h	
DMN625T16	Ø625 N°42 SEGMENTS 40 x 5,5 x 7h	
DMN725T16	Ø725 N°50 SEGMENTS 40 x 6,2 x 7h	
DMN825T16	Ø825 N°46 SEGMENTS 40 x 6,5 x 7h	
DMN900T16	Ø900 N°64 SEGMENTS 24 x 7,5 x 7h	
DMN1000T16	Ø1000 N°70 SEGMENTS 24 x 8 x 7h	
DMN1200T16	Ø1200 N°80 SEGMENTS 24 x 8,5 x 7h	


**DISCO SINTERIZZATO MATERIALI TECNICI ANIMA NORMALE /
SEGMENTED TECH. MATERIALS BLADE NORMAL CORE**

CODE	DIMENSIONS	PARAMETERS
DYN350Z25	Ø350 N° 25 SEGMENTS 44 x 3 x 10h	RPM 1800-2200 FEED IN/OUT 400-500 mm/min FEED CUT 1600/1800 mm/min
DYN400Z29	Ø400 N° 29 SEGMENTS 44 x 3 x 10h	


**DISCO SINTERIZZATO EVO ANIMA NORMALE /
SEGMENTED EVO BLADE NORMAL CORE**

CODE	DIMENSIONS	PARAMETERS
DDN350Z25	Ø350 N° 25 SEGMENTS 44 x 3 x 10h	RPM 1800-2200 FEED IN/OUT 300-400 mm/min FEED CUT 600/800 mm/min
DDN400Z29	Ø400 N° 29 SEGMENTS 44 x 3 x 10h	


**DISCO SINTERIZZATO MARMO ANIMA SILENZIATA /
SEGMENTED MARBLE BLADE SILENT CORE**

CODE	DIMENSIONS	PARAMETERS
DMS350T16	Ø350 N°25 SEGMENTS 40 x 3,3 x 7h	Vp 45/55 marmo Vp 45/60 sandstone
DMS400T16	Ø400 N°28 SEGMENTS 40 x 3,3 x 7h	
DMS450T16	Ø450 N°32 SEGMENTS 40 x 4,4 x 7h	
DMS500T16	Ø500 N°36 SEGMENTS 40 x 4,4 x 7h	
DMS625T16	Ø625 N°42 SEGMENTS 40 x 5,5 x 7h	
DMS725T16	Ø725 N°50 SEGMENTS 40 x 6,2 x 7h	
DMS825T16	Ø825 N°46 SEGMENTS 40 x 6,5 x 7h	
DMS900T16	Ø900 N°64 SEGMENTS 24 x 7,5 x 7h	
DMS1000T16	Ø1000 N°70 SEGMENTS 24 x 8 x 7h	
DMS1200T16	Ø1200 N°80 SEGMENTS 24 x 8,5 x 7h	

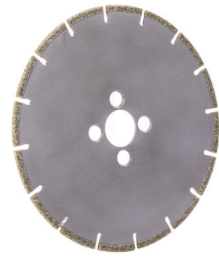

DISCO DA FLESSIBILE PER GRANITO / GRANITE FLEX BLADE BORE

CODE	DIMENSIONS	PARAMETERS
DFG115	Ø115 BORE 22,2	
DFG115M14	Ø115 FLANGE M14	
DFG125	Ø125 BORE 22,2	
DFG125M14	Ø125 FLANGE M14	
DFG150	Ø150 BORE 22,2	
DFG150M14	Ø150 FLANGE M14	
DFG180	Ø180 BORE 22,2	
DFG180M14	Ø180 FLANGE M14	
DFG230	Ø230 FLANGE 22,2	
DFG230M14	Ø230 FLANGE M14	

6.2

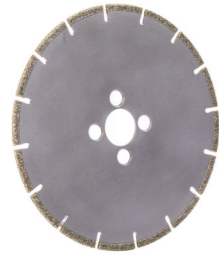


ELETTRODEPOSTI
ELECTROPLATED



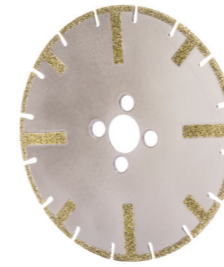
DISCO ELETTRORDEPOSTO ANIMA NORMALE /
ELECTROPLATED BLADE NORMAL CORE

CODE	DIMENSIONS	PARAMETERS
DGE341	Ø341 x 3,2 BORE 60	
DGE391	Ø391 x 3,5 BORE 60	
DGE491	Ø491 x 3,8 BORE 60	
DGE611	Ø611 x 4,5 BORE 60	



DISCO ELETTRORDEPOSTO DA TAGLIO PER FLEX /
ELECTROPLATED FLEX CUTTING BLADE

CODE	DIMENSIONS	PARAMETERS
DFE115	Ø115 BORE 22,2	
DFE115M14	Ø115 FLANGE M14	
DFE125	Ø125 BORE 22,2	
DFE125M14	Ø125 FLANGE M14	
DFE150	Ø150 BORE 22,2	
DFE150M14	Ø150 FLANGE M14	
DFE180	Ø180 BORE 22,2	
DFE180M14	Ø180 FLANGE M14	
DFE230	Ø230 FLANGE 22,2	
DFE230M14	Ø230 FLANGE M14	



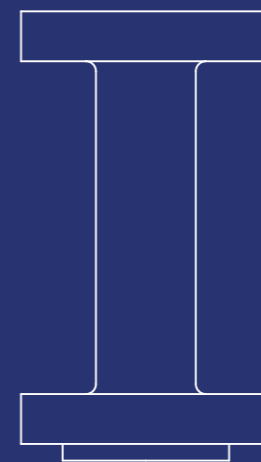
DISCO ELETTRORDEPOSTO DA TAGLIO PER FLEX CON RINFROZI /
ELECTROPLATED REINFORCED FLEX CUTTING BLADE

CODE	DIMENSIONS	PARAMETERS
DFER115	Ø115 BORE 22,2	
DFER115M14	Ø115 FLANGE M14	
DFER125	Ø125 BORE 22,2	
DFER125M14	Ø125 FLANGE M14	
DFER150	Ø150 BORE 22,2	
DFER150M14	Ø150 FLANGE M14	
DFER180	Ø180 BORE 22,2	
DFER180M14	Ø180 FLANGE M14	
DFER230	Ø230 FLANGE 22,2	
DFER230M14	Ø230 FLANGE M14	



DISCO ELETTRORDEPOSTO TIPO VIAREGGIO /
ELECTROPLATED VIAREGGIO TYPE BLADE

CODE	DIMENSIONS	PARAMETERS
DFEV125	Ø115 BORE 22,2	
DFEV125M14	Ø115 FLANGE M14	
DFEV130	Ø130 BORE 22,2	
DFEV130M14	Ø130 FLANGE M14	



7 / CONI E PROLUNGHE

Prolunghe in acciaio per macchine a controllo
numerico

CONES AND EXTENSIONS

*Stainless steel extension for numeric control
machines*


CONI ISO 40 PORTA MOLE / WHEEL HOLDER ISO 40 CONES

CODE	DIMENSIONS	CONNECTION
CPM40IN....	Ø22 L=34/39/47/80 Ø35 L=34/39/47/80	INTERMAC NORTHWOOD EMMEDUE
CPM40BT...	Ø22 L=34/39/47/80 Ø35 L=34/39/47/80	DENVER HELIOS THIBAUT PARK IND.
CPM40CM....	Ø22 L=34/39/47/80 Ø35 L=34/39/47/80	CMS BREMBANA
CPM40BV...	Ø22 L=34/39/47/80 Ø35 L=34/39/47/80	BAVELLONI
CPM40HS...	Ø22 L=32/39/47/80 Ø35 L=34/39/47/80	BRETON

CONI ISO 40 ½ GAS FEMMINA / ½ GAS FEMALE ISO 40 CONES

CODE	DIMENSIONS	CONNECTION
CMG40IN....	L = 0 mm	INTERMAC NORTHWOOD EMMEDUE
CMG40BT...	L = 13 mm	DENVER HELIOS THIBAUT PARK IND.
CMG40CM....	L = 50/62 mm	CMS BREMBANA
CMG40BV....	L = 10/25/50 mm	BAVELLONI
CMG40HS...	L = 44 mm	BRETON

CONI ISO 40 ATTACCO FLANGIA / FLANGE CONNECTION ISO 40 CONES

CODE	DIMENSIONS	CONNECTION
CFL40IN....	L = 5/75 mm	INTERMAC NORTHWOOD EMMEDUE
CFL40BT...	L = 28/35/75 mm	DENVER HELIOS THIBAUT PARK IND.
CFL40CM....	L = 35/75 mm	CMS BREMBANA
CFL40BV....	L = 35/75 mm	BAVELLONI
CFL40HS...	L = 35/75 mm	BRETON

CONI ISO 50 ½ GAS FEMMINA / ½ GAS FEMALE ISO 50 CONES

CODE	DIMENSIONS	CONNECTION
CMG50M....	L = 80/120/200 mm	OMAG
CMG50DO....	L = 100/200 mm	DONATONI

CONI ISO 50 ATTACCO FLANGIA / FLANGE CONNECTION ISO 50 CONES

CODE	DIMENSIONS	CONNECTION
CMG50M....	L = 35/75 mm	OMAG
CMG50DO....	L = 35/75 mm	DONATONI



ATTACCO FLANGIA - FLANGIA INOX /
TAINLESS STEEL FLANGE - FLANGE CONNECTION

CODE	DIMENSIONS	CONNECTION
PFF100	Hut 100	3+3 HOLES BORE 50
PFF200	Hut 200	
PFF300	Hut 300	
PFF400	Hut 400	



ATTACCO FLANGIA - FLANGIA PICCOLA INOX /
STAINLESS STEEL FLANGE - SMALL FLANGE CONNECTION

CODE	DIMENSIONS	CONNECTION
PFFP1002H20	Hut 100	2+2 HOLES BORE 20
PFFP2002H20	Hut 200	
PFFP3002H20	Hut 300	
PFFP4002H20	Hut 400	
PFFP1002H10	Hut 100	2+2 HOLES BORE 10
PFFP2002H10	Hut 200	
PFFP3002H10	Hut 300	
PFFP4002H10	Hut 400	
PFFP1003H10	Hut 100	3+3 HOLES BORE 10
PFFP2003H10	Hut 200	
PFFP3003H10	Hut 300	
PFFP4003H10	Hut 400	
PFFP1003H14	Hut 100	3+3 HOLES BORE 14
PFFP2003H14	Hut 200	
PFFP3003H14	Hut 300	
PFFP4003H14	Hut 400	



ATTACCO FLANGIA - 1/2 GAS FEMMINA INOX /
STAINLESS STEEL FLANGE - 1/2 GAS FEMALE CONNECTION

CODE	DIMENSIONS	CONNECTION
PFMG100	Hut 100	3+3 HOLES BORE 50
PFMG200	Hut 200	
PFMG300	Hut 300	



ATTACCO 1/2 GAS - 1/2 GAS FEMMINA INOX /
STAINLESS STEEL 1/2 GAS - 1/2 GAS FEMALE CONNECTION

CODE	DIMENSIONS	CONNECTION
PMGMG100	Hut 100	1/2 GAS
PMGMG150	Hut 150	
PMGMG200	Hut 200	



ATTACCO 1/2 GAS - FLANGIA INOX /
STAINLESS STEEL 1/2 GAS - FLANGE CONNECTION

CODE	DIMENSIONS	CONNECTION
PMGF50	Hut 50	1/2 GAS
PMGF100	Hut 100	
PMGF150	Hut 150	



ATTACCO ½ GAS – FLANGIA PICCOLA INOX /
STAINLESS STEEL ½ GAS – SMALL FLANGE CONNECTION

CODE	DIMENSIONS	CONNECTION
PMGFP502H20	Hut 50	½ GAS - 2+2 BORE 20
PMGFP1002H20	Hut 100	
PMGFP1502H20	Hut 150	
PMGFP502H10	Hut 50	½ GAS - 2+2 BORE 10
PMGFP1002H10	Hut 100	
PMGFP1502H10	Hut 150	
PMGFP503H10	Hut 50	½ GAS - 3+3 BORE 10
PMGFP1003H10	Hut 100	
PMGFP1503H10	Hut 150	
PMGFP503H14	Hut 50	½ GAS - 3+3 BORE 14
PMGFP1003H14	Hut 100	
PMGFP1503H14	Hut 150	



ATTACCO ½ GAS – M... FEMMINA INOX /
STAINLESS STEEL ½ GAS – M... FEMALE CONNECTION

CODE	DIMENSIONS	CONNECTION
PMGM101850	Ø18 Hut 50	½ GAS - M10 FEMALE
PMGM101870	Ø18 Hut 70	
PMGM1018100	Ø18 Hut 100	
PMGM1018120	Ø18 Hut 120	
PMGM121850	Ø18 Hut 50	½ GAS - M12 FEMALE
PMGM121870	Ø18 Hut 70	
PMGM1218100	Ø18 Hut 100	
PMGM1218120	Ø18 Hut 120	
PMGM141850	Ø18 Hut 50	½ GAS - M14 FEMALE
PMGM141870	Ø18 Hut 70	
PMGM1418100	Ø18 Hut 100	
PMGM1418120	Ø18 Hut 120	



PORTAPUNTE COMPLETO INOX ATTACCO ½ GAS /
STAINLESS STEEL COMPLETE POINTHOLDER ½ GAS CONNECTION

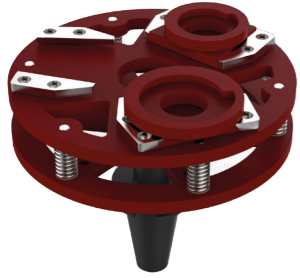
CODE	DIMENSIONS	CONNECTION
PPC3ER16	PINZA Ø3	ER16
PPC6ER16	PINZA Ø6	
PPC8ER16	PINZA Ø8	
PPC10ER16	PINZA Ø10	ER20
PPC6ER20	PINZA Ø6	
PPC8ER20	PINZA Ø8	
PPC10ER20	PINZA Ø10	

PINZA PER PORTAPUNTE INOX ATTACCO ½ GAS /
PLIER FOR STAINLESS STEEL POINTHOLDER ½ GAS CONNECTION

CODE	DIMENSIONS	CONNECTION
PPP3ER16	PINZA Ø3	ER16
PPP6ER16	PINZA Ø6	
PPP8ER16	PINZA Ø8	
PPP10ER16	PINZA Ø10	
PPP6ER20	PINZA Ø6	ER20
PPP8ER20	PINZA Ø8	
PPP10ER20	PINZA Ø10	

GHIERA PER PORTAPUNTE INOX ATTACCO ½ GAS /
LOCKING RING FOR STAINLESS STEEL POINTHOLDER ½ GAS CONNECTION

CODE	DIMENSIONS	CONNECTION
GPP3ER16	PINZA Ø3	ER16
GPP6ER16	PINZA Ø6	
GPP8ER16	PINZA Ø8	
GPP10ER16	PINZA Ø10	ER20
GPP6ER20	PINZA Ø6	
GPP8ER20	PINZA Ø8	
GPP10ER20	PINZA Ø10	

**CONO AMMORTIZZATO / CUSHIONED CONE**

CODE	OPTIONS
CPAMM....	CONO AMMORTIZZATO CON ATTACCHI FRANKFURT CONO AMMORTIZZATO CON ATTACCHI FRANKFURT E CHIOCCIOLA

8 / LUCIDATURA

Frankfurt, fikert, virgole, piatti satellitari e anelli calibratori per la calibratura e la lucidatura di lastre e marmette di marmo e granito.

POLISHING

Frankfurt, fikert, floating point, satellite plate and calibrating rings for the calibration and polishing marble and granite slabs and tiles. Tools form marble, granite, ceramic materials, natural stone and composite materials


MOLA SATELLITARE PER GRANITO / SATELLITE WHEEL FOR GRANITE

CODE	DIMENSION	POSISTION
SAT150Z15P1	Ø150 M45 Z15	1
SAT150Z15P2	Ø150 M45 Z15	2


FIKERT DIAMANTATO METALLICO PER GRANITO / DIAMOND METALLIC FIKERT FOR GRANITE

CODE	DIMENSION	POSISTION
FKRTP1G9	L130	1
FKRTP2G10	L130	2
FKRTP2G12	L130	3
FKRTP2G13	L130	4


FIKERT DIAMANTATO RESINOIDE PER GRANITO / RESIN DIAMOND FIKERT FOR GRANITE

CODE	DIMENSION	GRANA
FKRTRES.....	L140	36 → 1800


FRANKFURT DIAMANTATO METALLICO TIPO CITROEN PER MARMO / DIAMOND METALLIC FRANKFURT CITROEN TYPE FOR MARBLE

CODE	DIMENSION	POSISTION
FRCITP1G6	2 SEG. x 100mm	1
FRCITP1G9		2
FRCITP1G11		3
FRCITP1G14		4


FRANKFURT DIAMANTATO METALLICO A SETTORI PER MARMO / DIAMOND METALLIC FRANKFURT SEGMENTED FOR MARBLE

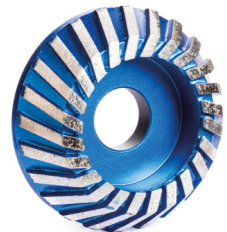
CODE	DIMENSION	POSISTION
FR8SP1G6	8 SEGMENTS	1
FR8SP1G9		2
FR8SP1G11		3
FR8SP1G14		4


FRANKFURT RESINOIDE PER MARMO / RESIN DIAMOND FRANKFURT FOR MARBLE

CODE	GRANA
FRRES.....	46 → 6000


VIRGOLA DIAMANTATA PER CEMENTO / DIAMOND VIRGOLA FOR CEMENT

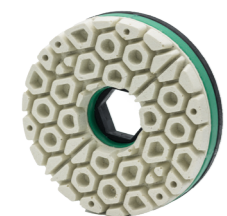
CODE	DIMENSION	POSISTION
VRGP1Z5		1
VRGP2Z5	5 SEGMENTS	2
VRGP3Z5		3


MOLA PRE-TAGLIO PER LUCIDACOSTE / PRE-CUT WHEEL FOR EDGE POLISHING MACHINE

CODE	DIMENSION	POSISTION
MLPT130	Ø130	SEGUIRE LE INDICAZIONI DEL COSTRUTTORE DELLA MACCHINA
MLPT150	Ø150	


MOLA GENERATRICE PER LUCIDACOSTE / GENERATING WHEEL FOR EDGE POLISHING MACHINE

CODE	DIMENSION	POSISTION
MLGEN130	Ø130	SEGUIRE LE INDICAZIONI DEL COSTRUTTORE DELLA MACCHINA
MLGEN150	Ø150	


MOLA RESINOIDE PER LUCIDACOSTE / RESIN DIAMOND EDGE POLISHING WHEEL

CODE	DIMENSION	POSISTION
MLRES	Ø130	60 → 3000
	Ø150	

9 / FILI WIRES



FILO SINTERIZZATO PLASTIFICATO PER GRANITO ANELLO CHIUSO /
CLOSE RING SINTERED PLASTIFIED WIRE FOR GRANITE



CODE	DIMENSIONS
WSPACG...	Ø 11 / 8,5 / 6,3

FILO SINTERIZZATO PLASTIFICATO PER GRANITO ANELLO APERTO /
OPEN RING SINTERED PLASTIFIED WIRE FOR GRANITE



CODE	DIMENSIONS
WSPAAG...	Ø 11 / 8,5 / 6,3

FILO SINTERIZZATO PLASTIFICATO PER MARMO ANELLO CHIUSO /
CLOSE RING SINTERED PLASTIFIED WIRE FOR MARBLE



CODE	DIMENSIONS
WSPACM...	Ø 11 / 8,5 / 6,3

FILO SINTERIZZATO PLASTIFICATO PER MARMO ANELLO APERTO /
OPEN RING SINTERED PLASTIFIED WIRE FOR MARBLE



CODE	DIMENSIONS
WSPAAM...	Ø 11 / 8,5 / 6,3

FILO ELETTRODEPOSTO PLASTIFICATO PER MARMO ANELLO CHIUSO /
ELECTROPLATED CLOSE RING PLASTIFIED WIRE FOR MARBLE



CODE	DIMENSIONS
WEPACM...	Ø 10 / 8 / 6 / 4

FILO ELETTRODEPOSTO PLASTIFICATO PER MARMO ANELLO APERTO /
ELECTROPLATED OPEN RING PLASTIFIED WIRE FOR MARBLE



CODE	DIMENSIONS
WEPAAM...	Ø 10 / 8 / 6

PERLINA SINTERIZZATA PER GRANITO / SINTERED BEAD FOR GRANITE



CODE	DIMENSIONS
PGR...	Ø 11 / 8,5 / 6,3

PERLINA SINTERIZZATA PER MARMO / SINTERED BEAD FOR MARBLE



CODE	DIMENSIONS
PMR...	Ø 10 / 8 / 6 / 4

PERLINA ELETTRODEPOSTA PER MARMO / ELECTROPLATED BEAD FOR MARBLE



CODE	DIMENSIONS
PEL...	Ø 10 / 8 / 6 / 4

10 / ACCESSORI E SERVIZI

ACCESSORIES AND
SERVICES


PANETTO RAVVIVANTE / SHARPENER BLOCK

CODE	DIMENSIONS
MATRETT	200x100x43 (mm)


VENTOSE / SUCTION CUPS

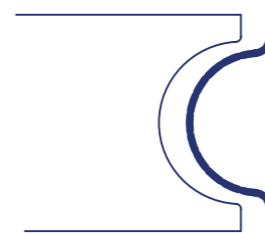
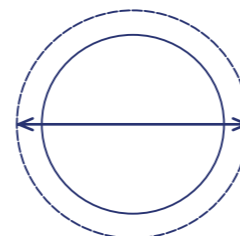
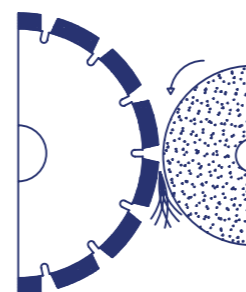
CODE	DIMENSIONS
VENT....	TONDA – QUADRA – RETTANGOLARE – ANGOLARE ROUND – SQUARE – RECTANGULAR – CORNER


MANINA PORTAUTENSILI / TOOL FORK

CODE	DIMENSIONS
MAN...	ISO30 – ISO40 – ISO50


RIDUZIONE ACCIAIO DISCO / STEEL BLADE REDUCTION RING

CODE	DIMENSIONS
RIDUZ6050	Øe 60 Øi 50
RIDUZ6550	Øe 65 Øi 50
RIDUZ7050	Øe 70 Øi 50
RIDUZ8050	Øe 80 Øi 50
RIDUZ6560	Øe 65 Øi 60
RIDUZ7060	Øe 70 Øi 60
RIDUZ8060	Øe 80 Øi 60


RETTIFICA UTENSILI / TOOLS GRINDING

CODE	SPECIFICATIONS
MRETT...	MOLE CNC – MOLE – MOLE MACCHINE MANUALI CNC WHEELS - BRIDGE SAW WHEELS – MANUAL MA- CHINE WHEELS
DRETT...	DISCHI CNC BLADE - BRIDGE SAW BALDES
FORRETT...	FORETTI CNC DRILLS – MANUAL DRILLS
FRRETT...	FRESE CNC ROUTERS

ALLARGAMENTO FORI / HOLES REAMING

CODE	SPECIFICATIONS
ALFOR...	MOLE CNC – MOLE - DISCHI CNC WHEELS - BRIDGE SAW WHEELS – BLADES

ASSISTENZA OFFICINA MECCANICA / MECHANICAL WORKSHOP ASSISTANCE

CODE	SPECIFICATIONS
ASOFF...	TORNITURA – FORATURA – FRESATURA – MONTAGGIO/ SMONTAGGIO TURNING – DRILLING – MILLING – ASSEMBLY/DISAS- SEMBLY

SDIAMANTATURA E RIDIAMANTATURA / DIAMOND REMOVAL AND RE-DRESSING

CODE	SPECIFICATIONS
MDIAM	MOLE CNC – MOLE – MOLE MACCHINE MANUALI CNC WHEELS - BRIDGE SAW WHEELS – MANUAL MA- CHINE WHEELS
DDIAM	DISCHI CNC BLADE - BRIDGE SAW BALDES

**TERMINI E
CONDIZIONI**

**TERMS AND
CONDITIONS**

TERMINI E CONDIZIONI

TERMINI DI PAGAMENTO

- TUTTI I PAGAMENTI dovranno essere fatti con la valuta indicata in fattura.
- Tutte le fatture sono dovute dal momento del ricevimento, salvo diversa indicazione.
- Le fatture in sospeso da oltre 30gg subiranno un rincaro pari al 0,7% di interesse mensile.
- Il pagamento deve essere effettuato tramite Bonifico bancario; le coordinate bancarie sono indicate sulle conferme d'ordine, proforma invoice e fatture.

ORDINI

- Gli ordini possono essere effettuati telefonicamente, via whatsapp o via e-mail ai canali ufficiali o alla figura commerciale di riferimento.
- Gli ordini dei Clienti dovranno saranno accettati da GS Diamant srl mediante l'emissione di una Conferma d'Ordine e secondo le condizioni di vendita pattuite.

SPEDIZIONI

- A meno che una preferenza non sia indicata dal cliente e sia accettata da GS Diamant srl, TUTTE le spedizioni verranno effettuate mediante i nostri corrieri/spedizionieri e addebitate nella fattura di riferimento.
- Se GS Diamant srl non sarà in grado di evadere un intero ordine, verrà effettuata una spedizione parziale, salvo accordi con il cliente che richiederà una "Spedizione Completa".

TRASPORTO

- I clienti devono ispezionare immediatamente la spedizione ricevuta.
- Danni o ammanchi devono essere segnalati immediatamente al corriere e annotati sulla polizza di carico, in alternativa dovranno essere immediatamente segnalati con relativo materiale foto/video a GS Diamant srl.
- GS Diamant dovrà essere informato di eventuali ammanchi non oltre le 24 ore dal ricevimento della spedizione.
- Il trasporto si intende SEMPRE Franco Fabbrica Carrara, salvo accordi o comunicazione accordati da GS Diamant srl .

VARIAZIONE PREZZI

- Prezzi e disponibilità sono soggetti a variazioni senza comunicazione preventiva da parte di GS Diamant srl .
- Tutte le quotazioni ed offerte hanno valenza di 10gg dalla comunicazione stessa.
- GS Diamant srl si riserva il diritto di correggere errori di Prezzo su atutti i media stampati ed elettronici.

RITORNO MERCE E RISARCIMENTI

- La restituzione di un prodotto deve avvenire entro 30 giorni dalla ricezione di quest'ultimo, il prodotto deve essere non utilizzato.
- Gli ordini speciali o i prodotti personalizzati non possono essere restituiti.
- Tutte le restituzioni di materiale devono essere accompagnate da un codice di rientro autorizzato da GS Diamant srl (UR_....).
- Per ricevere un codice di rientro autorizzato contattare il nostro ufficio commerciale all'indirizzo info@gsdiamant.com.
- Gli utensili resi dovranno essere inutilizzati, completi di ogni componente e in condizioni di riutilizzo per poter ricevere il rimborso totale.
- Utensili personalizzati, su misura o con marcature personalizzate non saranno restituibili, eccezion fatta per gli errori di natura produttiva a nostro carico
- In caso di risarcimento, il pagamento da parte di GS Diamant srl avverrà nella stessa forma del pagamento accordata al cliente.
- Gli articoli che possono essere restituiti devono avere il timbro postale entro 30 giorni dalla data della fattura o 45 giorni dalla spedizione. Gli articoli restituiti dopo il periodo di tempo sopra stabilito o in condizioni non rivendibili, inclusa la confezione originale del produttore contrassegnata o danneggiata, non verranno accreditati.
- Una volta ricevuto il codice "UR_..." ; dovrà essere indicato sul pacco o sul documento di trasporto.
- Gli utensili resi senza codice di restituzione saranno soggetti ad un risarcimento pari al 20% del prezzo di vendita.

SPEDIRE A:
GS Diamant srl
ATT.NE RESO UR_....
Via Aurelia,65
54033 Carrara (MS)

TERMS AND CONDITIONS

PAYMENT TERMS

- ALL PAYMENTS must be made in the currency indicated on the invoice.
- All invoices are due upon receipt, unless otherwise stated.
- Invoices pending for more than 30 days will be subject to an increase of 0.7% monthly interest.
- Payment must be made by bank transfer; the bank details are indicated on order confirmations, proforma invoice and invoices.

ORDERS

- Orders can be placed by telephone, via WhatsApp or via e-mail to the official channels or to the relevant commercial figure.
- Customer orders must be accepted by GS Diamant srl by issuing an Order Confirmation and according to the agreed sales conditions.

SHIPPING

- Unless a decoration is indicated by the customer and is accepted by GS Diamant srl, ALL shipments will be made via our couriers/freight forwarders and charged on the relevant invoice.
- If GS Diamant srl is not able to process an entire order, a partial shipment will be made, unless agreed with the customer who will request a "Full Shipment".

TRANSPORT

- Customers should inspect the received shipment immediately.
- Damage or shortages must be reported immediately to the courier and noted on the bill of lading, alternatively they must be immediately reported with the relevant photo/video material to GS Diamant srl.
- GS Diamant must be informed of any shortages no later than 24 hours from receipt of the shipment.
- Transport is ALWAYS ex works Carrara, unless agreements or communications are granted by GS Diamant srl.

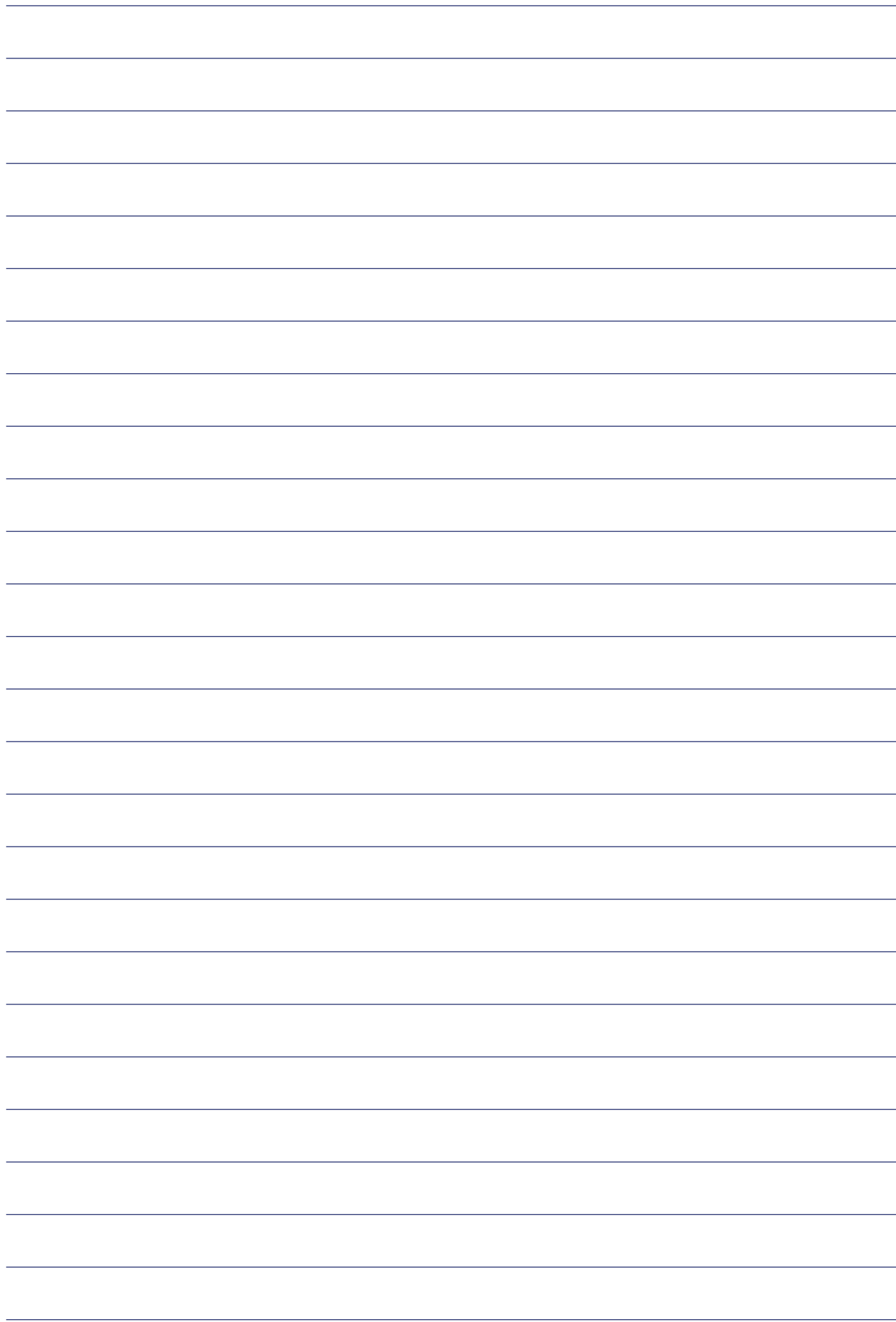
PRICE CHANGE

- Prices and availability are subject to change without prior communication from GS Diamant srl.
- All quotes and offers are valid for 10 days from the communication itself.
- GS Diamant srl reserves the right to correct pricing errors in all printed and electronic media.

RETURN OF GOODS AND COMPENSATIONS

- The return of a product must take place within 30 days of receiving the latter, the product must be unused.
- Special orders or customized products cannot be returned.
- All returns of material must be accompanied by a return code authorized by GS Diamant srl (UR_....).
- To receive an authorized return code, contact our sales department at info@gsdiamant.com.
- The returned tools must be unused, complete with all components and in a reusable condition in order to receive a full refund.
- Personalized tools, made to measure or with personalized markings will not be returnable, except for production errors at our expense
- In case of compensation, the payment by GS Diamant srl will take place in the same form as the payment granted to the customer.
- Items eligible for return must be postmarked within 30 days of the invoice date or 45 days of shipment. Items returned after the time period stated above or in non-resaleable condition, including marked or damaged original manufacturer packaging, will not be credited.
- Once the code "UR_..." has been received; must be indicated on the package or on the transport document.
- Tools returned without a return code will be subject to compensation equal to 20% of the sales price.

SHIP TO:
GS Diamant srl
ATTENTION RETURN UR_....
Via Aurelia,65
54033 Carrara (MS)





GS DIAMANT SRL

Via Aurelia 65 - Loc. Frassina
54033 Carrara (MS) Italy

www.gsdiament.com
info@gsdiament.com
(+39) 0585 832249

